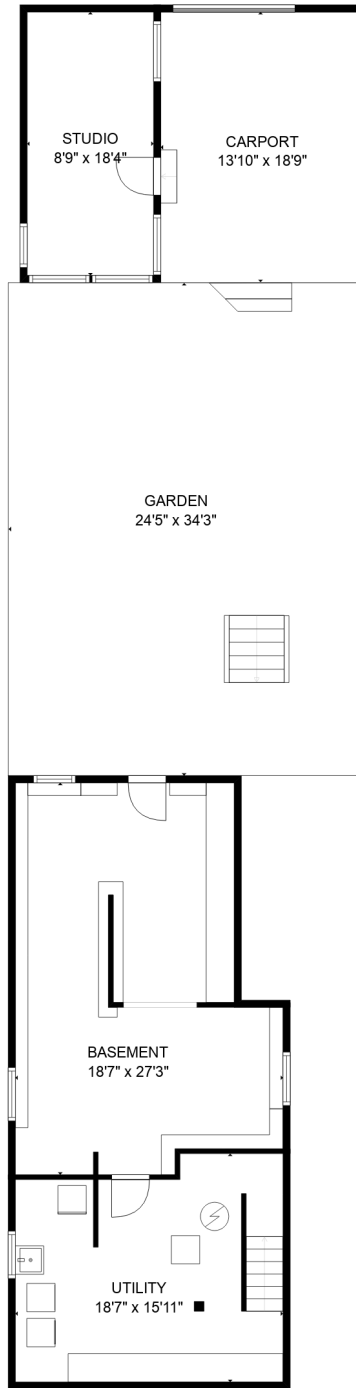


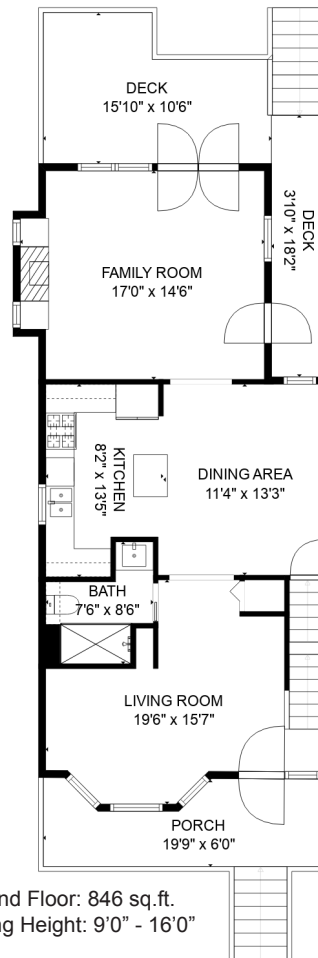


STONEHOUSE
TEAM

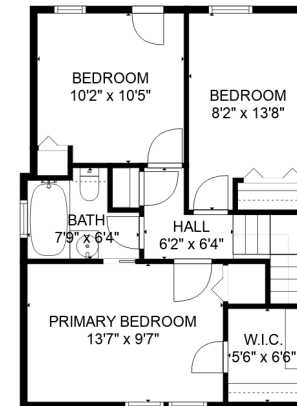
Rick Stonehouse PREC*
Dwayne Launt PREC*
Shaun Gregory PREC*



First Floor: 972 sq.ft.
Ceiling Height: 6'4"



Second Floor: 846 sq.ft.
Ceiling Height: 9'0" - 16'0"



Third Floor: 564 sq.ft.
Ceiling Height: 9'0"

846 Keefer Street
Vancouver, BC

| | |
|--------------------|-------------------|
| First Floor | 972 sqft |
| Second Floor | 846 sqft |
| Third Floor | 564 sqft |
| Living Area | 2,382 sqft |
| Studio | 160 sqft |
| Carport | 268 sqft |
| Garden | 836 sqft |
| Deck | 209 sqft |
| Porch | 102 sqft |



Floor plan is not suitable for architectural/construction purposes.
Sizes and dimensions are approximate, buyer to verify.