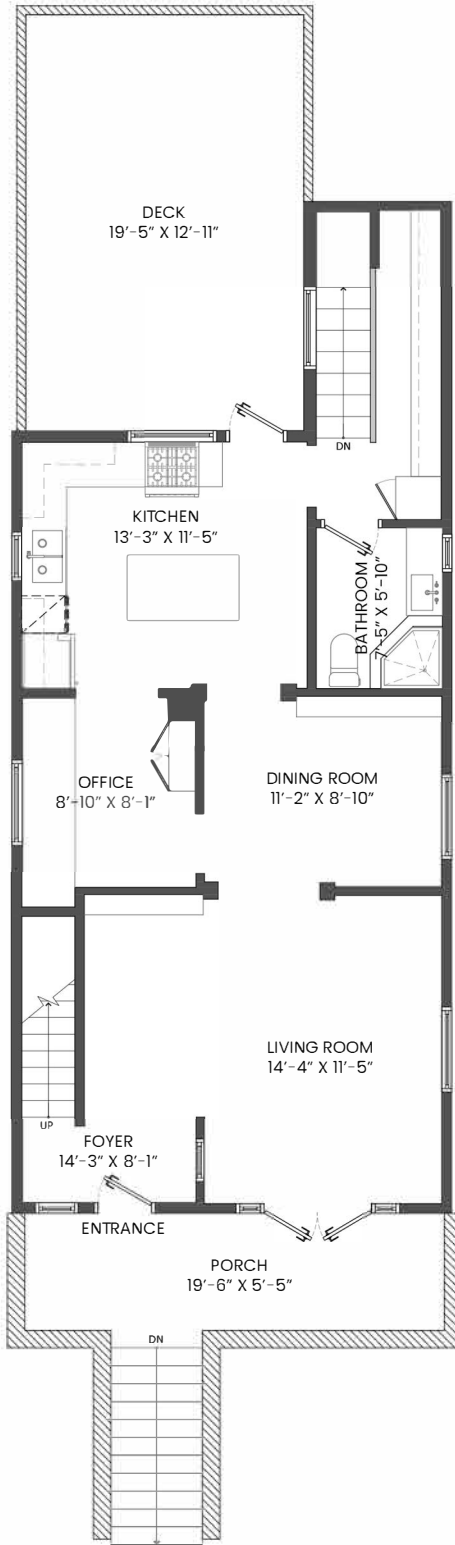


2263 WEST 14TH AVENUE, VANCOUVER, BC

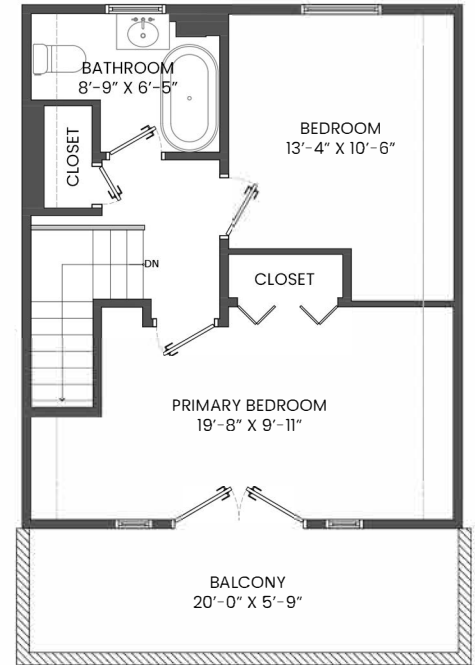
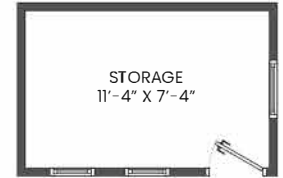
LOWER FLOOR TOTAL: 1,192 SQ.FT. DECK: 250 SQ. FT.
 MAIN FLOOR TOTAL: 818 SQ.FT. BALCONY: 115 SQ. FT.
 UPPER FLOOR TOTAL: 415 SQ.FT. PORCH: 109 SQ. FT.
TOTAL: 2,425 SQ.FT.




LOWER FLOOR PLAN
 Ceiling Height: 8'-0"



MAIN FLOOR PLAN
 Ceiling Height: 8'-0"



UPPER FLOOR PLAN
 Ceiling Height: 7'-8"

 Rick Stonehouse PREC*
 Dwayne Launt PREC*
 Shaun Gregory PREC*

STONEHOUSE
 TEAM



* PERSONAL REAL ESTATE CORPORATION. THE FLOOR PLAN ILLUSTRATION IS NOT SUITABLE FOR CONSTRUCTION/ ARCHITECTURAL PURPOSES. MEASUREMENTS ARE APPROXIMATE AND MAY NOT BE TO SCALE. E&O INSURED. FLOOR PLAN DESIGNED BY ISHOT.CA ENTERPRISES INC. 604-368-7979 ISHOT.CA

