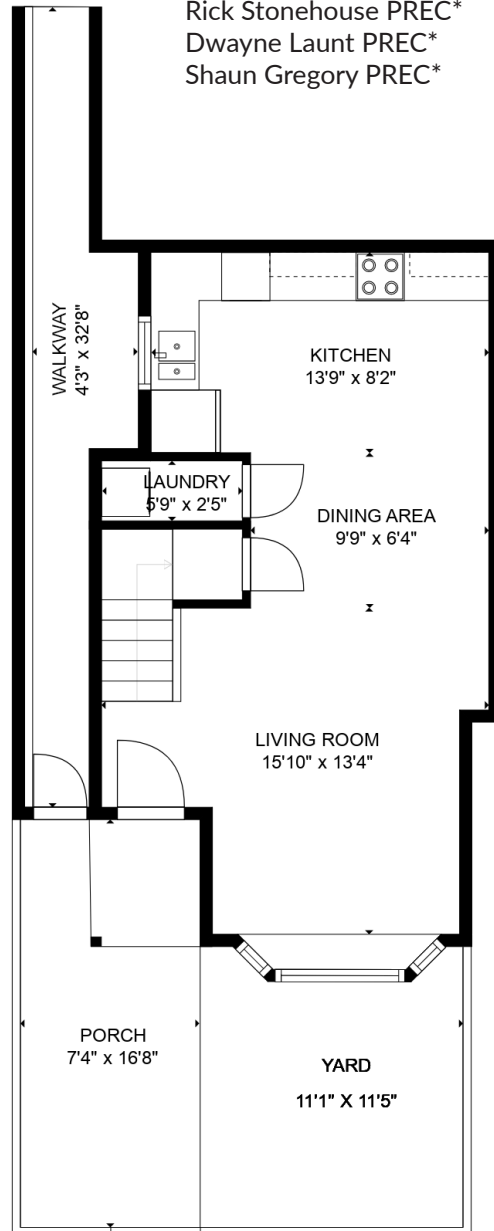
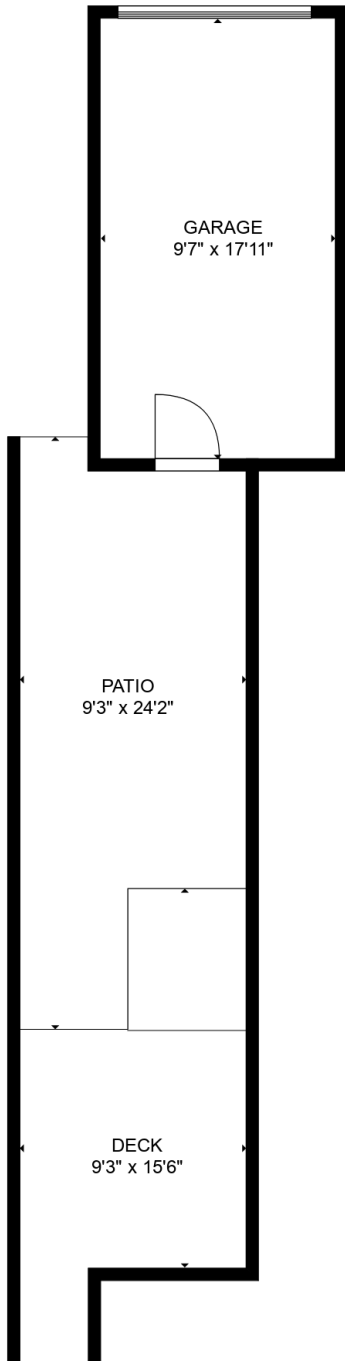


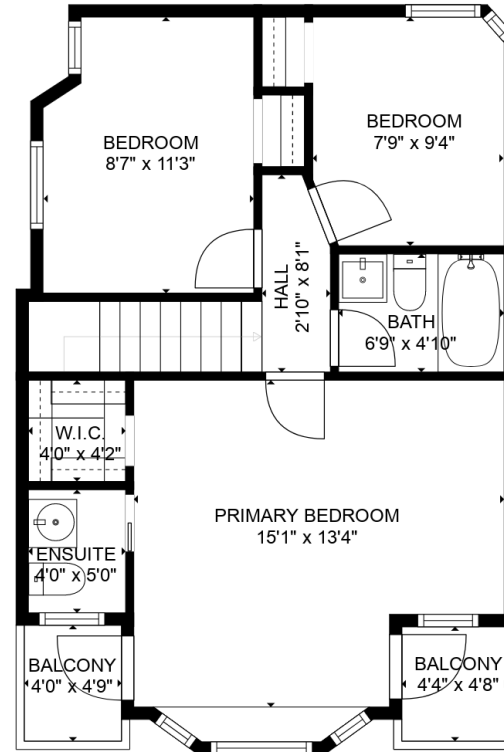
Rick Stonehouse PREC\*  
Dwayne Launt PREC\*  
Shaun Gregory PREC\*

**635 East Pender Street**  
Vancouver, BC

Lower Floor	443 sqft
Upper Floor	558 sqft
<b>Living Area</b>	<b>1,001 sqft</b>
Garage	201 sqft
Patio	187 sqft
Deck	128 sqft
Porch	122 sqft
Yard	127 sqft
Balcony (West)	19 sqft
Balcony (East)	20 sqft



Lower Floor: 443 sq.ft.  
Ceiling Height: 8'0"



Upper Floor: 558 sq.ft.  
Ceiling Height: 8'0"

