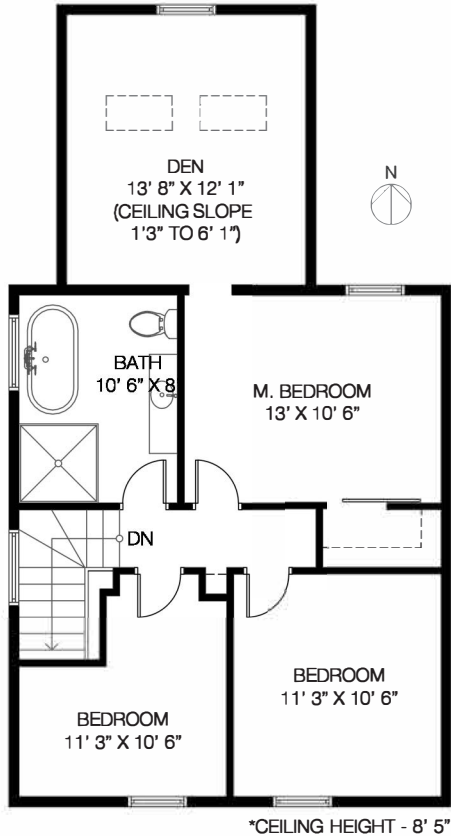


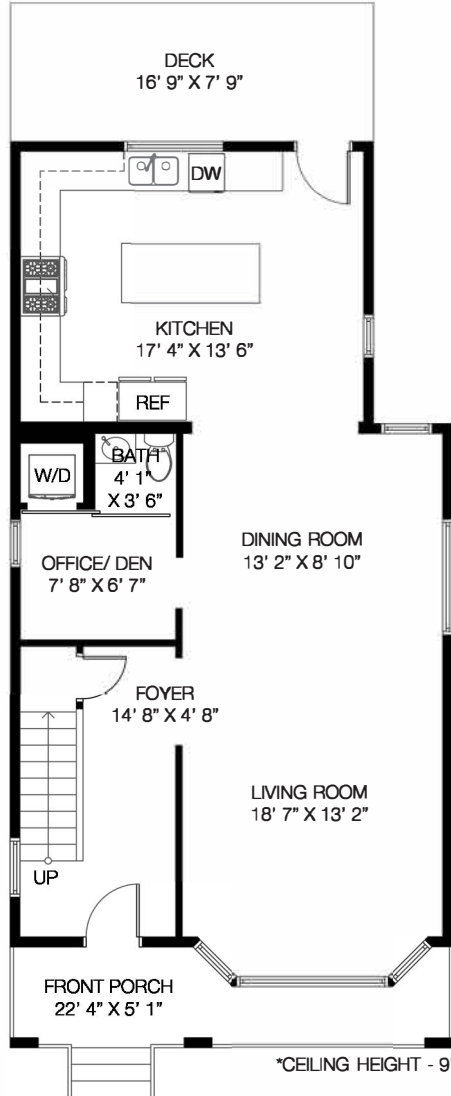
619 PRIOR STREET

5 bedrooms + 2 1/2 bathrooms

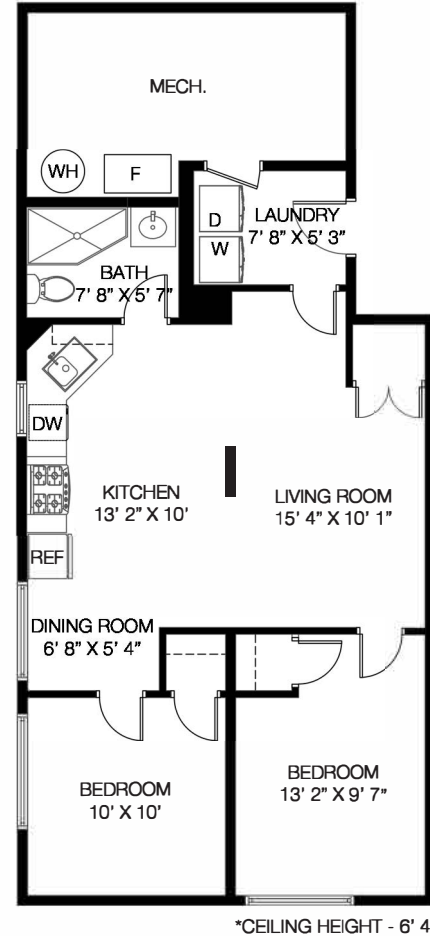
UPPER FLOOR
682 SQ.FT.



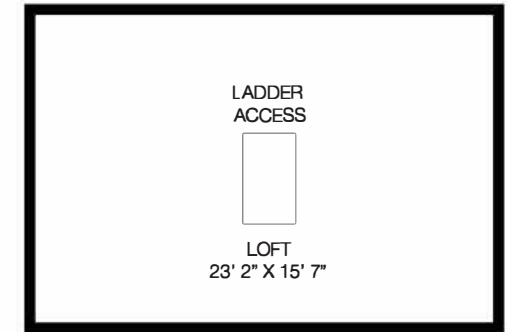
MAIN FLOOR
872 SQ.FT.



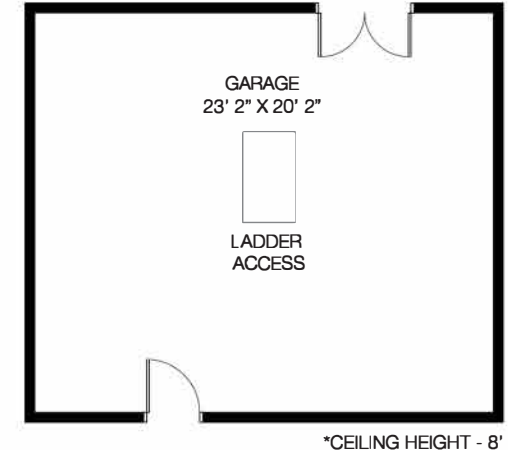
LOWER FLOOR
980 SQ.FT.



GARAGE LEVEL 2
400 SQ.FT.



GARAGE LEVEL 1
511 SQ.FT.



TOTAL INTERIOR: 2,534 SQ.FT.
TOTAL EXTERIOR: 222 SQ.FT.
GARAGE: 911 SQ.FT.