

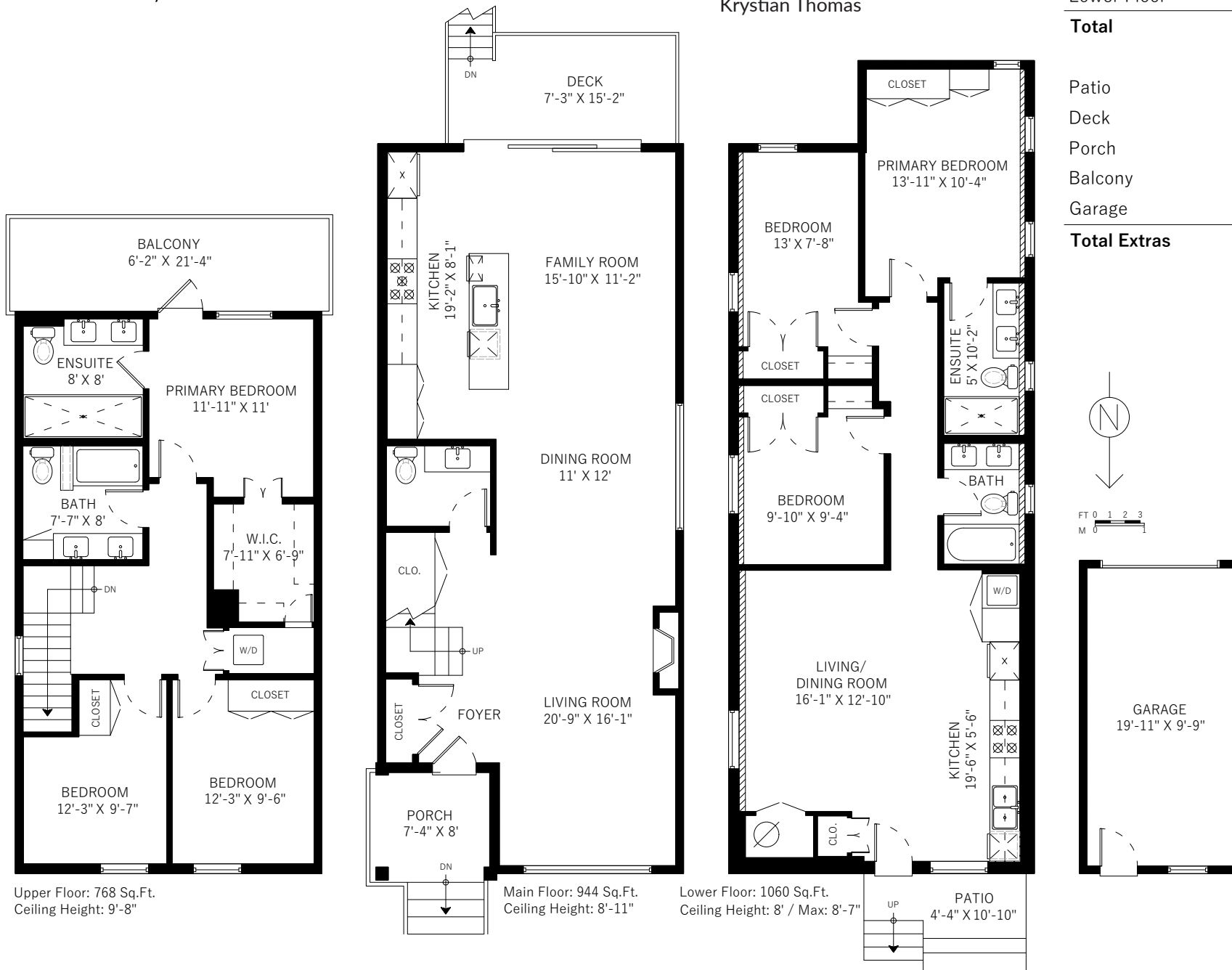
1920 Charles Steet Vancouver, BC



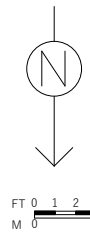
STONEHOUSE
TEAM

Rick Stonehouse PREC*
Dwayne Launt PREC*
Shaun Gregory PREC*
Krystian Thomas

Main Floor	944 SQ.FT.
Upper Floor	768 SQ.FT.
Lower Floor	1060 SQ.FT.
Total	2772 SQ.FT.



Patio	42 SQ.FT.
Deck	110 SQ.FT.
Porch	58 SQ.FT.
Balcony	141 SQ.FT.
Garage	225 SQ.FT.
Total Extras	576 SQ.FT.



Upper Floor: 768 Sq.Ft.
Ceiling Height: 9'-8"

Main Floor: 944 Sq.Ft.
Ceiling Height: 8'-11"

Lower Floor: 1060 Sq.Ft.
Ceiling Height: 8' / Max: 8'-7"