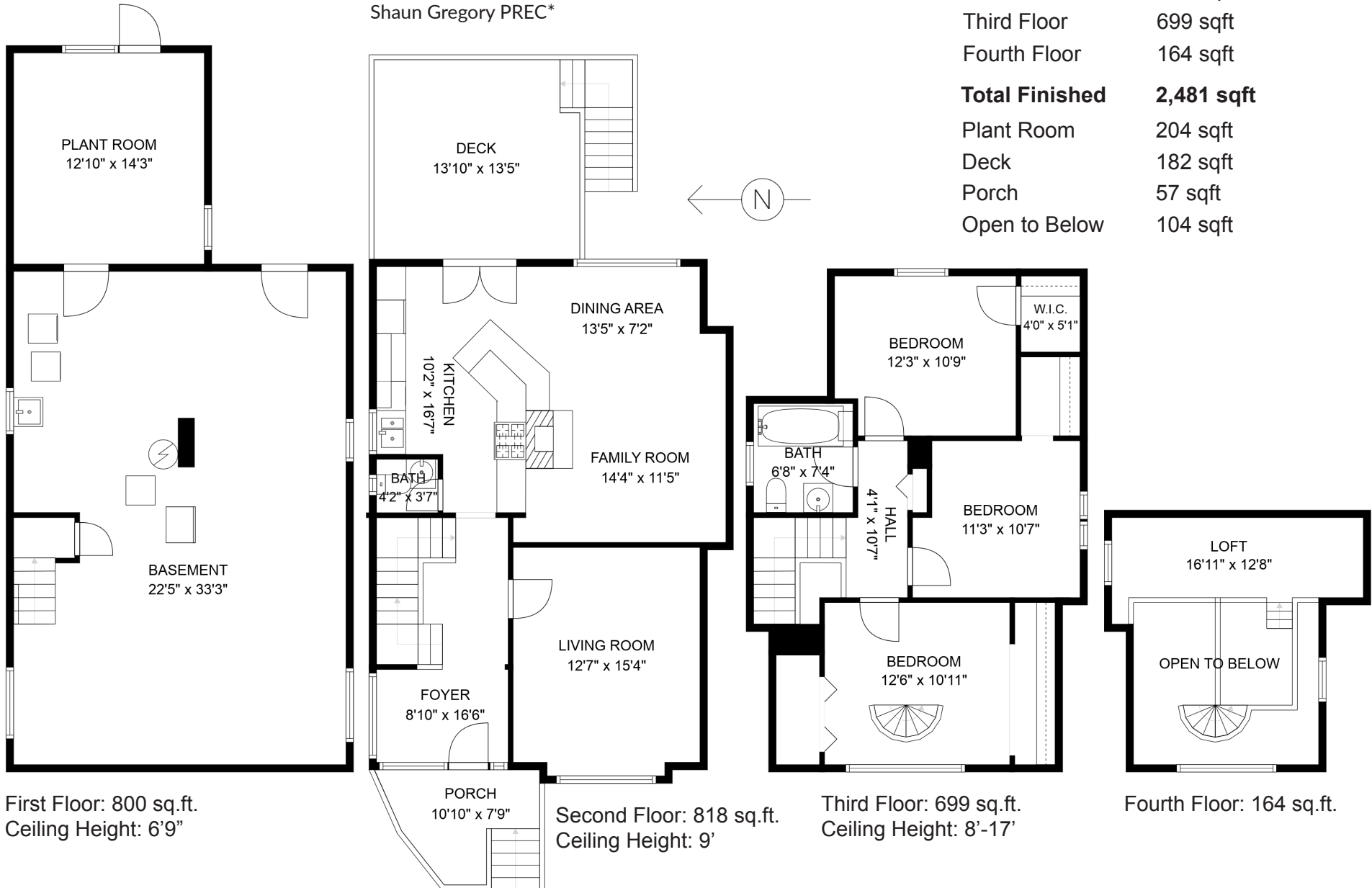


Rick Stonehouse PREC*
Dwayne Launt PREC*
Shaun Gregory PREC*

1420 Lakewood Drive
Vancouver, BC

First Floor	800 sqft
Second Floor	818 sqft
Third Floor	699 sqft
Fourth Floor	164 sqft
Total Finished	2,481 sqft
Plant Room	204 sqft
Deck	182 sqft
Porch	57 sqft
Open to Below	104 sqft



Floor plan is not suitable for architectural/construction purposes.
Sizes and dimensions are approximate, buyer to verify.