



STONEHOUSE TEAM

Rick Stonehouse PREC*
Dwayne Launt PREC*
Shaun Gregory PREC*

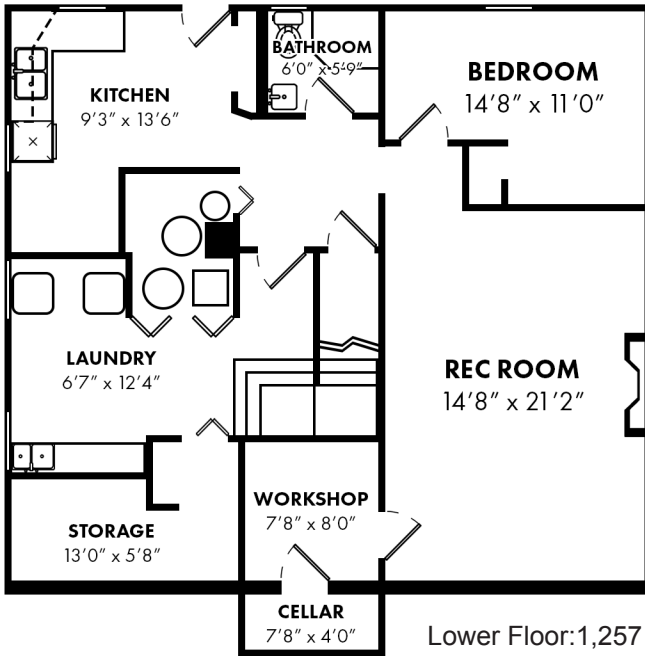
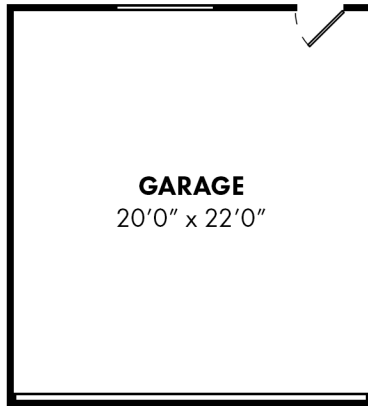
3756 Pandora Street

Burnaby, BC

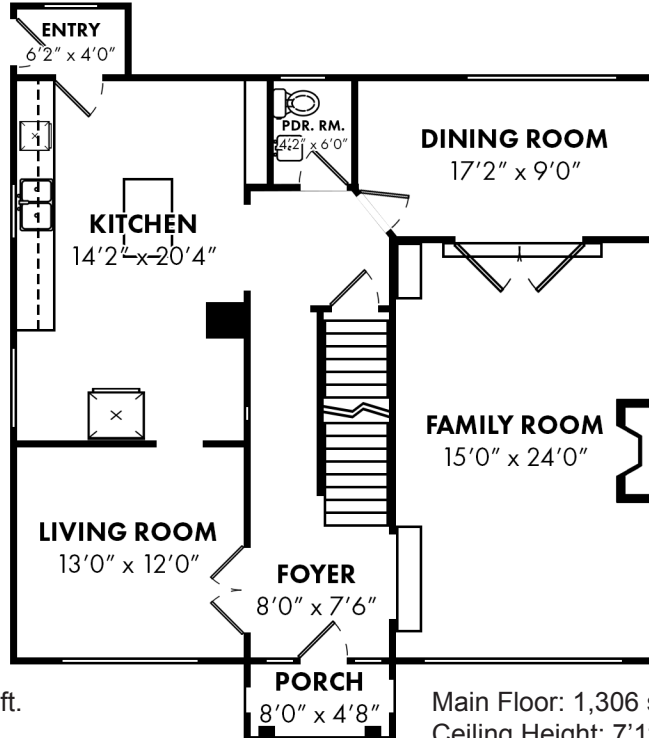
Lower Floor	1,257 sqft
Main Floor	1,306 sqft
Upper Floor	1,306 sqft

Living Area 3,869 sqft

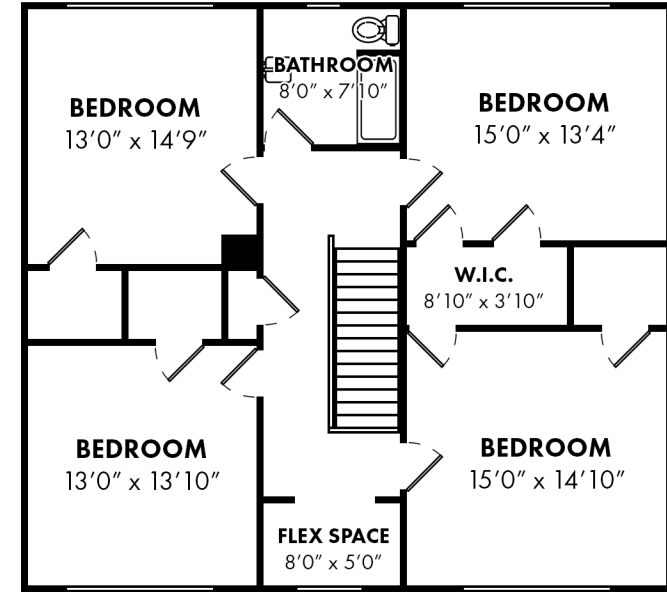
Porch	44 sqft
Entry	29 sqft
Cellar	29 sqft
Utility	49 sqft
Garage	465 sqft



Lower Floor: 1,257 sq.ft.
Ceiling Height: 7'5"



Main Floor: 1,306 sq.ft.
Ceiling Height: 7'11"



Upper Floor: 1,306 sq.ft.
Ceiling Height: 7'10"