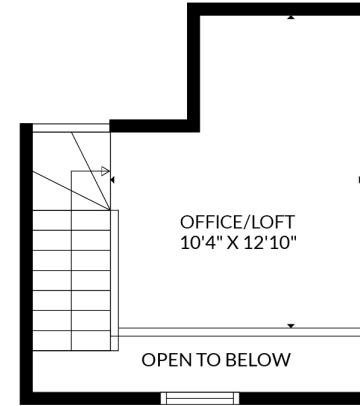
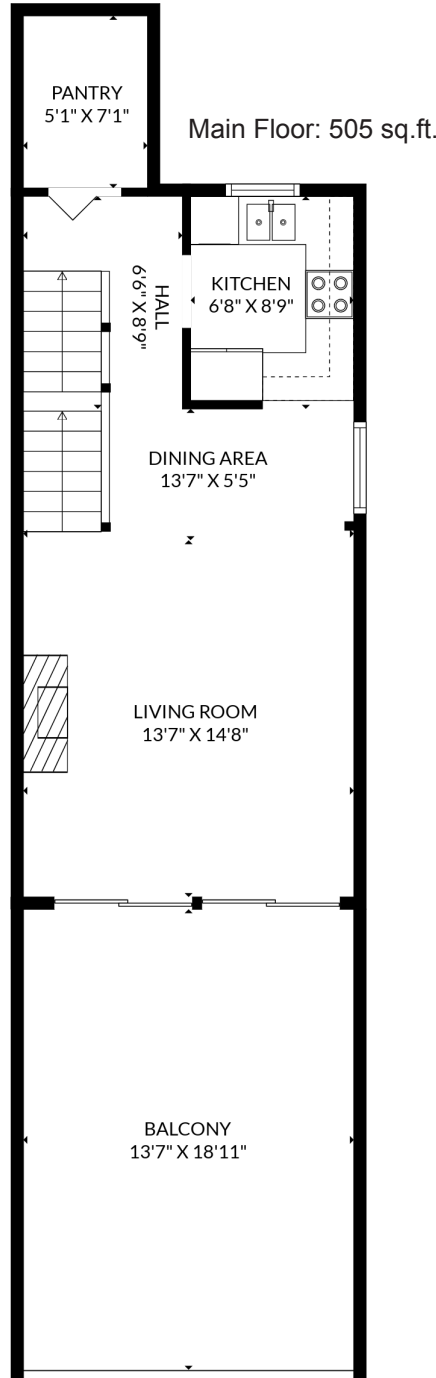
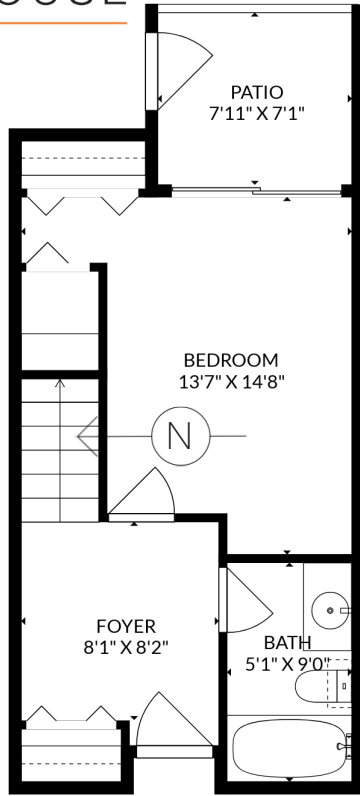




STONEHOUSE
TEAM

Rick Stonehouse PREC*
Dwayne Launt PREC*
Shaun Gregory PREC*



308 - 7377 Salisbury Avenue
Burnaby, BC

Lower Floor	385 sqft
Main Floor	505 sqft
Upper Floor	170 sqft
Living Area	1,060 sqft
Patio	56 sqft
Balcony	256 sqft
Open to Below	38 sqft

Floor plan is not suitable for architectural/construction purposes.
Sizes and dimensions are approximate, buyer to verify.