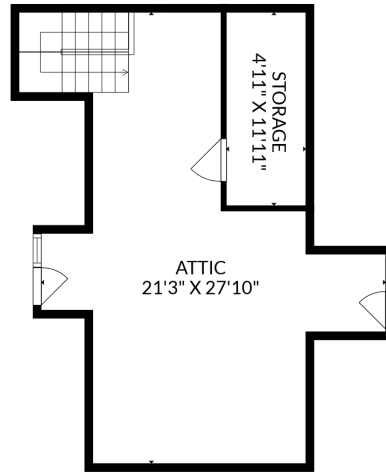


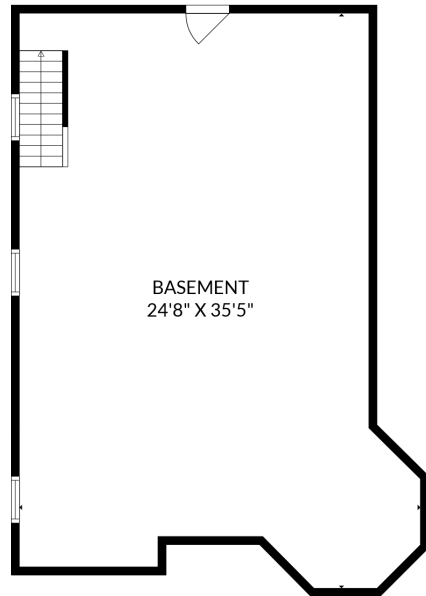
Rick Stonehouse PREC*
Dwayne Launt PREC*
Shaun Gregory PREC*

450 Heatley Avenue
Vancouver, BC

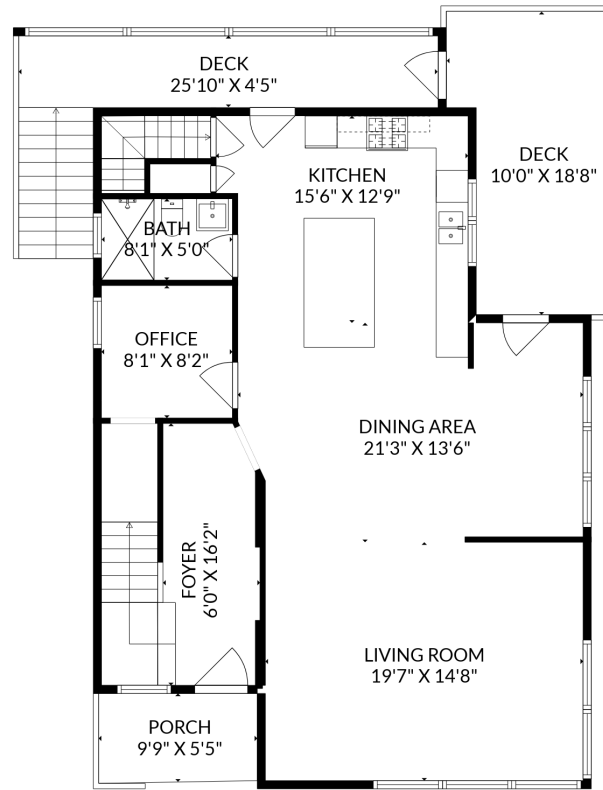
Basement	838 sqft
First Floor	1,155 sqft
Second Floor	877 sqft
Third Floor	481 sqft
Total Finished	3,351 sqft
Porch	53 sqft
Deck	278 sqft



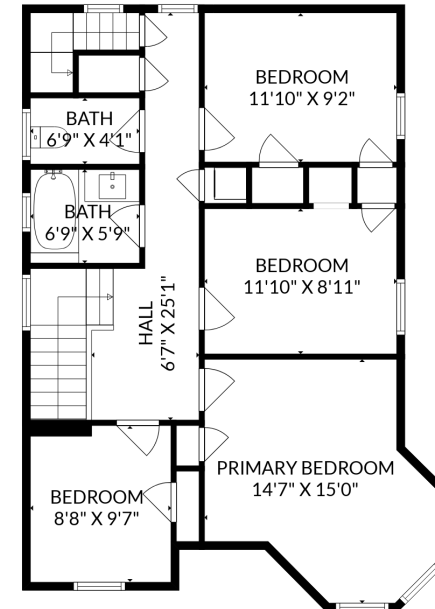
Third Floor: 481 sq.ft.
Ceiling Height: 7'10"



Basement: 838 sq.ft.
Ceiling Height: 12'0"



First Floor: 1,155 sq.ft.
Ceiling Height: 9'0"



Second Floor: 877 sq.ft.
Ceiling Height: 9'0"

Floor plan is not suitable for architectural/construction purposes.
Sizes and dimensions are approximate, buyer to verify.