

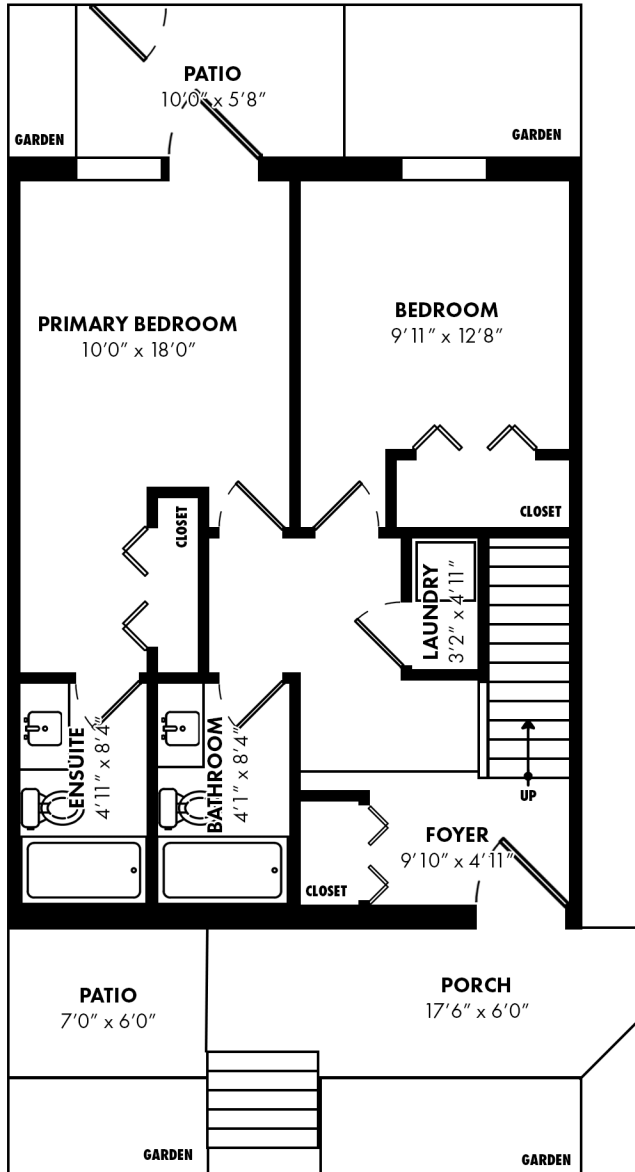


# STONEHOUSE TEAM

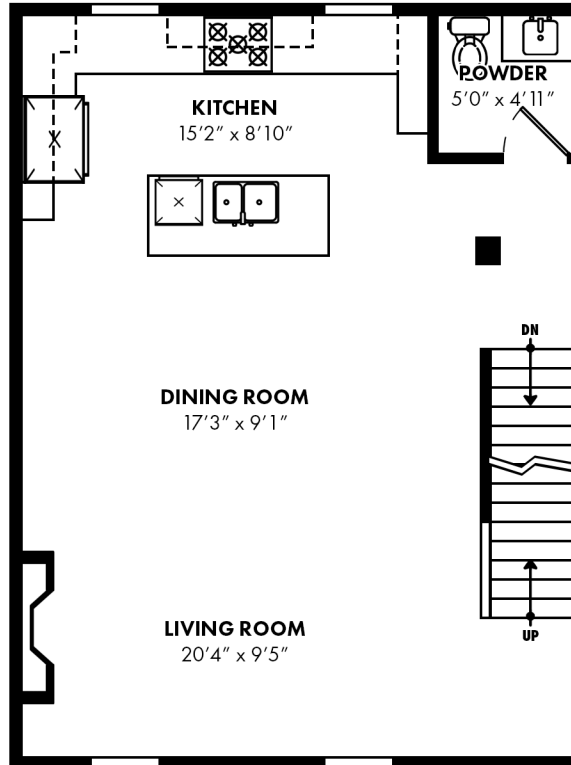
Rick Stonehouse PREC\*  
Dwayne Launt PREC\*  
Shaun Gregory PREC\*

## 1077 Salsbury Drive Vancouver, BC

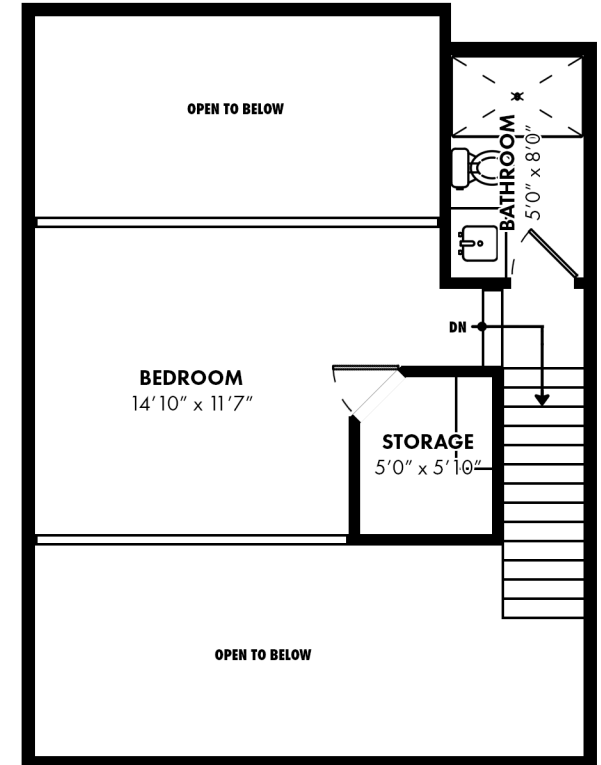
|                    |                   |
|--------------------|-------------------|
| Lower Floor        | 610sqft           |
| Main Floor         | 610 sqft          |
| Upper Floor        | 328 sqft          |
| <b>Living Area</b> | <b>1,548 sqft</b> |
| Front Patio        | 203 sqft          |
| Back Patio         | 124 sqft          |



Lower Floor: 610 sq.ft.  
Ceiling Height: 8'0"



Main Floor: 610 sq.ft.  
Ceiling Height: 7'10" - 15'8"



Upper Floor: 328 sq.ft.  
Ceiling Height: 7'0"



Floor plan is not suitable for architectural/construction purposes.  
Sizes and dimensions are approximate, buyer to verify.