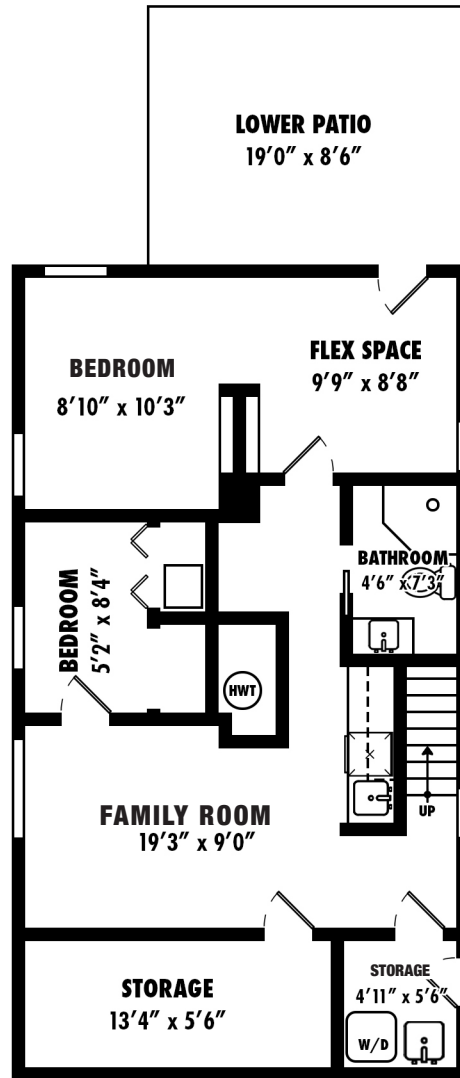


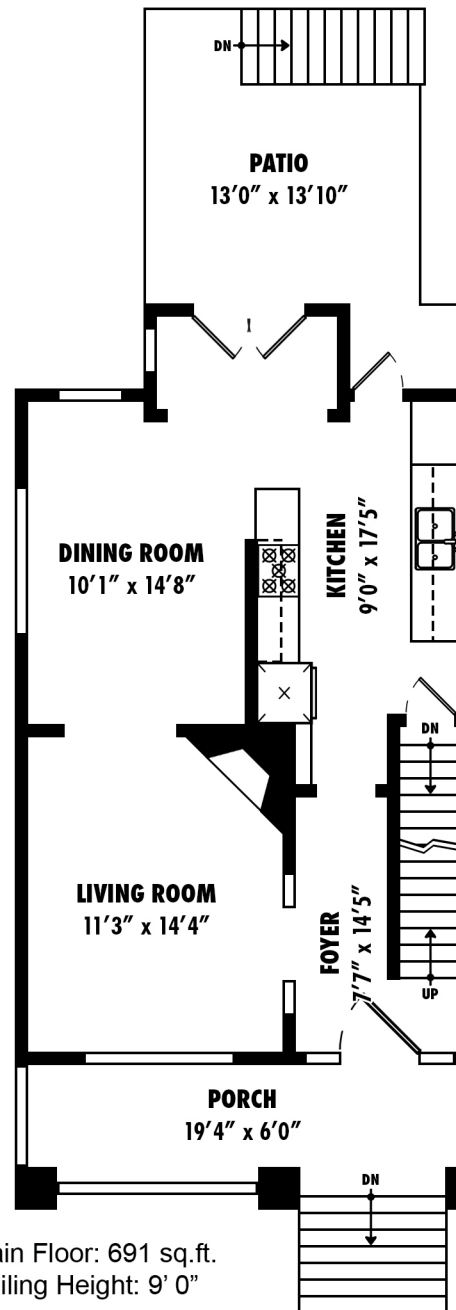


STONEHOUSE  
TEAM

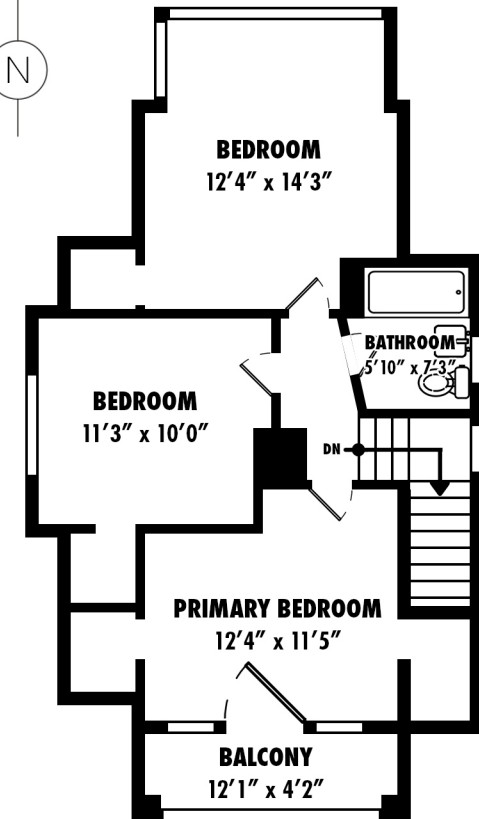
Rick Stonehouse PREC\*  
Dwayne Launt PREC\*  
Shaun Gregory PREC\*



Lower Floor: 767 sq.ft.  
Ceiling Height: 6' 10"



Main Floor: 691 sq.ft.  
Ceiling Height: 9' 0"



Upper Floor: 683 sq.ft.  
Ceiling Height: 7' 10"

## 2025 Charles Street Vancouver, BC

Lower Floor	767 sqft
Main Floor	691 sqft
Upper Floor	683 sqft
<b>Living Area</b>	<b>2,141 sqft</b>
Lower Patio	135 sqft
Porch	15 sqft
Patio	19 sqft
Balcony	87 sqft

Floor plan is not suitable for architectural/construction purposes.  
Sizes and dimensions are approximate, buyer to verify.