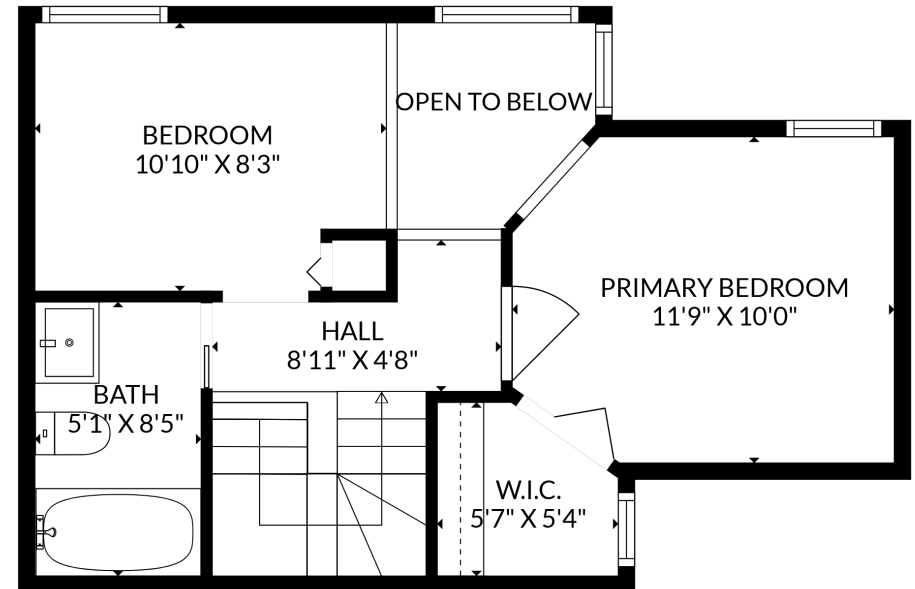
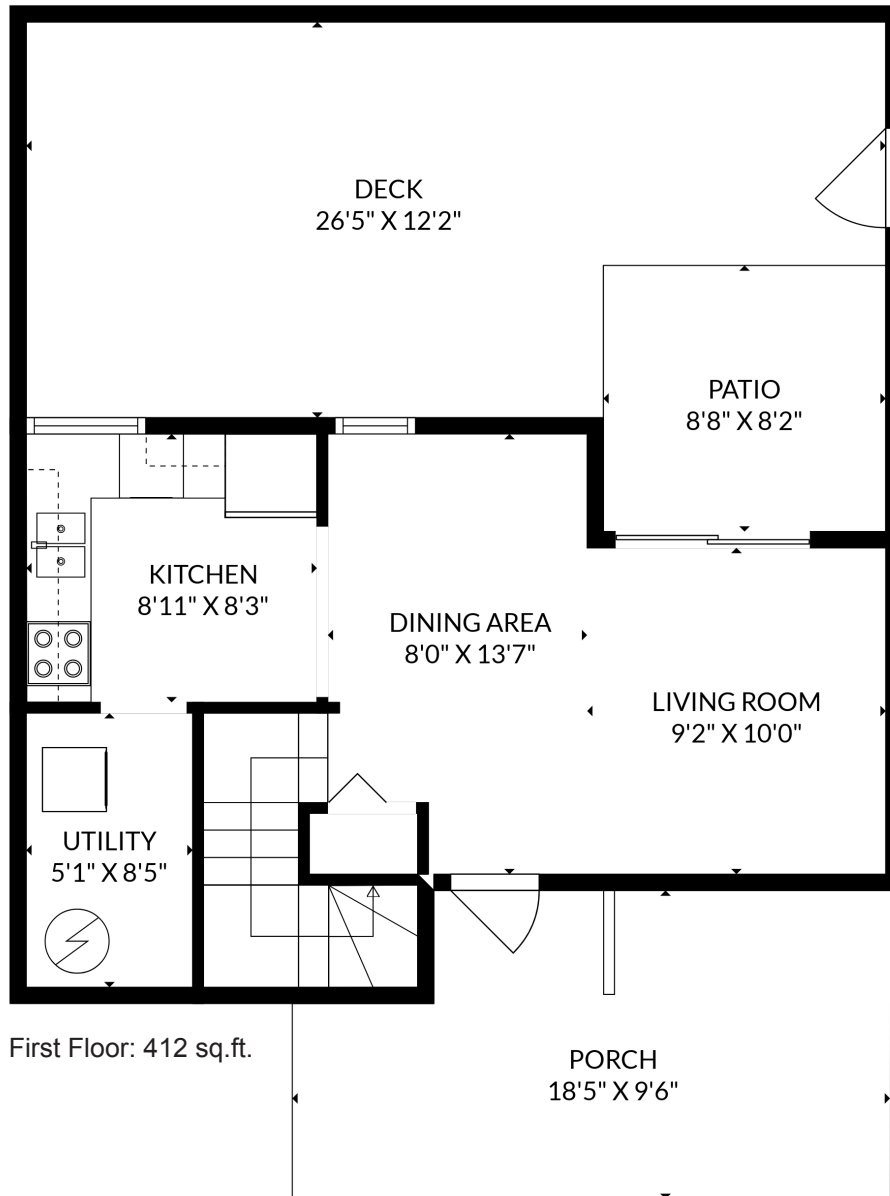


Rick Stonehouse PREC*
Dwayne Launt PREC*
Shaun Gregory PREC*

4 - 513 East Pender Street
Vancouver, BC

First Floor	412 sqft
Second Floor	394 sqft
Total Finished	806 sqft
Porch	160 sqft
Patio	71 sqft
Deck	281 sqft
Open to Below	39 sqft



Second Floor: 394 sq.ft.