

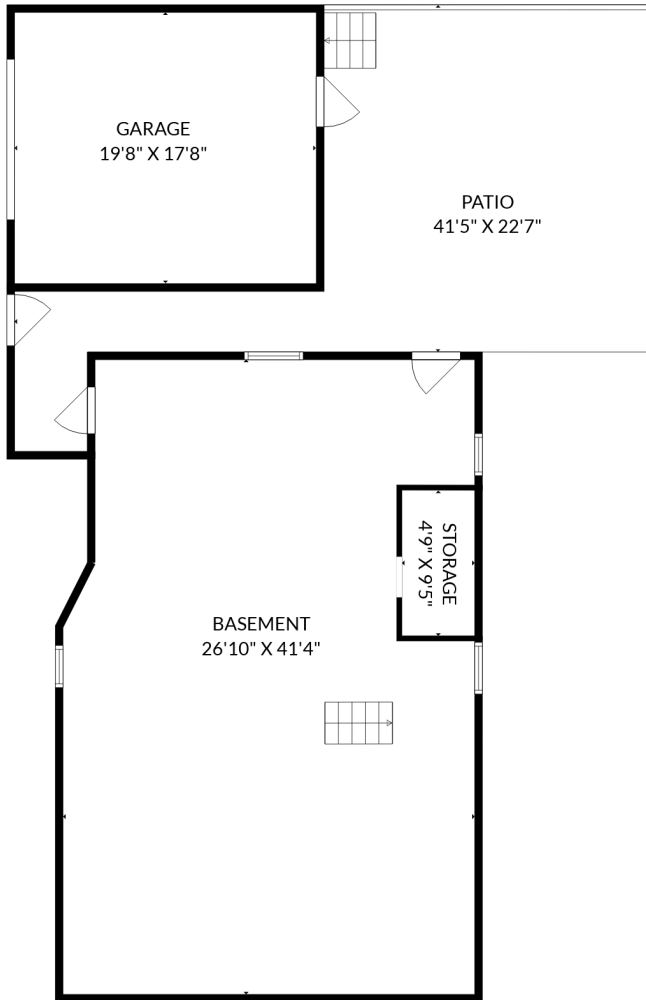
Rick Stonehouse PREC\*  
Dwayne Launt PREC\*  
Shaun Gregory PREC\*

**601 East Pender Street**

Vancouver, BC

**Extras**

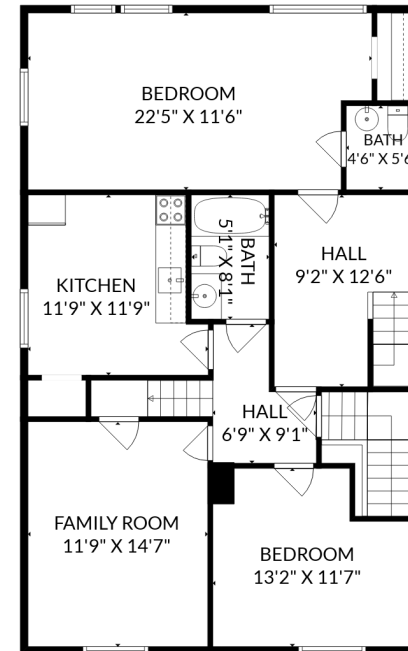
First Floor	1,247 sqft	Porch	155 sqft
Second Floor	1,109 sqft	Patio (S)	324 sqft
Third Floor	451 sqft	Garage	385 sqft
<b>Total Finished</b>	<b>2,807 sqft</b>	Patio (N)	591 sqft
Basement	1,145 sqft		



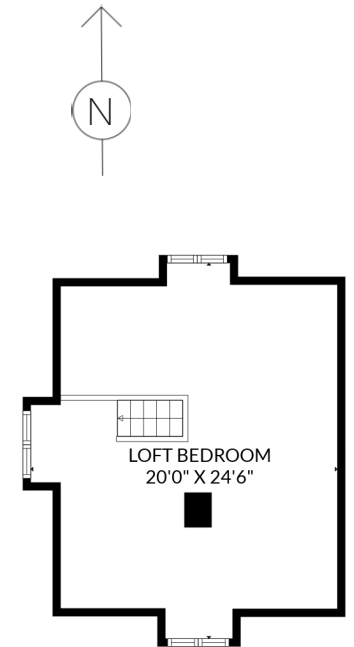
Basement: 1,145 sq.ft.



First Floor: 1,247 sq.ft.



Second Floor: 1,109 sq.ft.



Third Floor: 451 sq.ft.