

# 1914 E 4th Avenue Vancouver, BC

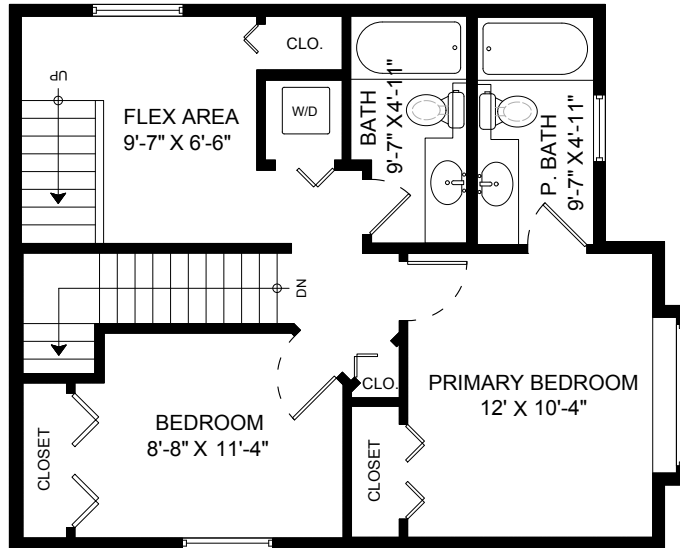


**STONEHOUSE**  
TEAM

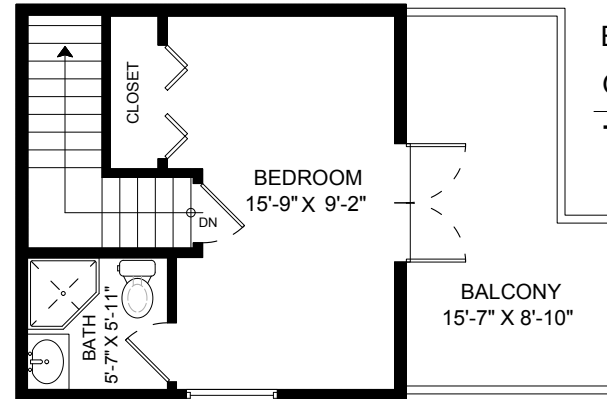
Main Floor	596 SQ.FT.
Upper Floor	611 SQ.FT.
Top Floor	276 SQ.FT.
<b>Total</b>	<b>1483 SQ.FT.</b>

Rick Stonehouse PREC\*  
Dwayne Launt PREC\*  
Shaun Gregory PREC\*  
Krystian Thomas

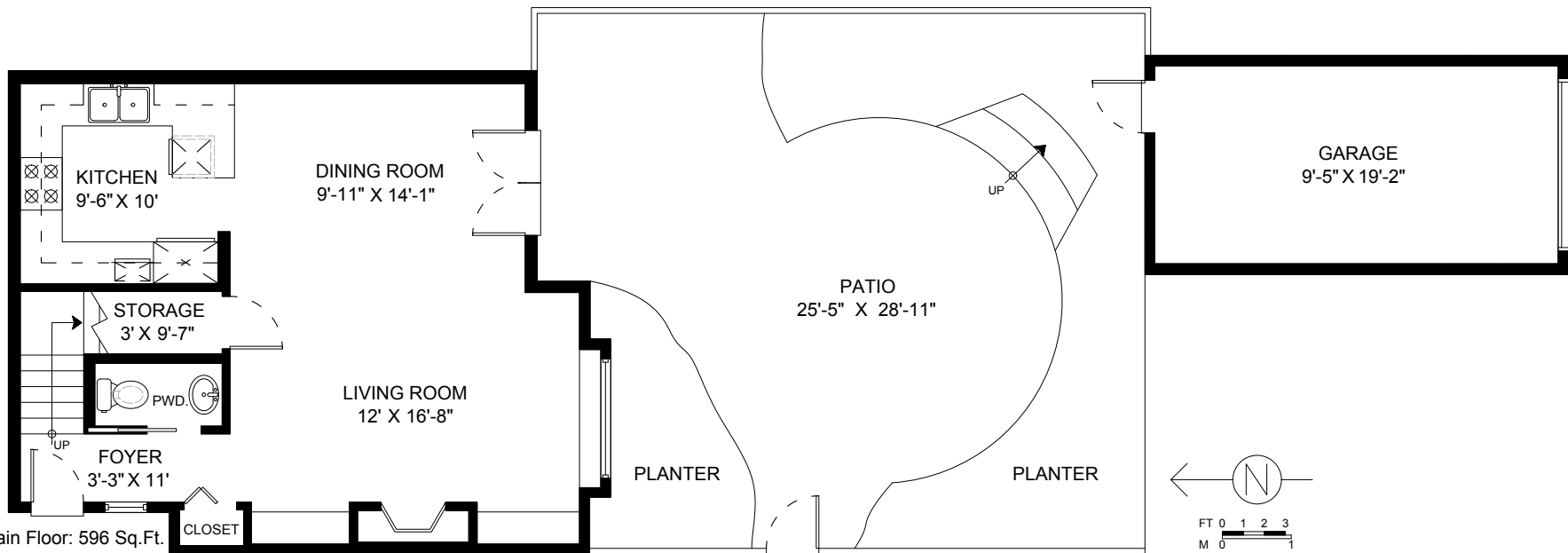
Patio	704 SQ.FT.
Balcony	117 SQ.FT.
Garage	210 SQ.FT.
<b>Total Extras</b>	<b>1031 SQ.FT.</b>



Upper Floor: 611 Sq.Ft.  
Ceiling Height: 0'-0"



Top Floor: 276 Sq.Ft.  
Ceiling Height: 0'-0"



Main Floor: 596 Sq.Ft.  
Ceiling Height: 0'-0"

