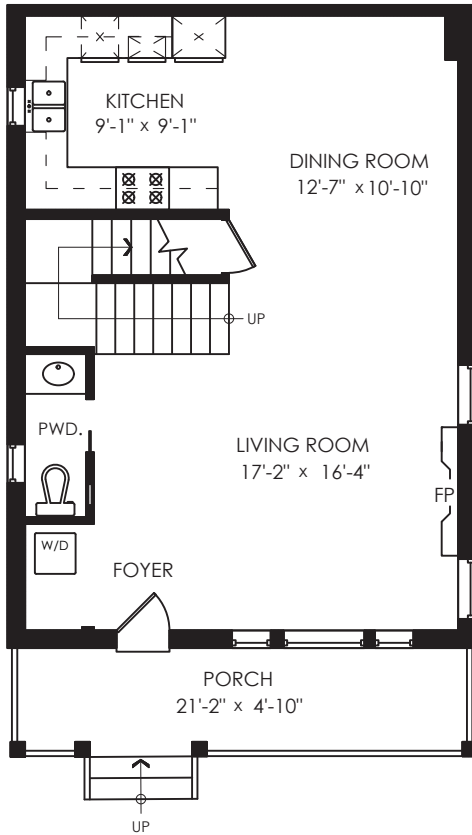
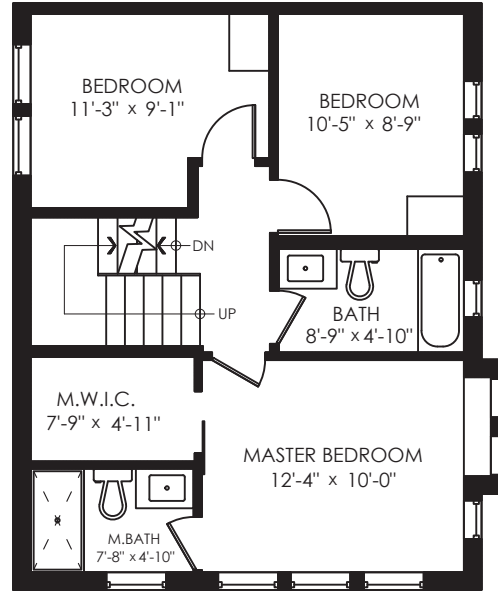


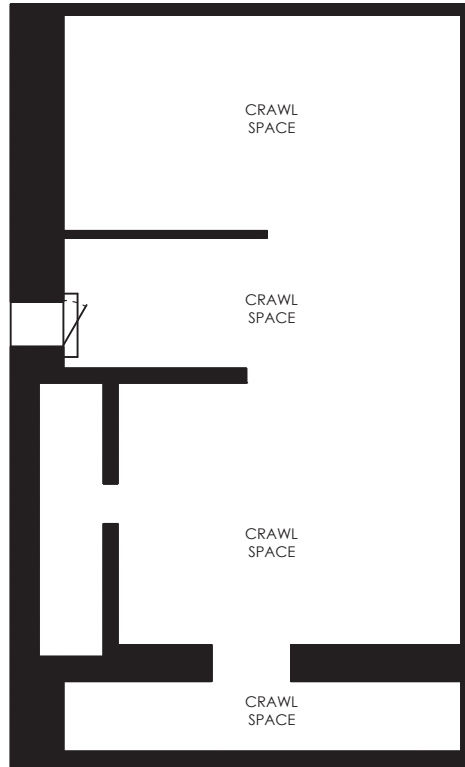
Rick Stonehouse PREC*
Dwayne Launt PREC*
Shaun Gregory PREC*
Krystian Thomas



Main Floor: 668 Sq.Ft.
Ceiling Height: 8'-11"



Upper Floor: 609 Sq.Ft.
Ceiling Height: 8'-0"



Ceiling Height: 4'-0"

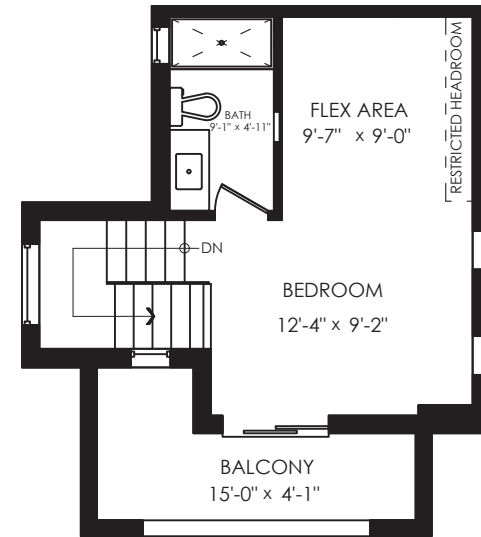
Floor plan not suitable for architectural/construction purposes. ANSI Z765 standard used to calculate square footage. Buyer to verify.

1828 Graveley St. Vancouver, BC

Main Floor	668 SQ.FT.
Upper Floor	609 SQ.FT.
Top Floor	343 SQ.FT.
Total	1620 SQ.FT.

Crawl Space	792 SQ.FT.
Porch	111 SQ.FT.
Balcony	97 SQ.FT.
Total Extras	1000 SQ.FT.

Restricted Headroom	19 SQ.FT.
---------------------	-----------



Top Floor: 343 Sq.Ft.
Vaulted Ceiling Height: 11'-6"