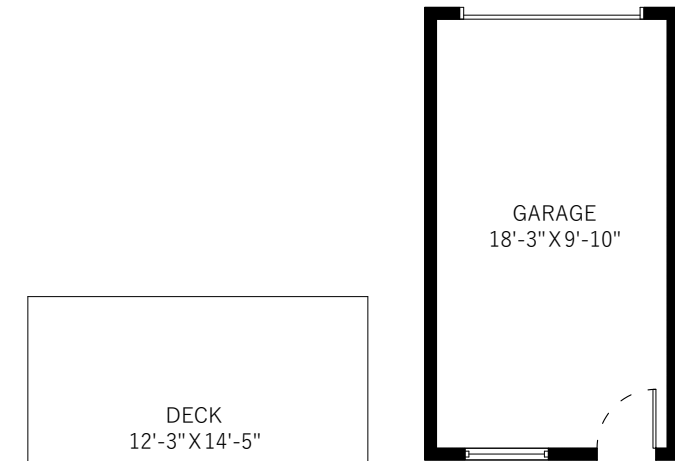
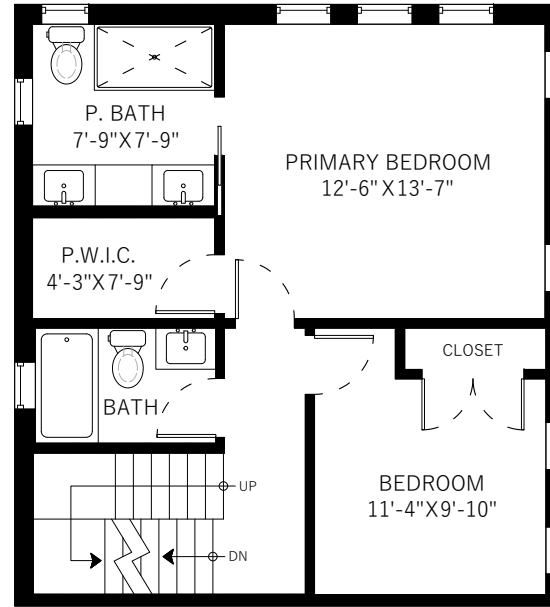


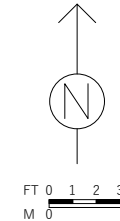
1751 E 14th Avenue Vancouver, BC



Main Floor: 619 Sq.Ft.
Ceiling Height: 9'-5"



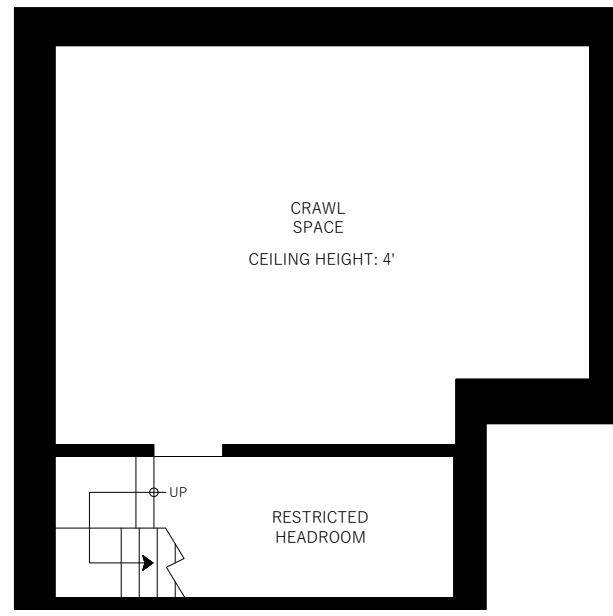
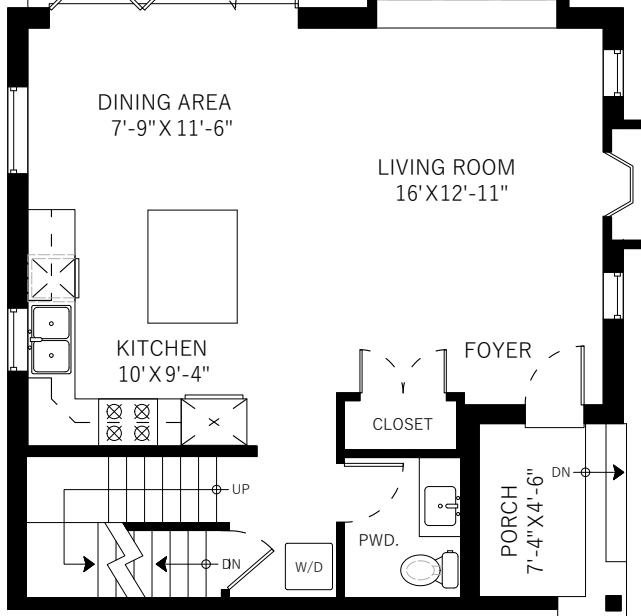
Upper Floor: 597 Sq.Ft.
Ceiling Height: 8'-4"



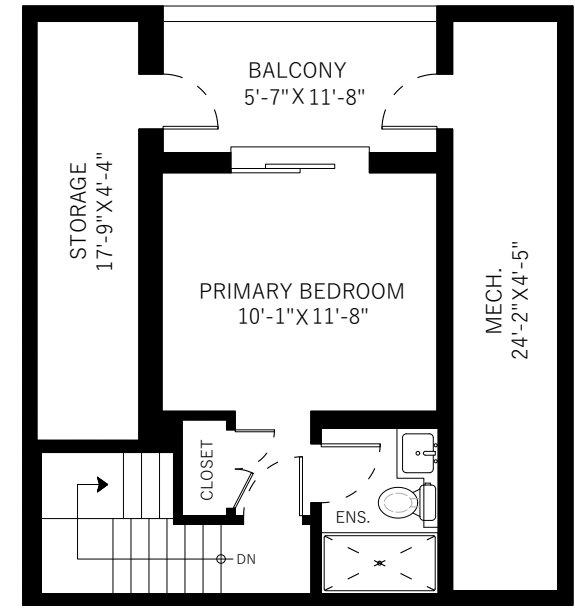
Main Floor	619 SQ.FT.
Upper Floor	597 SQ.FT.
Top Floor	291 SQ.FT.
Total	1507 SQ.FT.

Deck	177 SQ.FT.
Porch	33 SQ.FT.
Storage	97 SQ.FT.
Mech.	134 SQ.FT.
Balcony	72 SQ.FT.
Garage	207 SQ.FT.
Total Extras	720 SQ.FT.

Lower Floor R.H. 623 SQ.FT.



Lower Floor: 619 Sq.Ft.
Ceiling Height: 5'



Top Floor: 291 Sq.Ft.
Ceiling Height: 10'-7"