



STONEHOUSE TEAM

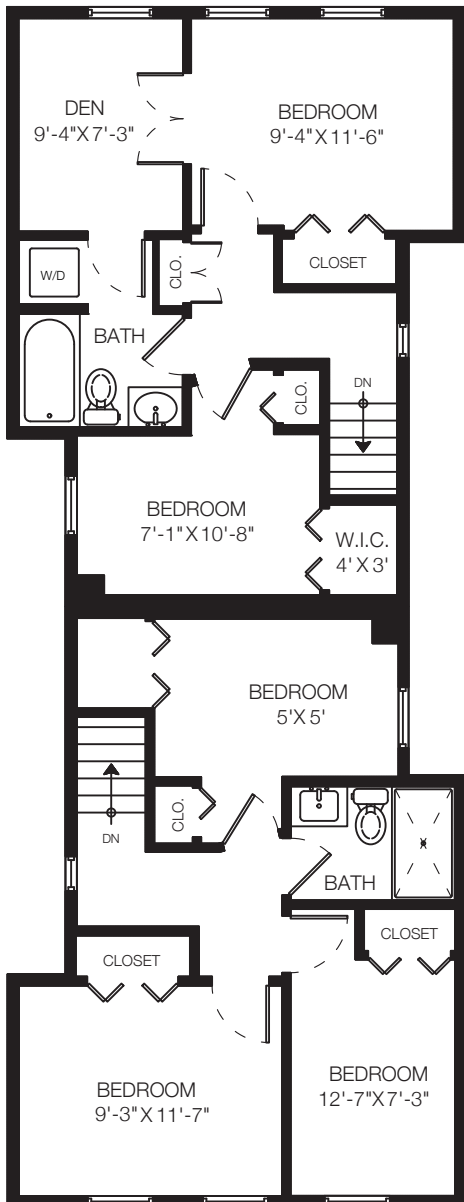
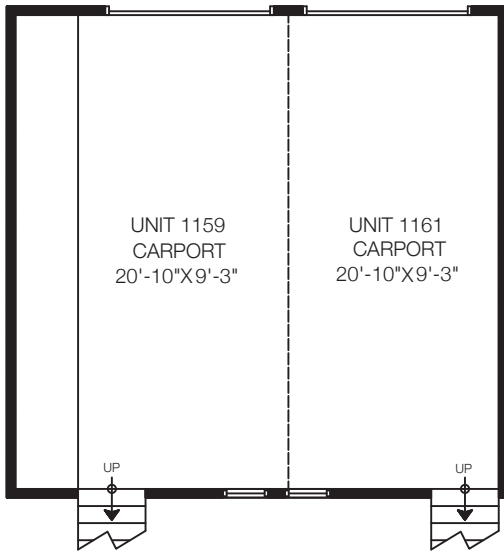
1159/1161 E Pender St Vancouver, BC

Rick Stonehouse PREC*
Dwayne Launt PREC*
Shaun Gregory PREC*
Krystian Thomas

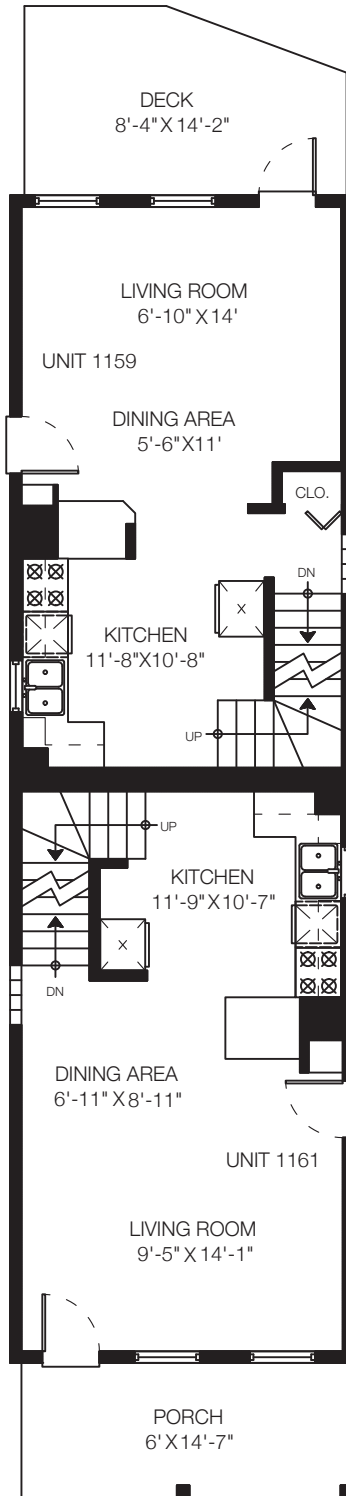


Main Floor	772 SQ.FT.
Upper Floor	941 SQ.FT.
Lower Floor	208 SQ.FT.
Total	1921 SQ.FT.

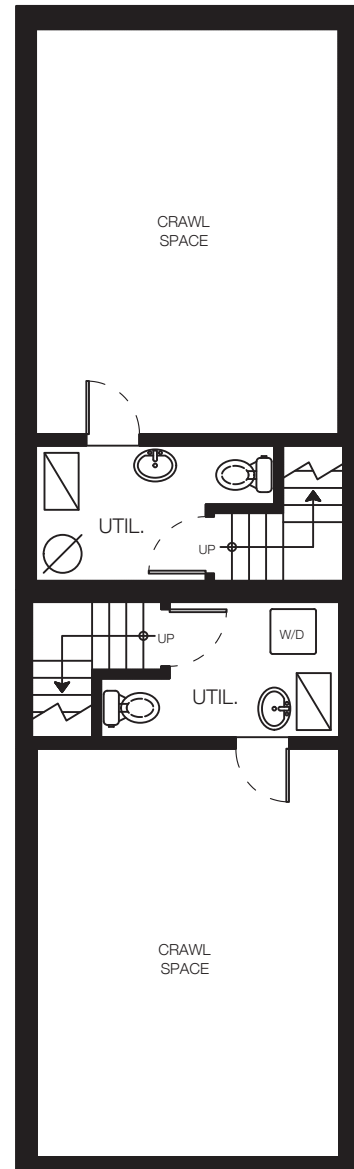
Porch	88 SQ.FT.
Deck	106 SQ.FT.
Carport	474 SQ.FT.
Total Extras	668 SQ.FT.



Upper Floor: 941 Sq.Ft.
Ceiling Height: 8'



Main Floor: 772 Sq.Ft.
Ceiling Height: 8'



Lower Floor: 208 Sq.Ft.

Floor plan not suitable for architectural/construction purposes. ANSI Z765 standard used to calculate square footage. Buyer to verify.

