

STONEHOUSE
TEAM

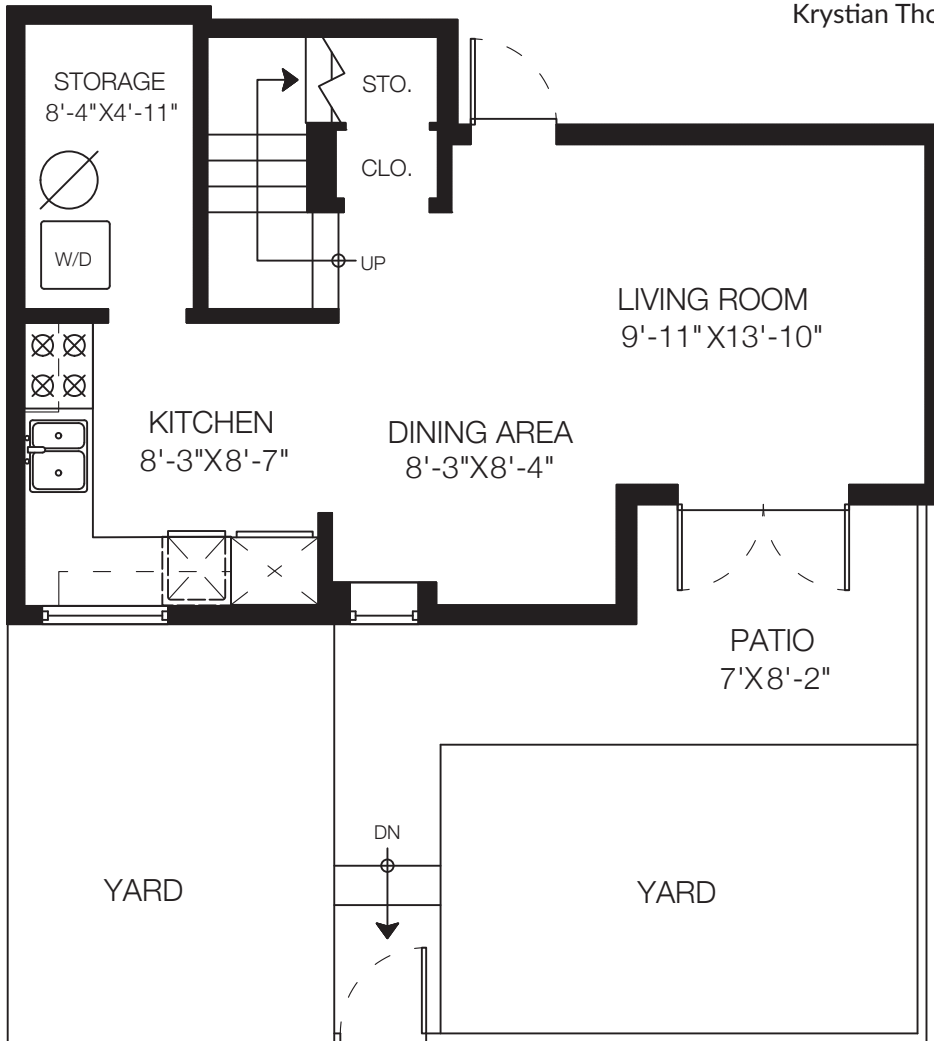
Rick Stonehouse PREC*
Dwayne Launt PREC*
Shaun Gregory PREC*
Krystian Thomas

4-488 Jackson Ave
Vancouver, BC

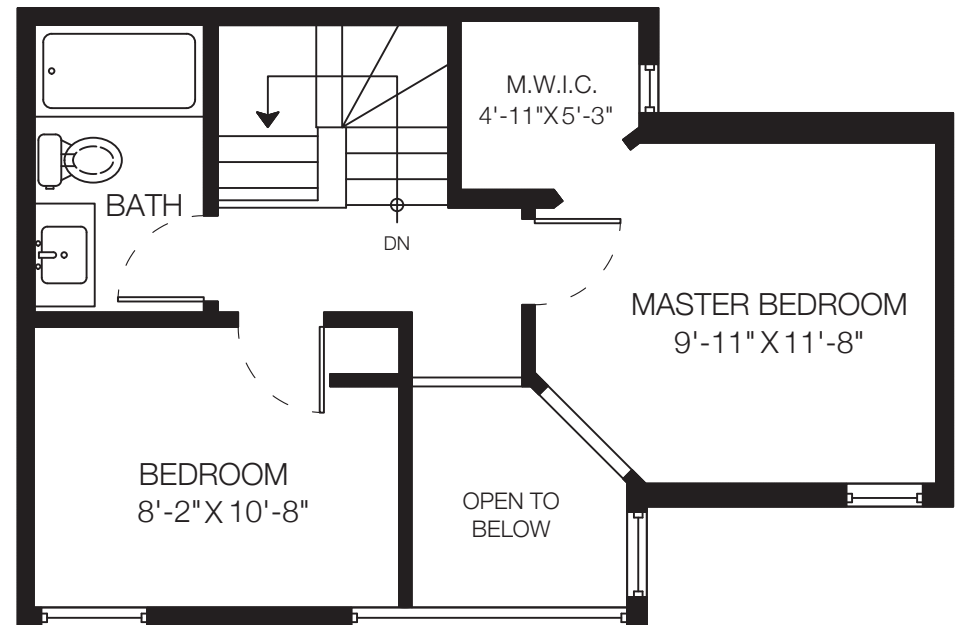
Main Floor	408 SQ.FT.
Upper Floor	392 SQ.FT.
Total	800 SQ.FT.

Patio 99 SQ.FT.

Open To Below 42 SQ.FT.



Main Floor: 408 Sq.Ft.
Ceiling Height: 8'



Upper Floor: 392 Sq.Ft.
Ceiling Height: 8'

Floor plan not suitable for architectural/construction purposes. ANSI Z765 standard used to calculate square footage. Buyer to verify.