

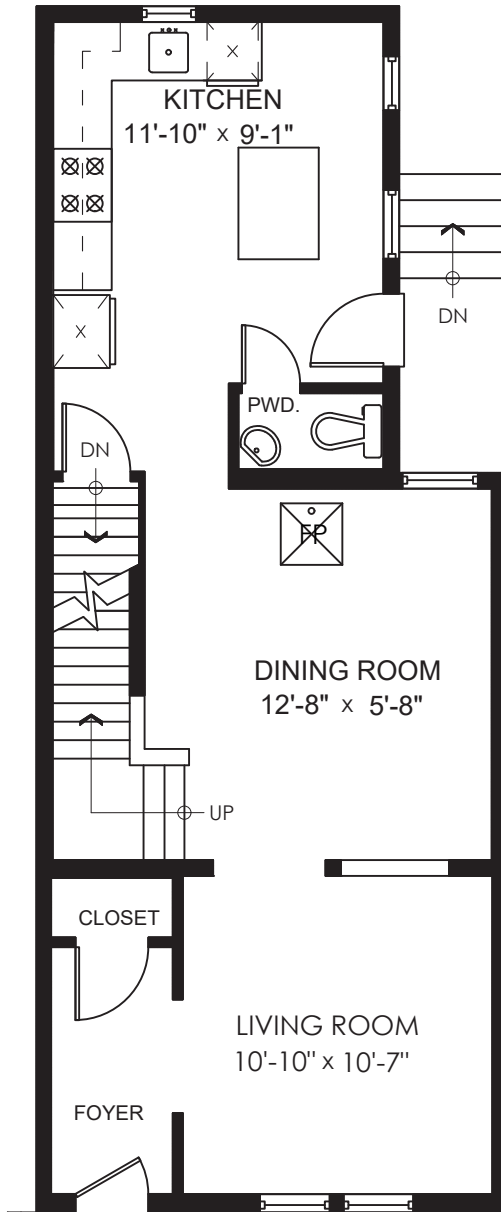


STONEHOUSE  
TEAM

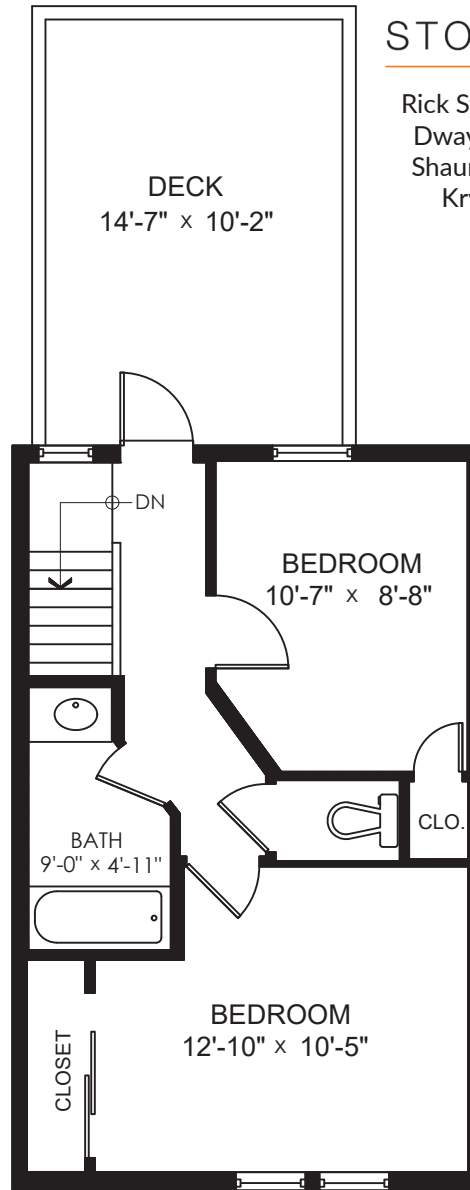
Rick Stonehouse PREC\*  
Dwayne Launt PREC\*  
Shaun Gregory PREC\*  
Krystian Thomas

736 Jackson Ave.  
Vancouver, BC

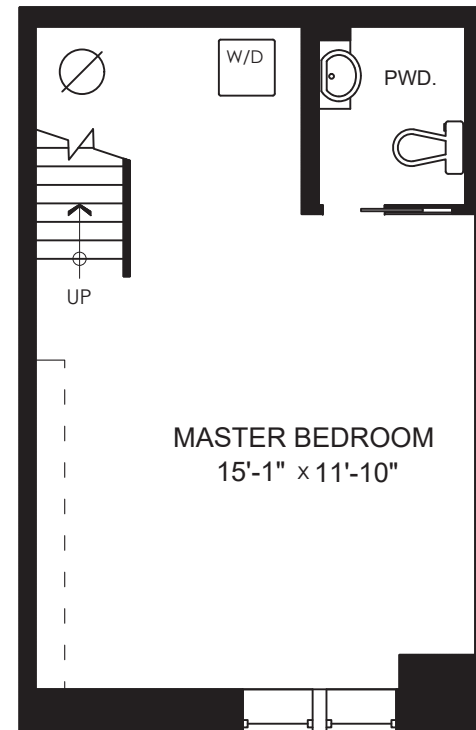
Main Floor	606 SQ.FT.
Upper Floor	411 SQ.FT.
Lower Floor	399 SQ.FT.
<b>Total</b>	<b>1416 SQ.FT.</b>
Deck	167 SQ.FT.



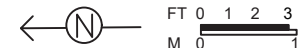
Main Floor: 606 Sq.Ft.  
Ceiling Height: 8'-10"



Upper Floor: 411 Sq.Ft.  
Ceiling Height: 7'-10"



Lower Floor: 399 Sq.Ft.  
Ceiling Height: 7'-0"



**S** SNOWCHIMP  
CREATIVE