

1620 Adanac Street Vancouver, BC

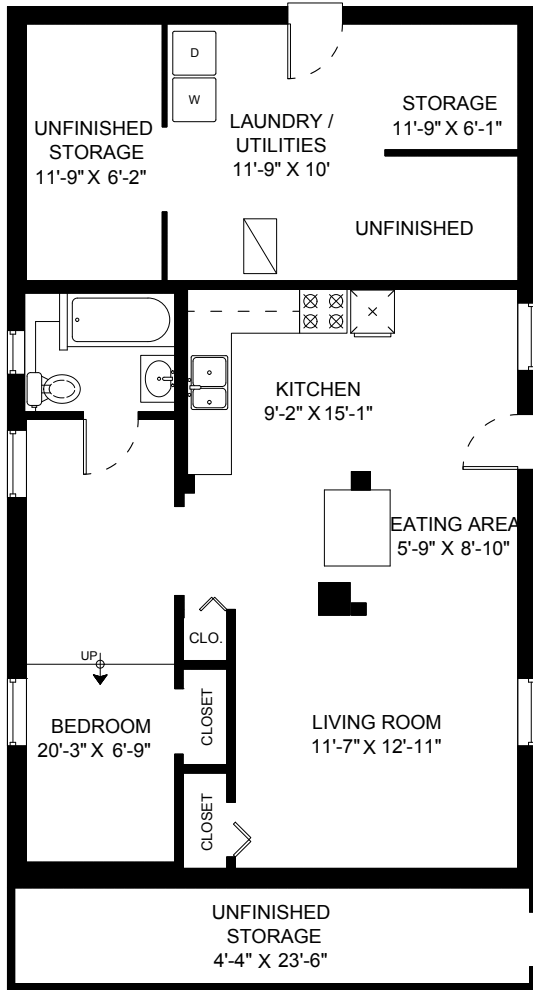


Rick Stonehouse PREC*
Dwayne Launt PREC*
Shaun Gregory PREC*
Krystian Thomas

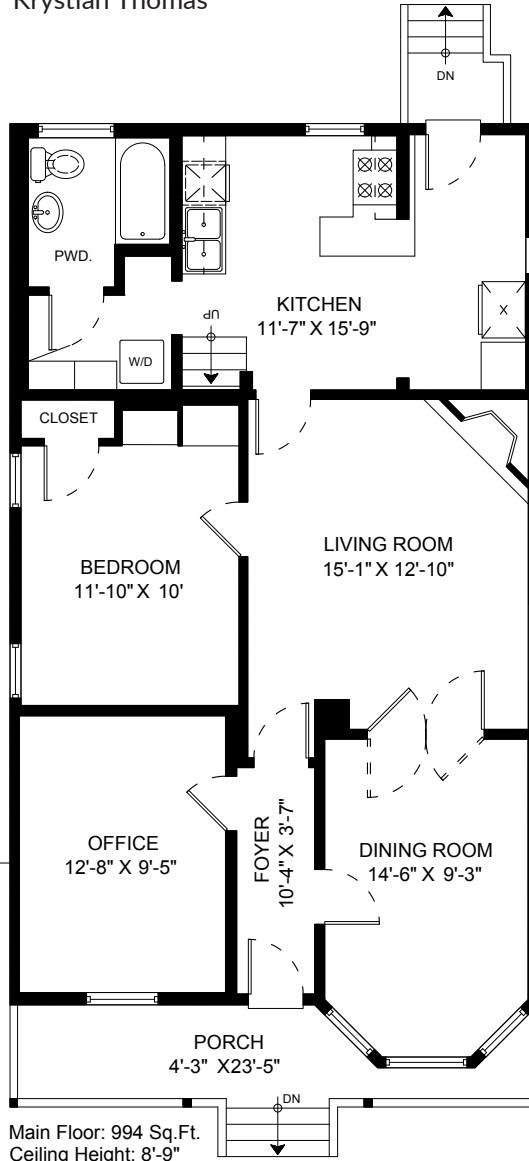
Main Floor	994 SQ.FT.
Upper Floor	340 SQ.FT.
Lower Floor	670 SQ.FT.
Total	2004 SQ.FT.

Porch	92 SQ.FT.
Garage/ Storage shed	283 SQ.FT.
Total Extras	375 SQ.FT.

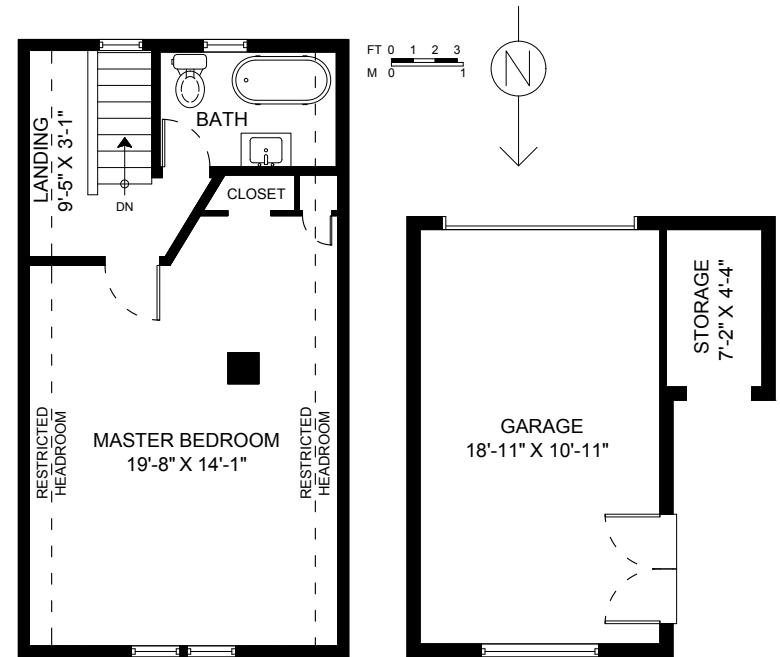
Unfinished Sto/ Laundry	114 SQ.FT.
Restricted Headroom	86 SQ.FT.



Lower Floor: 670 Sq.Ft.
Ceiling Height: 6'-8"



Main Floor: 994 Sq.Ft.
Ceiling Height: 8'-9"



Upper Floor: 340 Sq.Ft.
Ceiling Height: 7'