



# STONEHOUSE

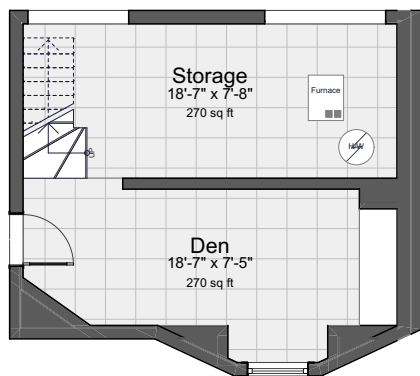
T E A M

Sutton Group - West Coast Realty  
emailus@stonehouseteam.com  
604.255.7575

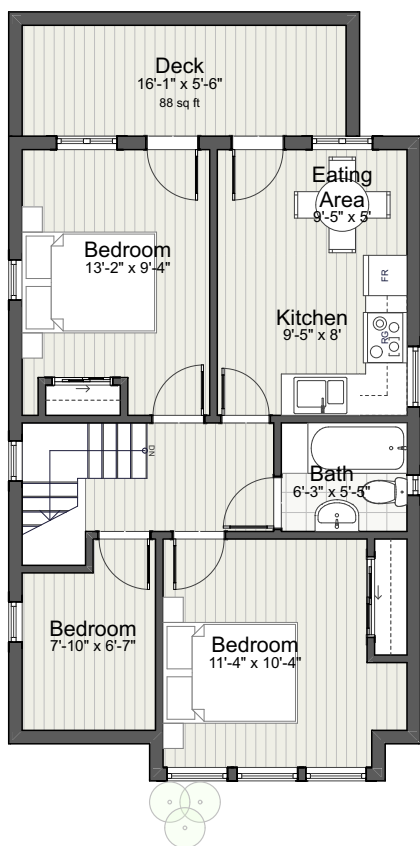
# 861 Prior Street

RICK STONEHOUSE PREC\*  
DWAYNE LAUNT PREC\*  
SHAUN GREGORY PREC\*  
KRYSTIAN THOMAS

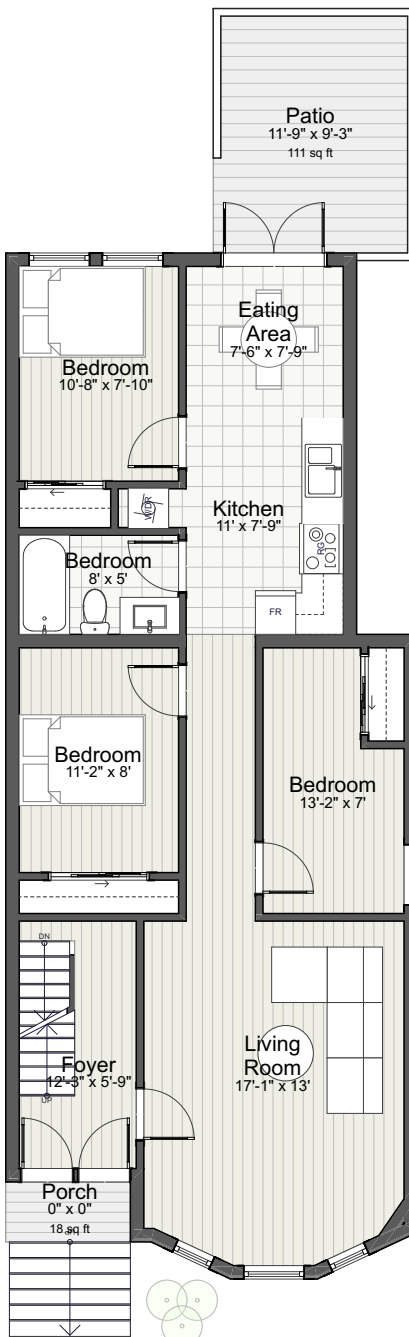
Lower Level	348
Main Level	941
Studio	83
Upper Level	637
<b>Total</b>	<b>2,035 sq ft</b>



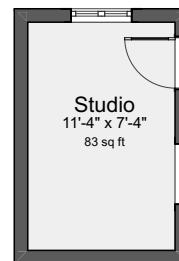
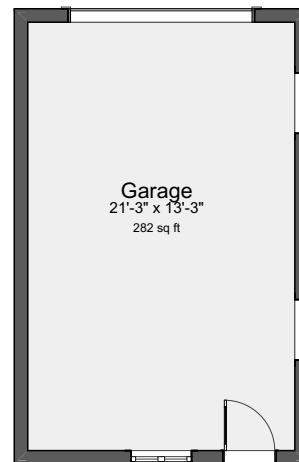
### Basement



### Upper Level



### Main Level



### Garage

Den	128
Garage	282
Patio	111
Porch	18
Storage	149
Studio	83

measurements from interior face of walls; wall thicknesses assumed based on standard wall assemblies; single family dwelling floor areas to exterior wall face; strata property areas as per BOMA Z65.4-2010 multi-unit residential buildings gross method A; which may differ from strata plan; measurements & floor areas for marketing purposes only.

