

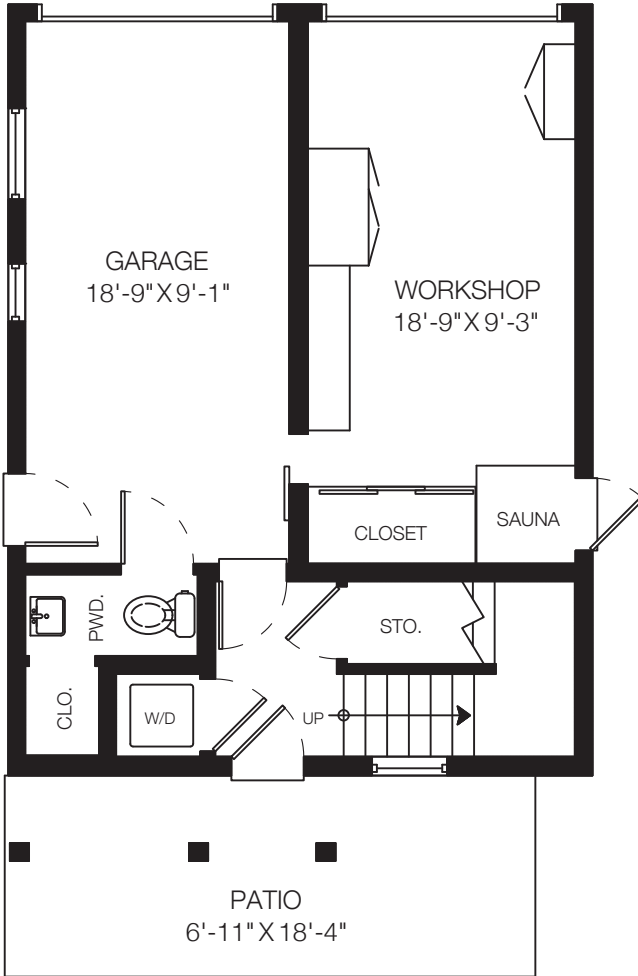
Rick Stonehouse PREC*
Dwayne Launt PREC*
Shaun Gregory PREC*
Krystian Thomas

1132 E Pender St
Vancouver, BC

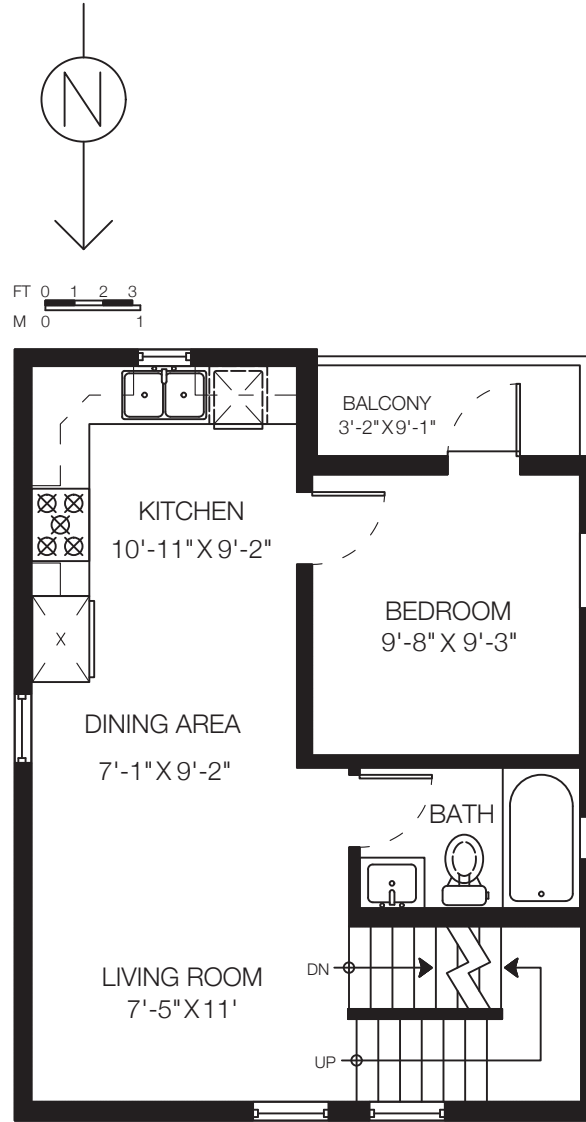
Main Floor	501 SQ.FT.
Upper Floor	284 SQ.FT.
Lower Floor	538 SQ.FT.
Total	1,323 SQ.FT.

Patio	127 SQ.FT.
Balcony	32 SQ.FT.
Balcony	59 SQ.FT.
Workshop	196 SQ.FT.
Garage	194 SQ.FT.
Total Extras	608 SQ.FT.

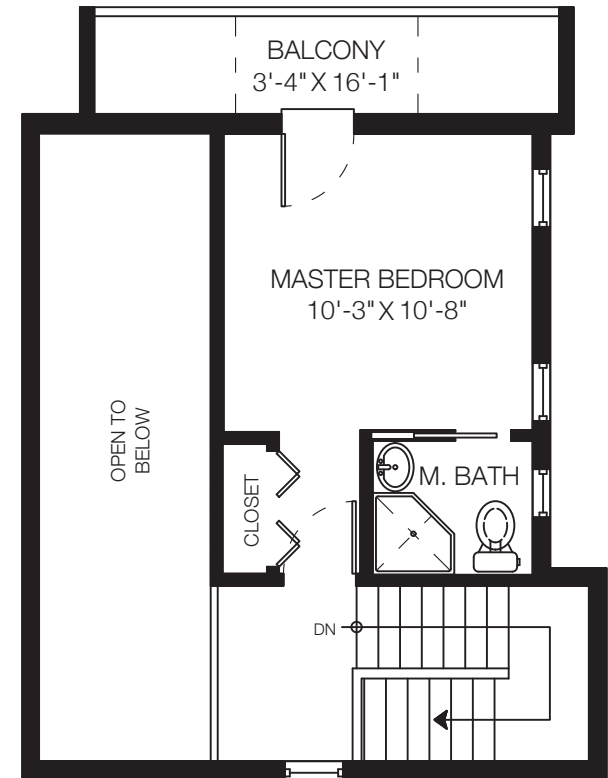
Open To Below 150 SQ.FT.



Lower Floor: 538 Sq.Ft.
Ceiling Height: 7'-7"



Main Floor: 501 Sq.Ft.
Ceiling Height: 8' / Max: 13'-5"



Upper Floor: 284 Sq.Ft.
Ceiling Height: 8'