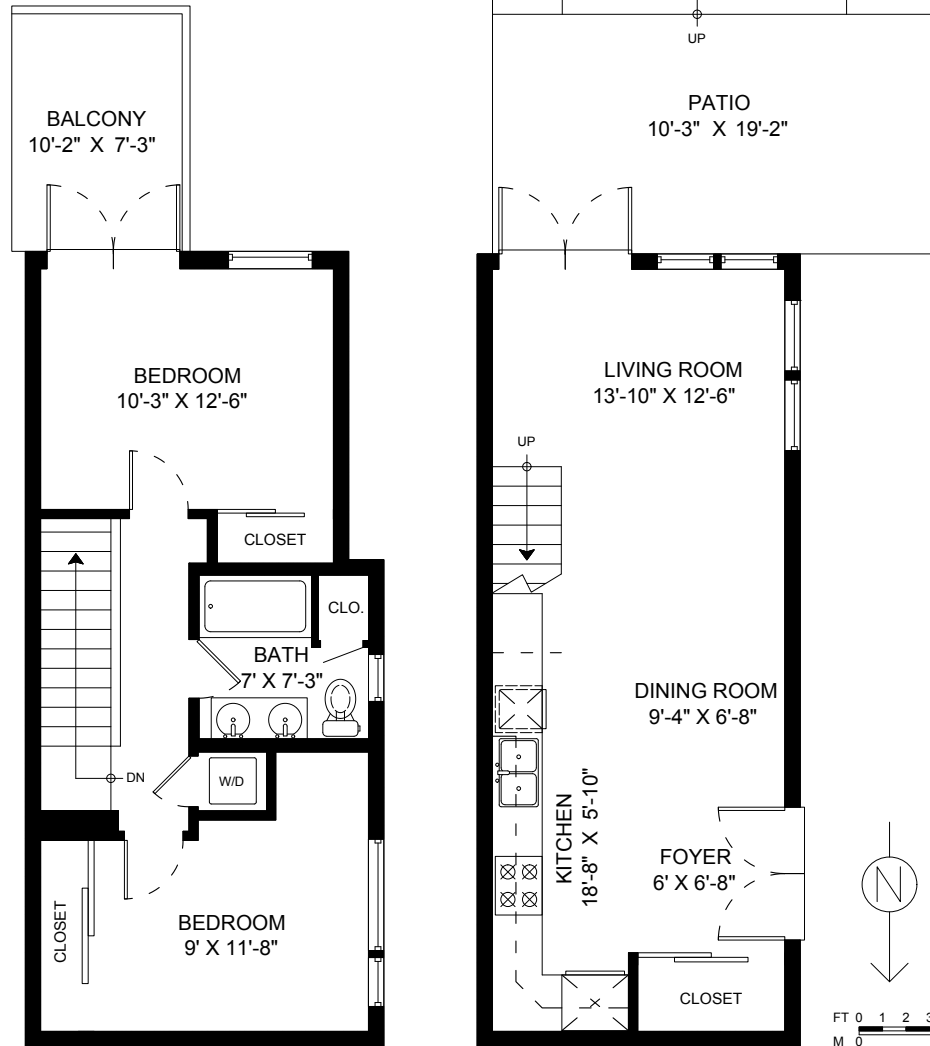


1-1112 E Pender Street Vancouver, BC



Rick Stonehouse PREC*
Dwayne Launt PREC*
Shaun Gregory PREC*
Krystian Thomas



Upper Floor: 499 Sq.Ft.
Ceiling Height: 8'

Main Floor: 466 Sq.Ft.
Ceiling Height: 8'-9"

Main Floor	466 SQ.FT.
Upper Floor	499 SQ.FT.
Total	965 SQ.FT.

Balcony	74 SQ.FT.
Patio	400 SQ.FT.
Total Extras	474 SQ.FT.