



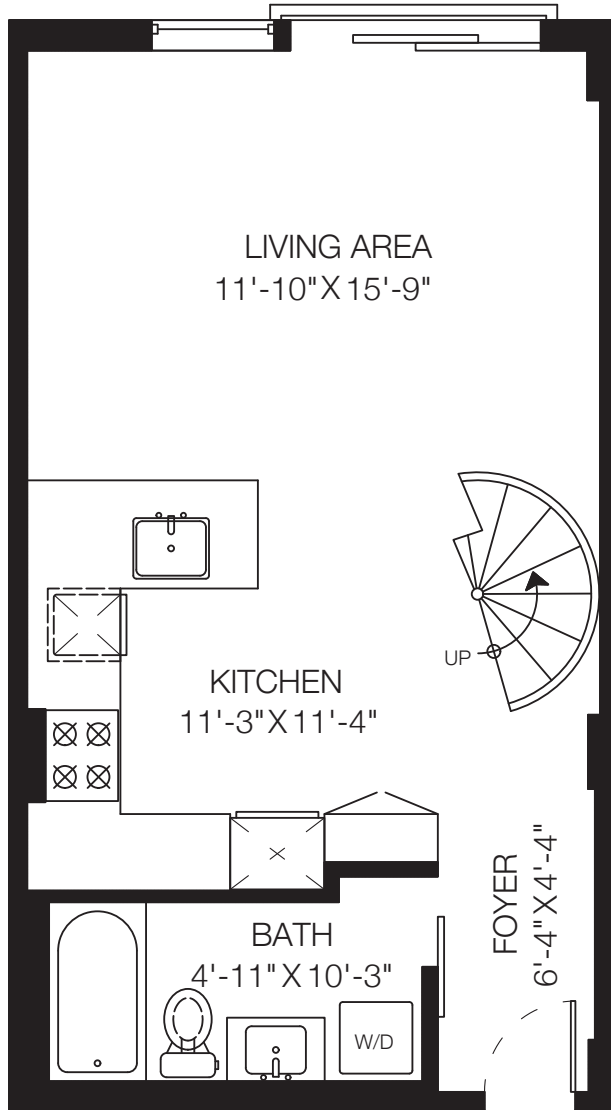
STONEHOUSE
TEAM

Rick Stonehouse PREC*
Dwayne Launt PREC*
Shaun Gregory PREC*
Krystian Thomas

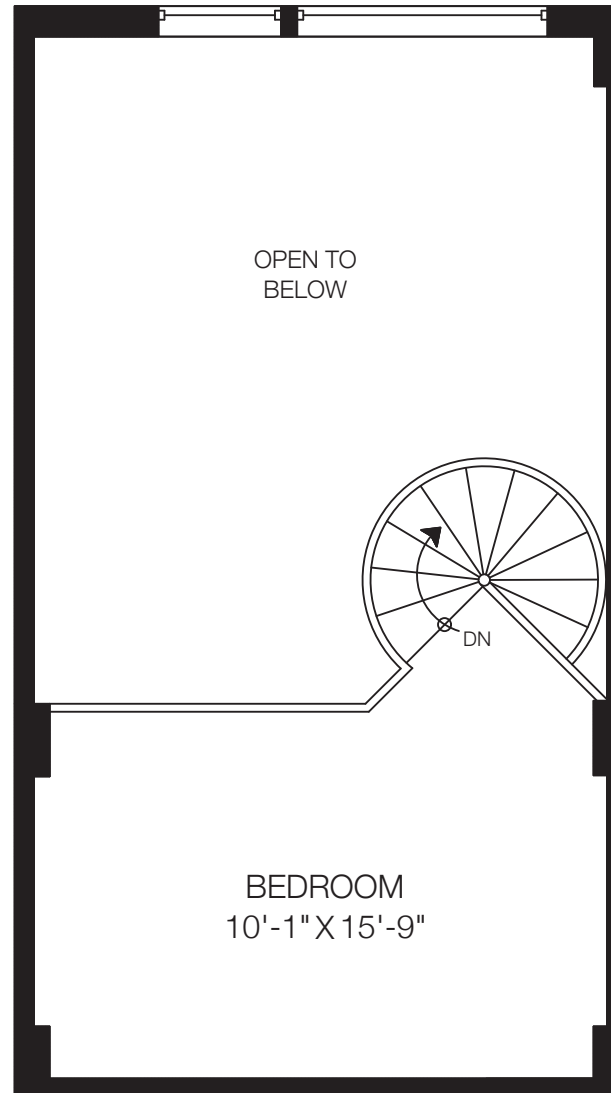
309-228 E 4th Ave
Vancouver, BC

Main Floor	503 SQ.FT.
Upper Floor	219 SQ.FT.
Total	722 SQ.FT.

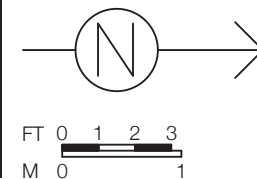
Open To Below 284 SQ.FT.



Main Floor: 503 Sq.Ft. Ceiling
Height: 8' / Max: 17'



Upper Floor: 219 Sq.Ft.
Ceiling Height: 8'-5"



Floor plan not suitable for architectural/construction purposes. ANSI Z765 standard used to calculate square footage. Buyer to verify.