



STONEHOUSE
TEAM

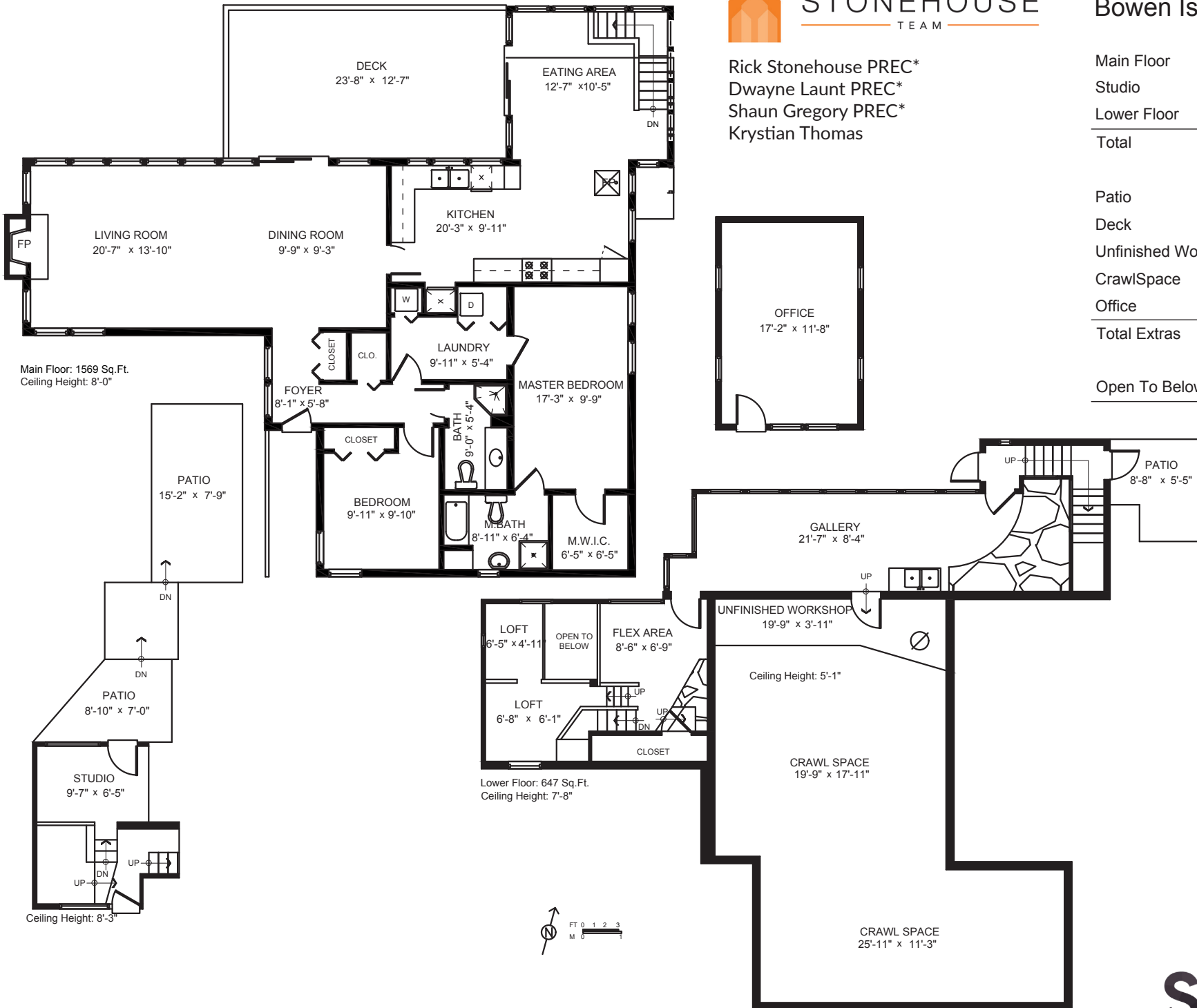
882 Captain's Way
Bowen Island, BC

Rick Stonehouse PREC*
Dwayne Launt PREC*
Shaun Gregory PREC*
Krystian Thomas

Main Floor	1569	SQ.FT.
Studio	151	SQ.FT.
Lower Floor	647	SQ.FT.
Total	2367	SQ.FT.

Patio	282	SQ.FT.
Deck	315	SQ.FT.
Unfinished Workshop	90	SQ.FT.
CrawlSpace	719	SQ.FT.
Office	228	SQ.FT.
Total Extras	1634	SQ.FT.

Open To Below 29 SQ.FT.



Floor plan not suitable for architectural/construction purposes. ANSI Z765 standard used to calculate square footage. Buyer to verify.

