



STONEHOUSE

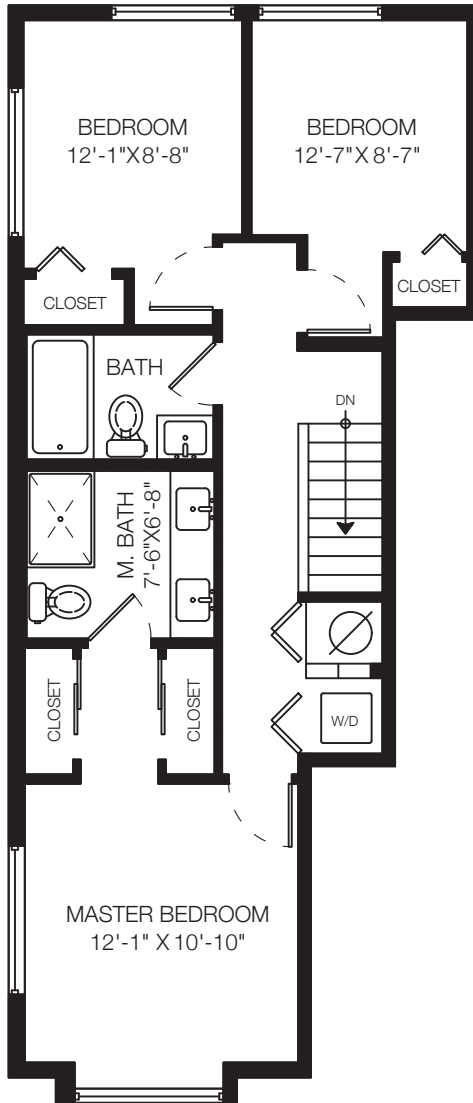
TEAM

Rick Stonehouse PREC*
 Dwayne Launt PREC*
 Shaun Gregory PREC*
 Krystian Thomas

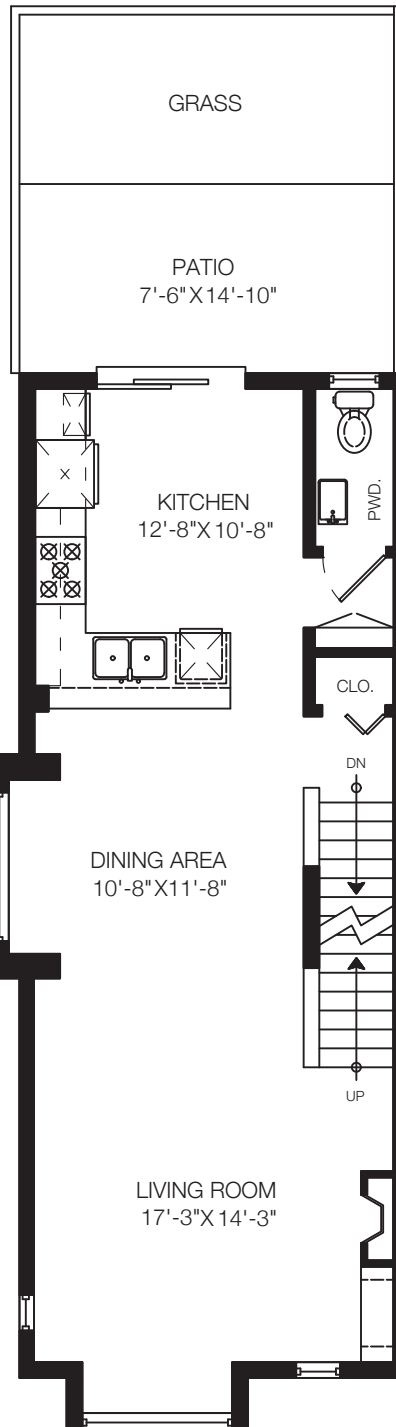
38341 Eaglewind Blvd
 Squamish, BC

Main Floor	635 SQ.FT.
Upper Floor	660 SQ.FT.
Lower Floor	86 SQ.FT.
Total	1381 SQ.FT.

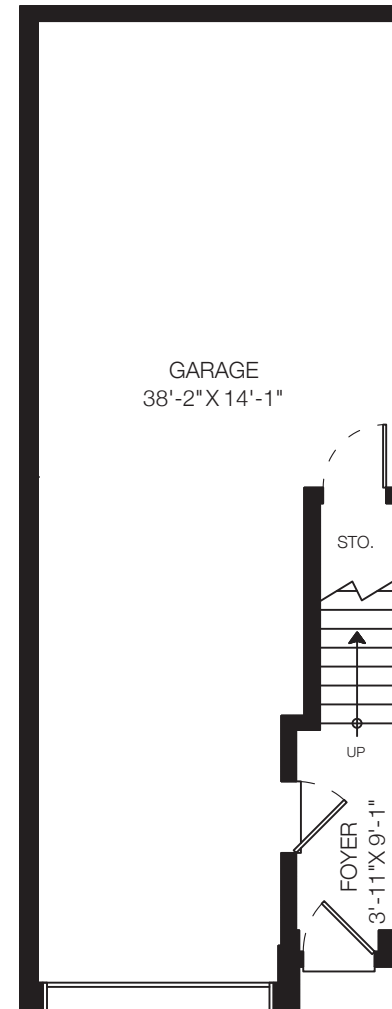
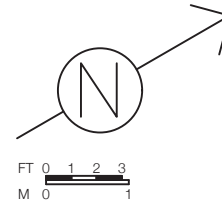
Patio Area	221 SQ.FT.
Garage	517 SQ.FT.
Total Extras	738 SQ.FT.



Upper Floor: 660 Sq.Ft.
 Ceiling Height: 8'



Main Floor: 635 Sq.Ft.
 Ceiling Height: 9'



Lower Floor: 86 Sq.Ft.
 Ceiling Height: 9'

Floor plan not suitable for architectural/construction purposes. ANSI Z765 standard used to calculate square footage. Buyer to verify.

