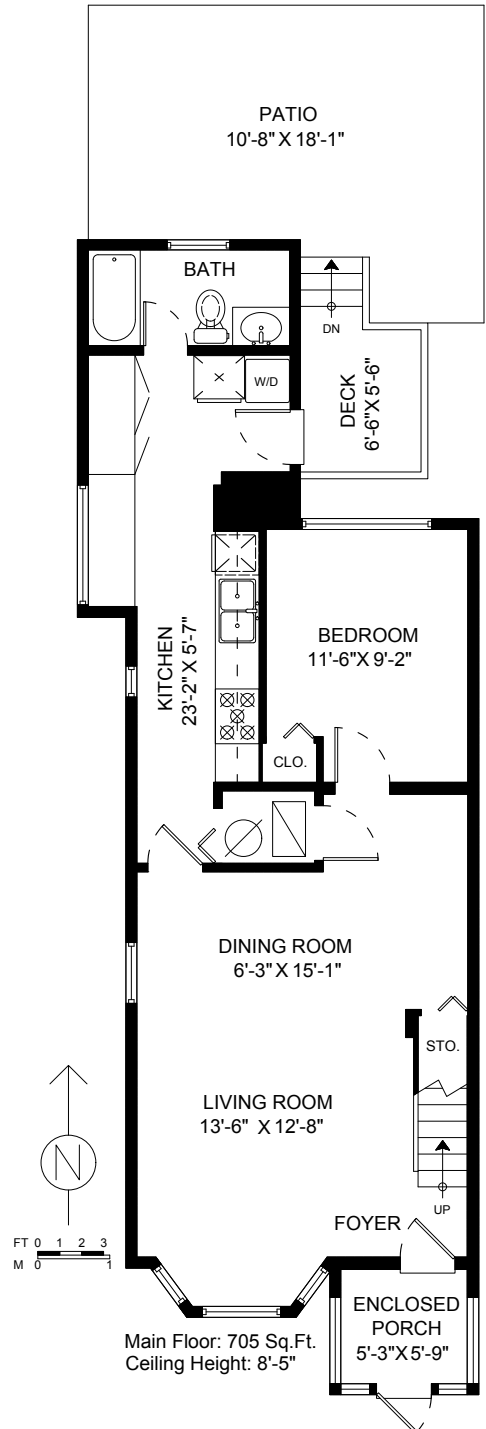


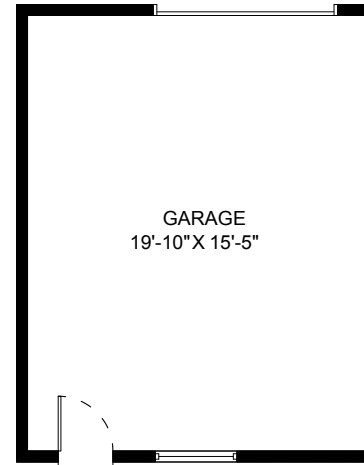
# 1113 E Pender Street Vancouver, BC



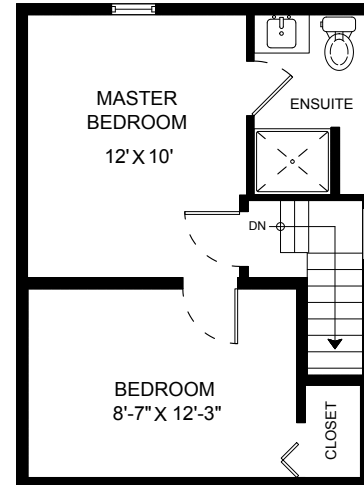
Rick Stonehouse PREC\*  
Dwayne Launt PREC\*  
Shaun Gregory PREC\*  
Krystian Thomas



Main Floor: 705 Sq.Ft.  
Ceiling Height: 8'-5"



GARAGE  
19'-10" X 15'-5"



Upper Floor: 362 Sq.Ft.  
Ceiling Height: 7'-6"

Main Floor	705 SQ.FT.
Upper Floor	362 SQ.FT.
<b>Total</b>	<b>1067 SQ.FT.</b>

Patio	216 SQ.FT.
Deck	44 SQ.FT.
Enclosed Porch	39 SQ.FT.
Garage	343 SQ.FT.
<b>Total Extras</b>	<b>642 SQ.FT.</b>