

3750 Commercial Street Vancouver, BC



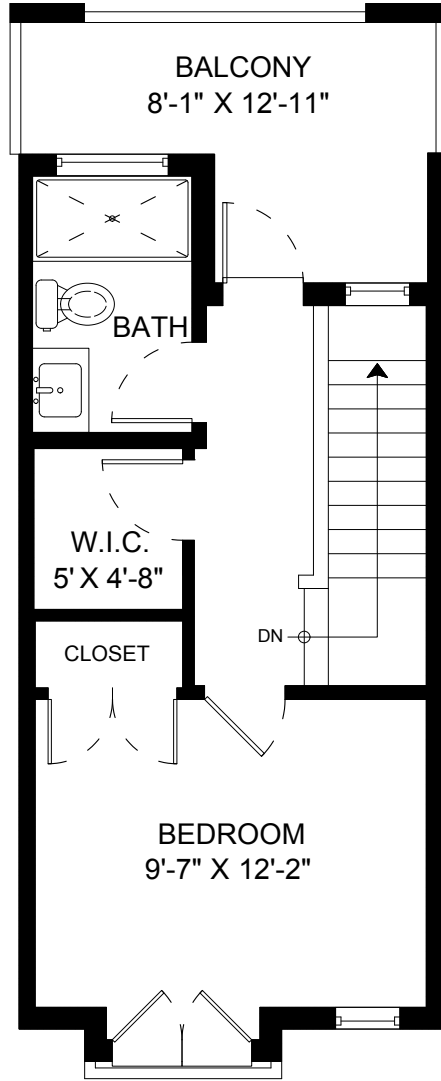
STONEHOUSE
TEAM

Rick Stonehouse PREC*
Dwayne Launt PREC*
Shaun Gregory PREC*
Krystian Thomas

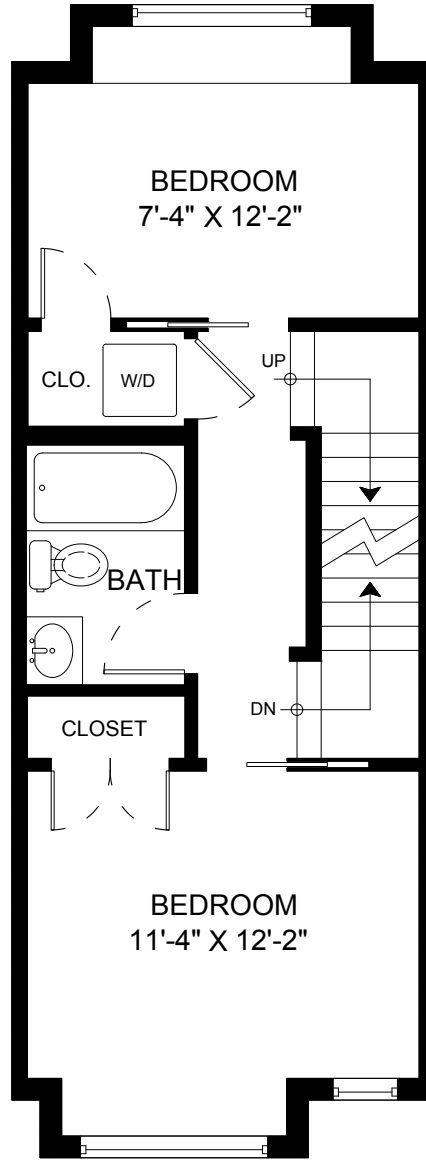
| | |
|--------------|--------------------|
| Main Floor | 436 SQ.FT. |
| Upper Floor | 440 SQ.FT. |
| Top Floor | 335 SQ.FT. |
| Entry Floor | 60 SQ.FT. |
| Total | 1271 SQ.FT. |

| | |
|---------------------|-------------------|
| Balcony | 88 SQ.FT. |
| Upper Balcony | 76 SQ.FT. |
| Total Extras | 164 SQ.FT. |

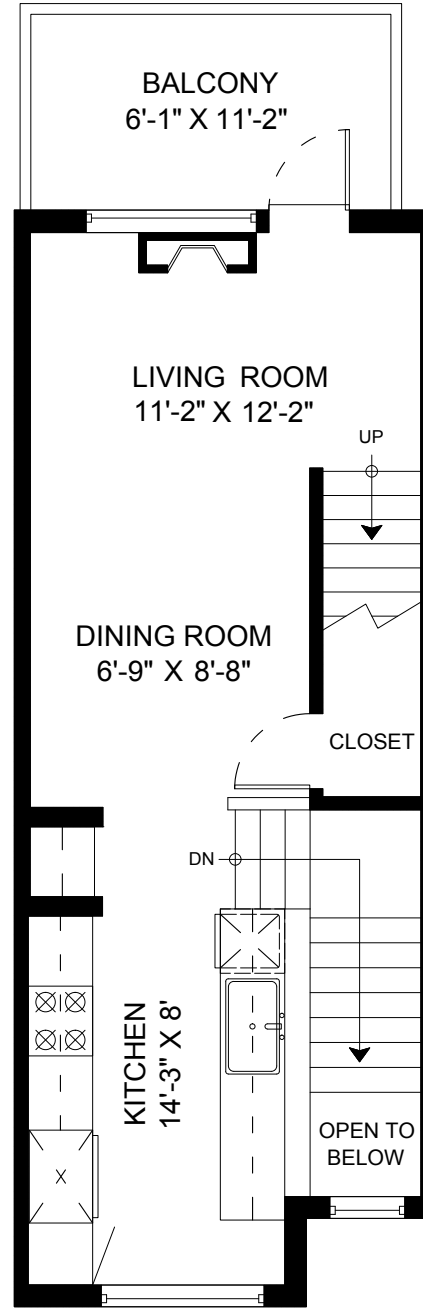
Open To Below 11 SQ.FT.



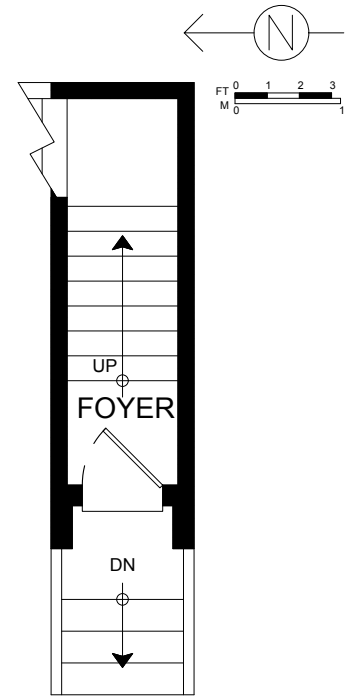
Top Floor: 335 Sq.Ft.
Ceiling Height: 8'-2"



Upper Floor: 440 Sq.Ft.
Ceiling Height: 8'



Main Floor: 436 Sq.Ft.
Ceiling Height: 9'



Entry: 60 Sq.Ft.

