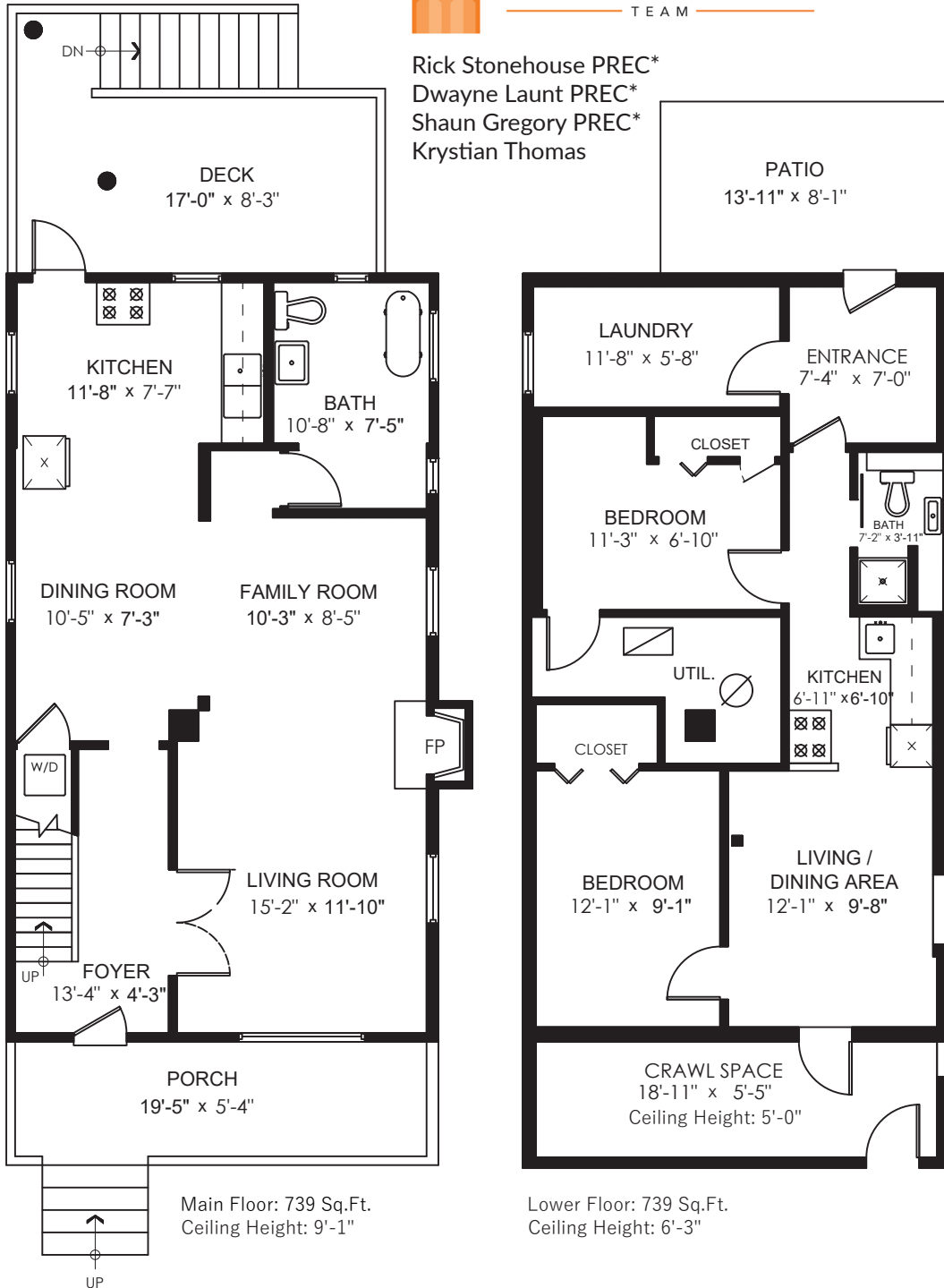




STONEHOUSE TEAM

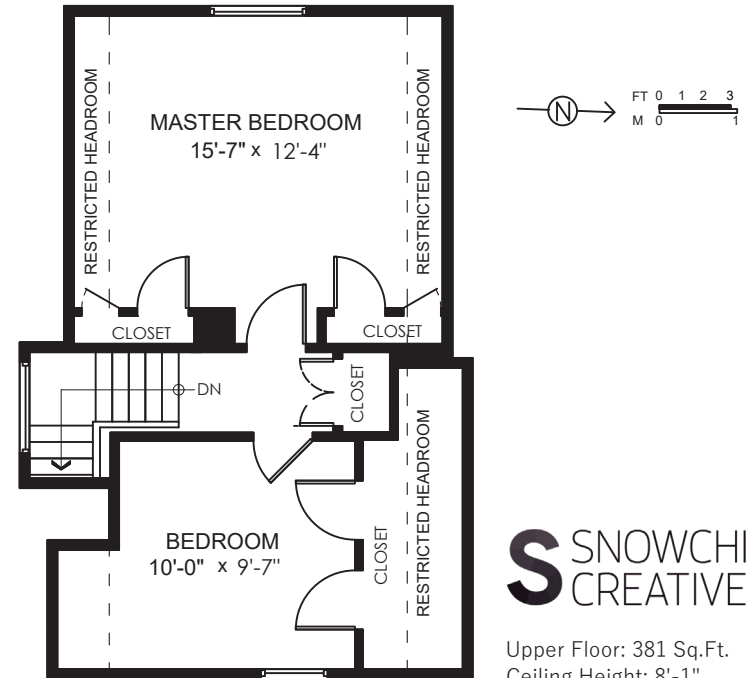
Rick Stonehouse PREC*
Dwayne Launt PREC*
Shaun Gregory PREC*
Krystian Thomas

1143 Semlin Dr Vancouver, BC



Main Floor	739 SQ FT
Upper Floor	381 SQ FT
Restricted Headroom	108 SQ FT
Lower Floor	739 SQ FT
Total	1,967 SQ FT

Patio	113 SQ FT
Deck	173 SQ FT
Porch	119 SQ FT
Crawl Space	122 SQ FT
Total	527 SQ FT



Floor plan not suitable for architectural/construction purposes. ANSI Z765 standard used to calculate square footage. Buyer to verify.



Upper Floor: 381 Sq.Ft.
Ceiling Height: 8'-1"