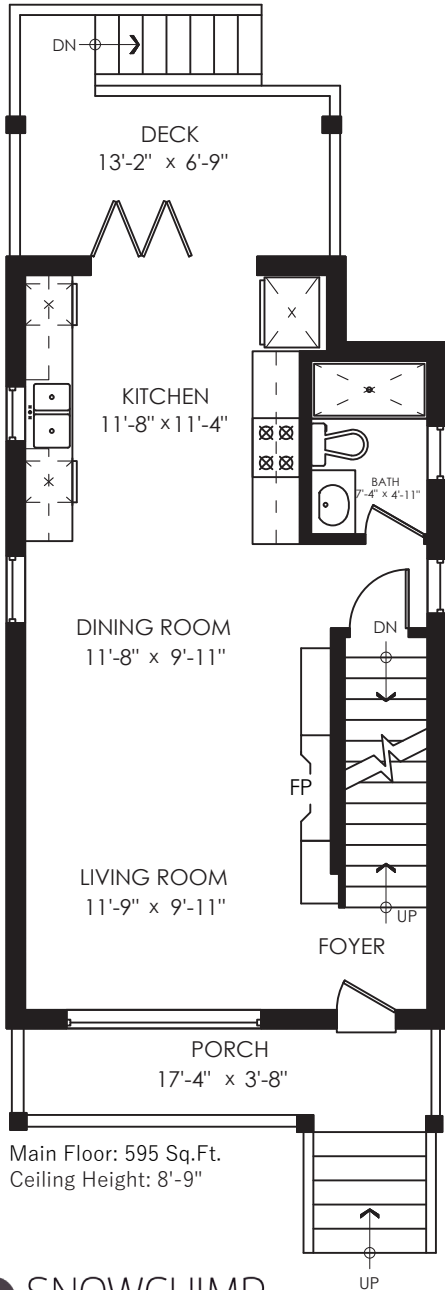
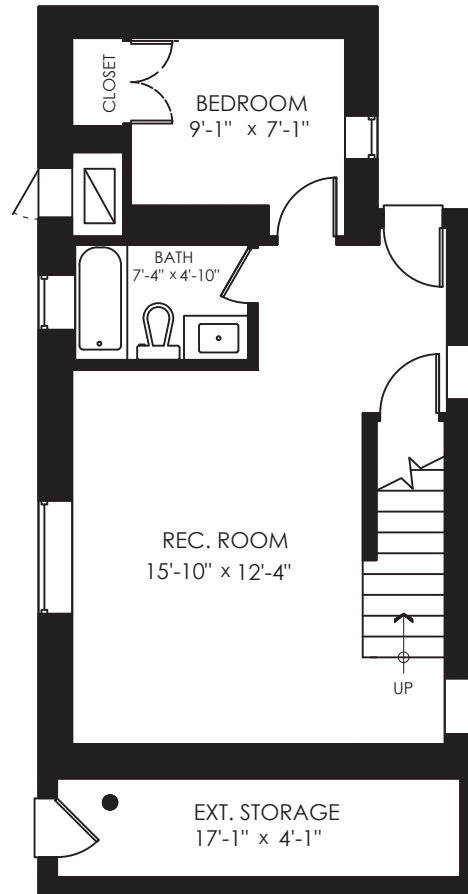


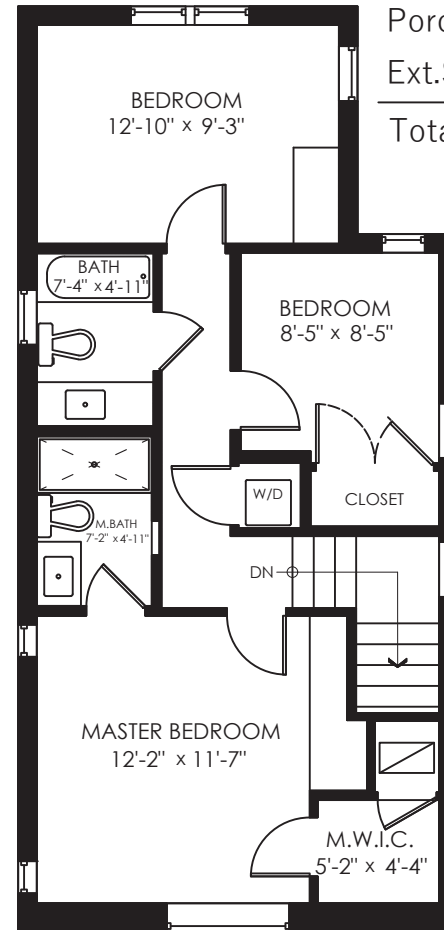
1027 Keefer St. Vancouver, BC



Main Floor: 595 Sq.Ft.
Ceiling Height: 8'-9"



Lower Floor: 574 Sq.Ft.
Ceiling Height: 8'-4"



Upper Floor: 691 Sq.Ft.
Ceiling Height: 8'-2"

Main Floor	595 SQ.FT.
Upper Floor	691 SQ.FT.
Lower Floor	574 SQ.FT.
Total	1860 SQ.FT.

Deck	114 SQ.FT.
Porch	77 SQ.FT.
Ext.Storage	92 SQ.FT.
Total Extras	283 SQ.FT.



STONEHOUSE
TEAM

Rick Stonehouse PREC*
Dwayne Launt PREC*
Shaun Gregory PREC*
Krystian Thomas

