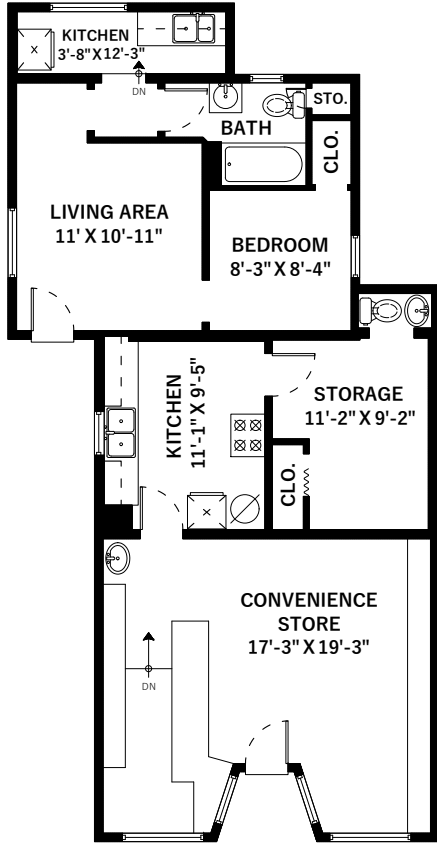


# 700 Vernon Drive Vancouver, BC

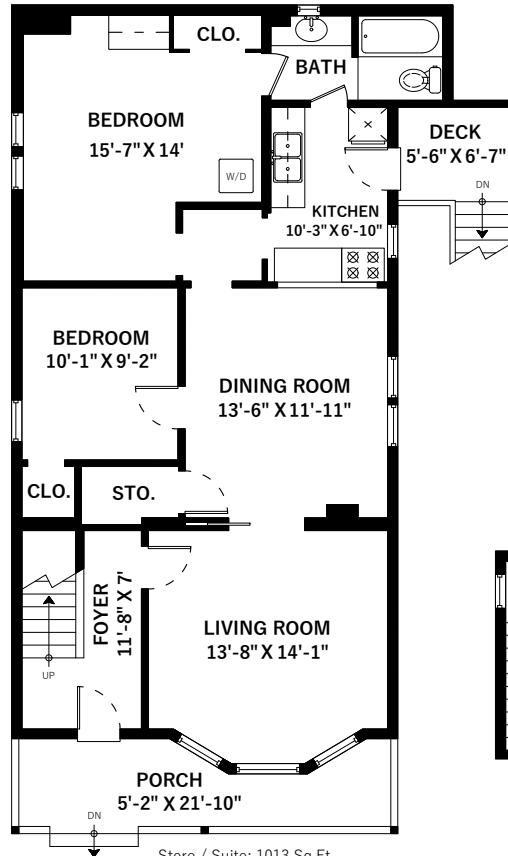
Main Floor	1013 SQ.FT.
Upper Floor	595 SQ.FT.
<b>Total</b>	<b>1608 SQ.FT.</b>

Deck	38 SQ.FT.
Porch	110 SQ.FT.
<b>Total Extras</b>	<b>148 SQ.FT.</b>

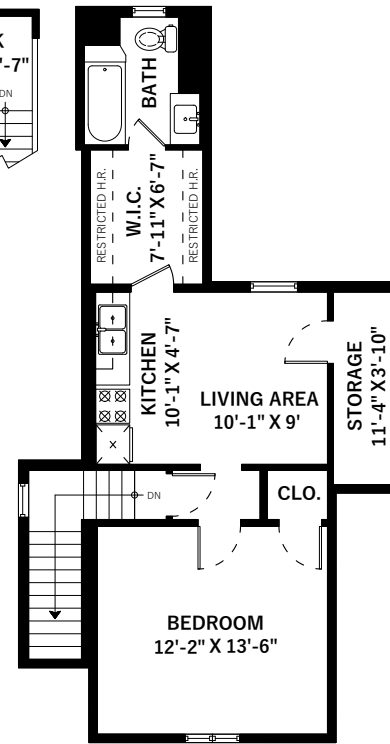
Suite	<b>374 SQ.FT.</b>
Convenience Store	<b>596 SQ.FT.</b>
Lower Floor Unfinished	620 SQ.FT.
Restricted Headroom	29 SQ.FT.



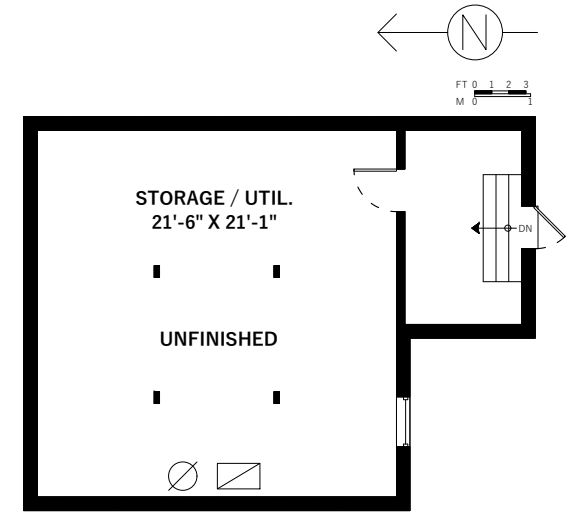
Store / Suite: 970 Sq.Ft.  
Ceiling Height: 8'-3"



Store / Suite: 1013 Sq.Ft.  
Ceiling Height: 9'



Upper Floor: 595 Sq.Ft.  
Ceiling Height: 8'-4"



Lower Floor Unfinished: 620 Sq.Ft.  
Ceiling Height: 5'-9"

