

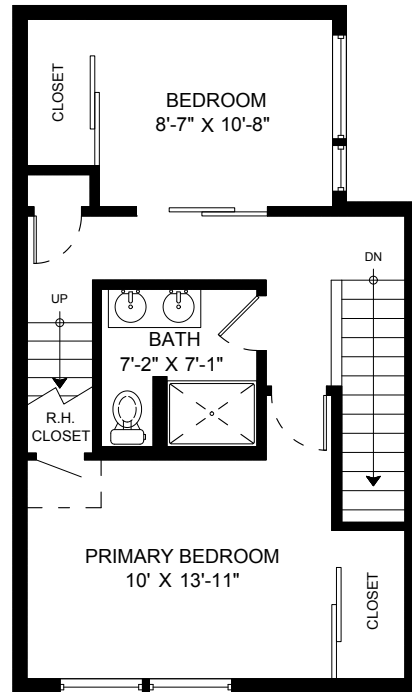
2-1112 E Pender Street Vancouver, BC



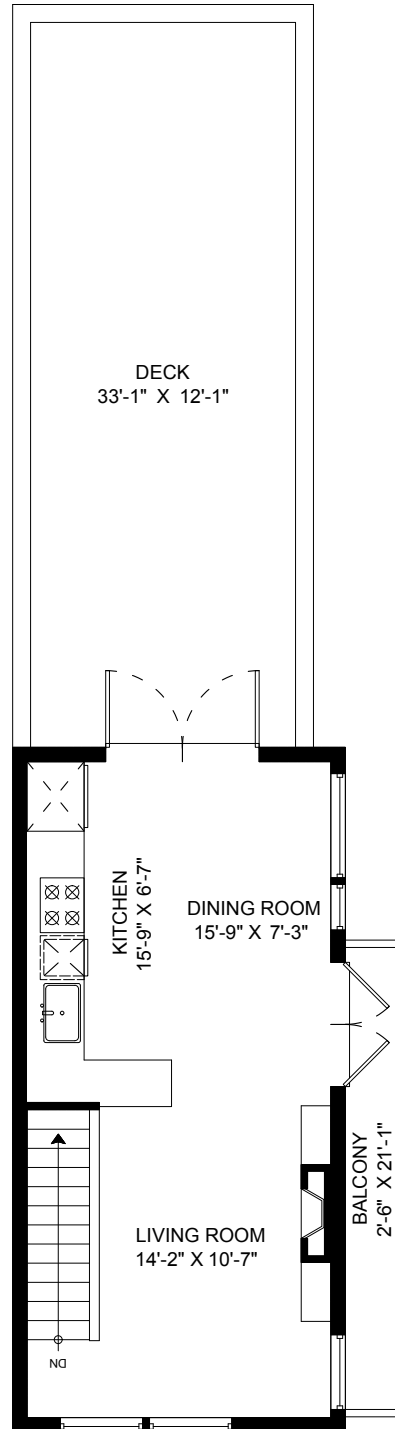
Rick Stonehouse PREC*
Dwayne Launt PREC*
Shaun Gregory PREC*
Krystian Thomas



Main Floor: 380 Sq.Ft.
Ceiling Height: 8'-9"



Upper Floor: 550 Sq.Ft.
Ceiling Height: 8'-5"



Top Floor: 474 Sq.Ft.
Ceiling Height: 8' Max: 9'

Main Floor	380 SQ.FT.
Upper Floor	550 SQ.FT.
Top Floor	474 SQ.FT.
Total	1404 SQ.FT.
Deck	400 SQ.FT.
Porch	55 SQ.FT.
Balcony	53 SQ.FT.
Garage	371 SQ.FT.
Total Extras	879 SQ.FT.

