



6215 GROVELAND DRIVE

NANAIMO, BC

3 Bedroom, 3 Bathroom Eagle Point Home

\$669,900

6215 GROVELAND DRIVE

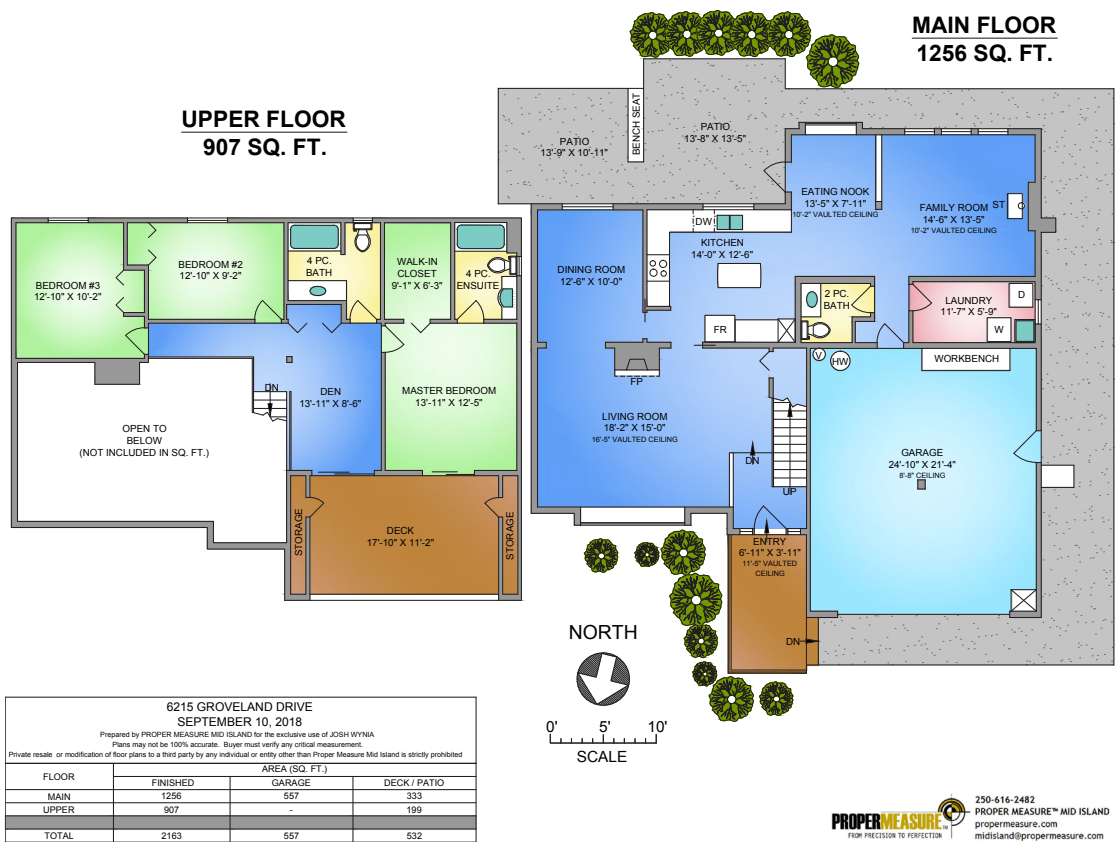
1 80-degree ocean view, custom west coast contemporary home in the desirable Eagle Point neighbourhood of North Nanaimo. This well-kept 3 bedroom, 3 bathroom home offers ocean and coastal mountain views from both levels, loads of natural light and soothing ocean breezes. Watch cruise ships and ferries pass from the 200 sq. ft. top deck.

The main level has a spacious open concept oak kitchen with island and eating nook, cozy family and living rooms with gas fireplaces, and access to landscaped back yard and patio - a private oasis to enjoy a tasty beverage, entertain guests and host family BBQ's. Bedrooms and den/loft upstairs include a large master with deck access and updated 4 pc ensuite.

Roof and skylights are only 2 years old, new composite front deck, and exterior was repainted last year. 557 sq. ft. garage! Conveniently located next to Groveland Park, walking distance to McGirr & Dover Bay schools, sandy beaches and a short drive to Costco, shopping, clinics, restaurants and grocery stores.



6215 GROVELAND DRIVE



6215 GROVELAND DRIVE

List Price:	\$669,900	MLS #:	445749
Property Type:	Single Family	Catchment:	McGirr / Dover Bay
Area:	North Nanaimo	Heating:	Radiant
Bedrooms:	3	Features:	Garden Area, Thermal Windows, Built In Vacuum.
Bathrooms:	3		
Square Footage:	2,163	Amenities:	Can Be Rented, Family Oriented, View - Mountain View, View - Ocean, Shopping Nearby, Recreation Nearby, Landscaped, Underground Services, Pets Allowed.
Lot Size (Sq. Ft.):	7,104		
Year Built:	1990		



JOSH WYNIA

REALTOR®

460 REALTY

#202-1551 Estevan Rd.
Nanaimo, BC V9S 3Y3

P: (250) 591-4601
C: (250) 741-6477

E: jwynia@460realty.com

