

TIM WRAY

REAL ESTATE SERVICES

604.781.5692 tim@timwray.ca
www.timwray.ca

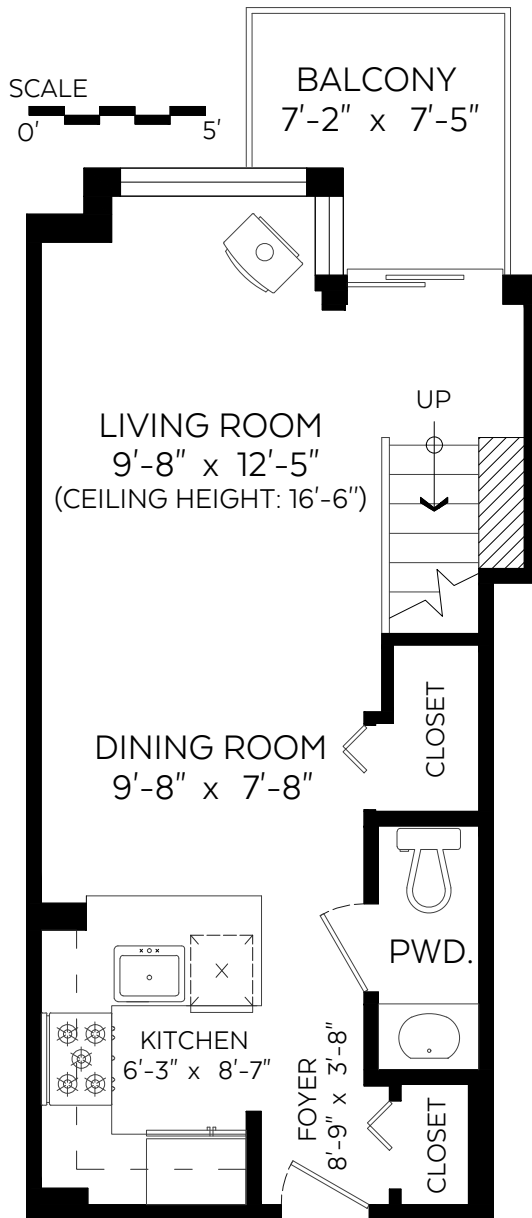
#404-10 Renaissance Square,
New Westminster, B.C.

| | |
|----------------|-------------------|
| Main Floor*: | 407 sq.ft. |
| Upper Floor*: | 308 sq.ft. |
| Total*: | 715 sq.ft. |
| Open to Below: | 166 sq.ft. |

Auxiliary Area

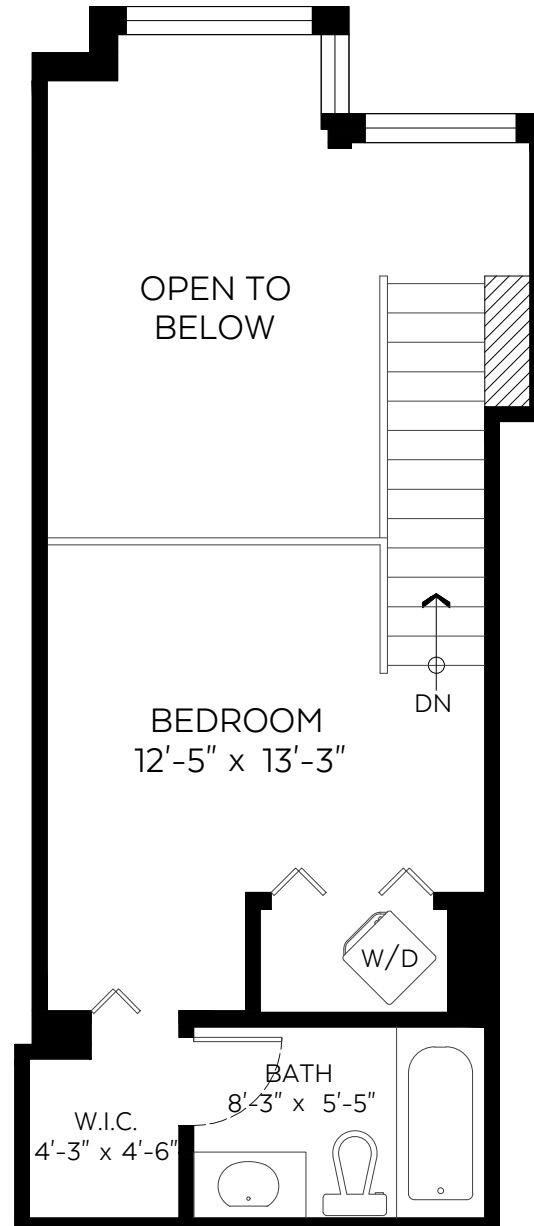
| | |
|----------|-----------|
| Balcony: | 45 sq.ft. |
|----------|-----------|

*AS PER STRATA PLAN



Main Floor Plan

Floor Area*: 407 sq.ft.



Upper Floor Plan

Floor Area*: 308 sq.ft.