

204-720 Carnarvon St

New Westminster

TIM WRAY

REAL ESTATE SERVICES

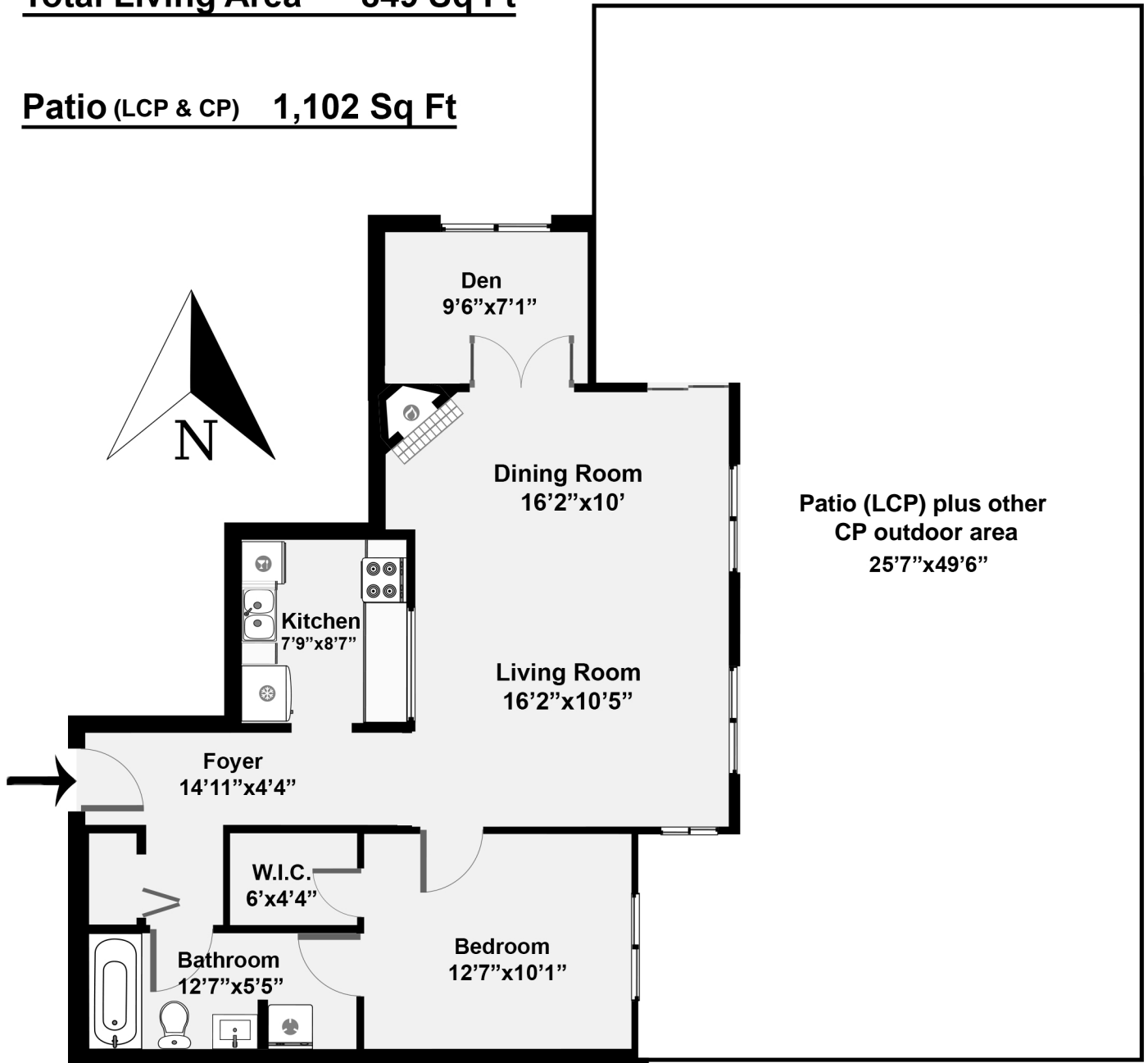
604.781.5692

tim@timwray.ca

www.timwray.ca

Total Living Area 849 Sq Ft

Patio (LCP & CP) 1,102 Sq Ft



THIS FLOORPLAN IS PROVIDED WITHOUT WARRANTY OF ANY KIND. ROOMVU AND ITS CONTRACTOR DISCLAIMS ANY WARRANTY INCLUDING, WITHOUT LIMITATION, SATISFACTORY QUALITY OR ACCURACY OF DIMENSIONS. FLOOR PLAN IS FOR VISUAL MARKETING PURPOSES AND IS NOT GUARANTEED.

0' 4' 8' 12' 16' 1:89