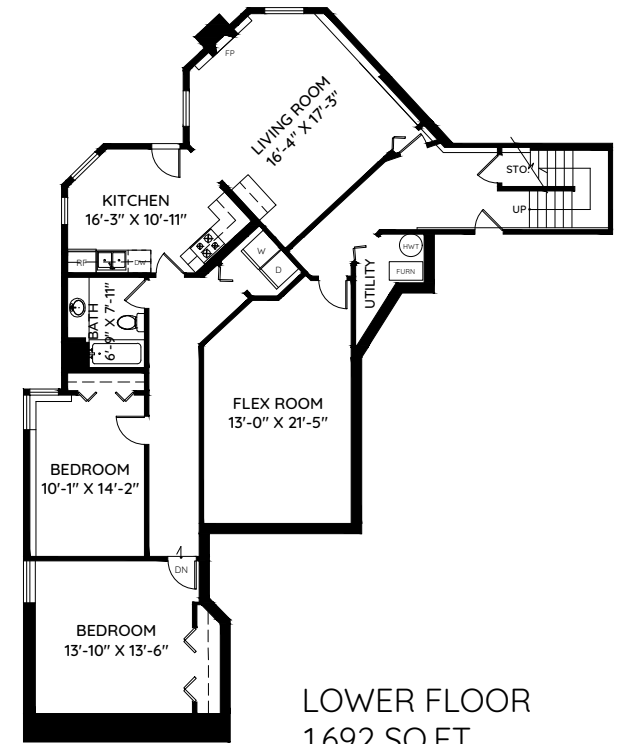
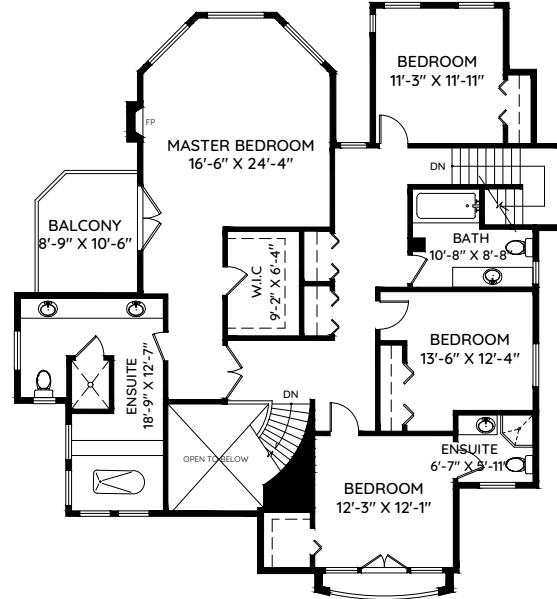
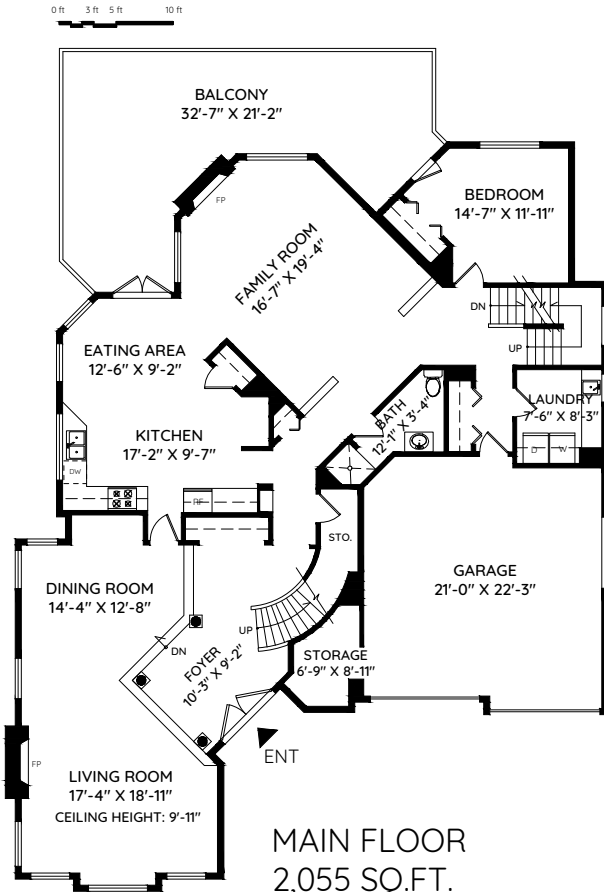


2757 CHELSEA COURT

WEST VANCOUVER, BC

| | | | |
|--------------|---------------------|--------------|---------------------|
| MAIN | 2,055 SQ.FT. | GARAGE | 466 SQ.FT. |
| UPPER | 1,662 SQ.FT. | BALCONY | 452 SQ.FT. |
| LOWER | 1,692 SQ.FT. | BALCONY | 94 SQ.FT. |
| TOTAL | 5,409 SQ.FT. | TOTAL | 1,012 SQ.FT. |

WHITTALL
REAL ESTATE TEAM



The floor plan and the measurements are approximate and are to be used for advertising usage only. Not suitable for architectural or construction. E&OE. © 2019 KEYPLAN Measuring Inc.