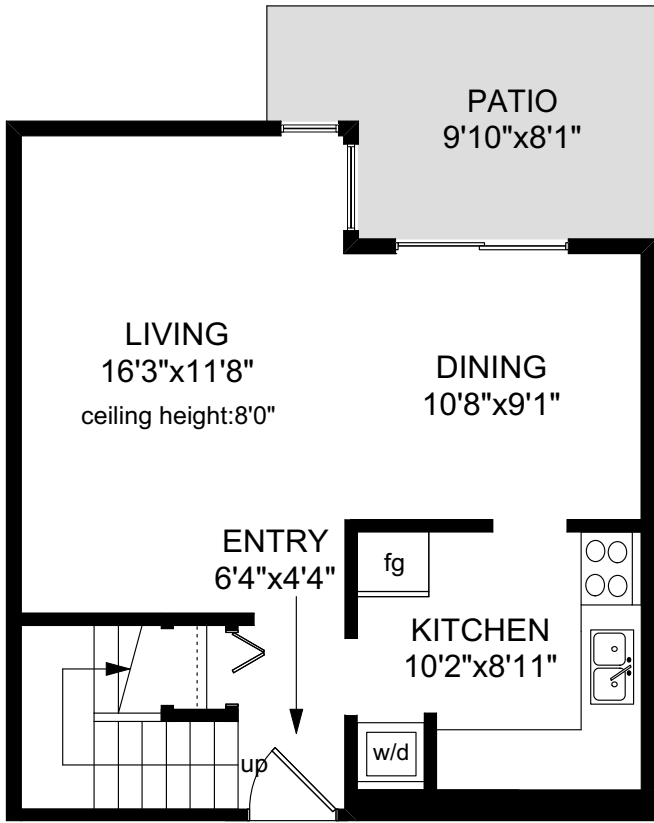

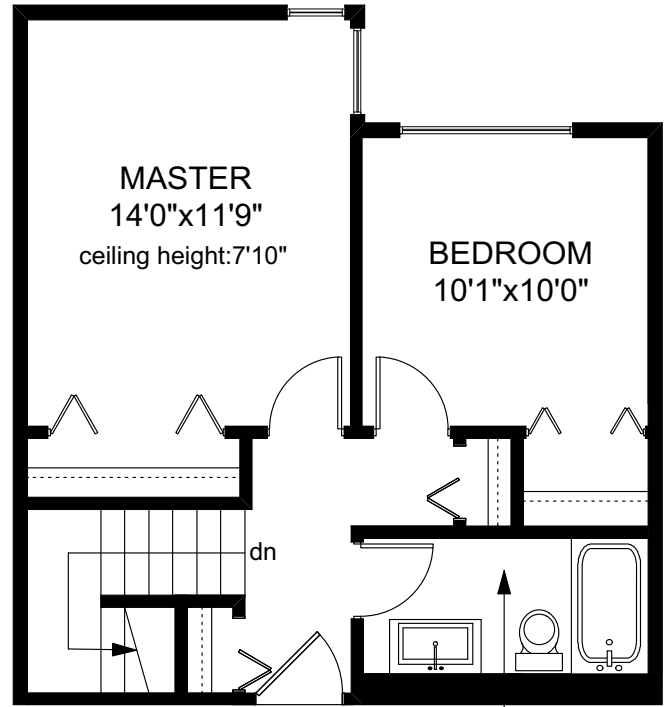


105 -1366 HILLSIDE AVENUE

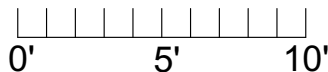
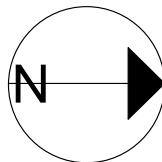


 MAIN FLOOR
483 SQ.FT



 UPPER FLOOR
483 SQ.FT
4-pce
10'2"x4'11"

	FINISHED SQ. FT.	UNFINISHED SQ. FT.	TOTAL SQ. FT.
MAIN	483	0	483
UPPER	483	0	483
TOTAL	966	0	966
PATIO	0	92	92



PREPARED FOR THE EXCLUSIVE USE OF
NICO CRAVEIRO/JASON CRAVEIRO OF
ROYAL LEPAGE COAST CAPITAL REALTY

MEASURED ON: 04/25/16
DRAWING FILE: 13536

Tafmeasure VICTORIA, B.C.
Ph. 883.8894
www.tafmeasure.com