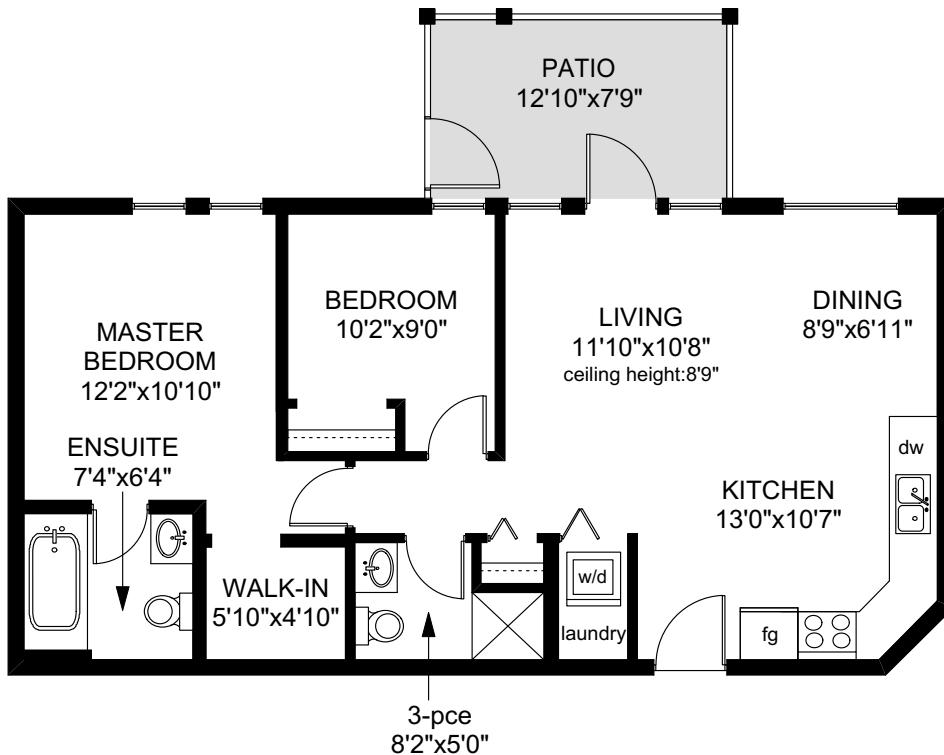
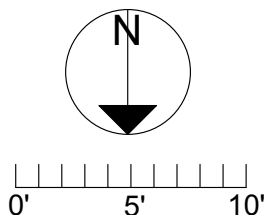


103 - 1156 COLVILLE ROAD



UNIT 103
804 SQ.FT

	FINISHED SQ. FT.	UNFINISHED SQ. FT.	TOTAL SQ. FT.
UNIT 103	804	0	804
TOTAL	804	0	804
PATIO	0	100	100



PREPARED FOR THE EXCLUSIVE USE OF
JASON CRAVEIRO/ NICO CRAVEIRO OF
ROYAL LEPAGE COAST CAPITAL REALTY

MEASURED ON: 04/19/16
DRAWING FILE: 13520

Tafe Measure VICTORIA, B.C.
Ph. 883.8894
www.tafemeasure.com