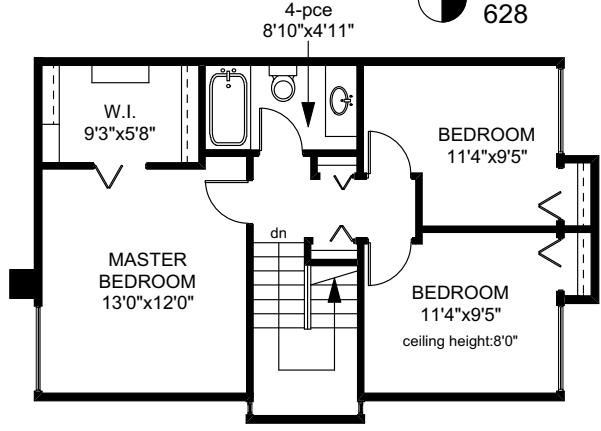
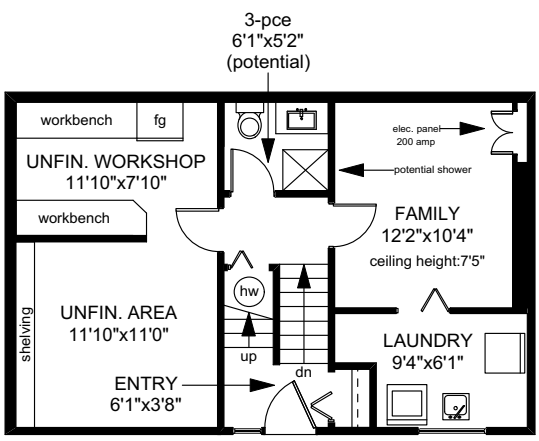
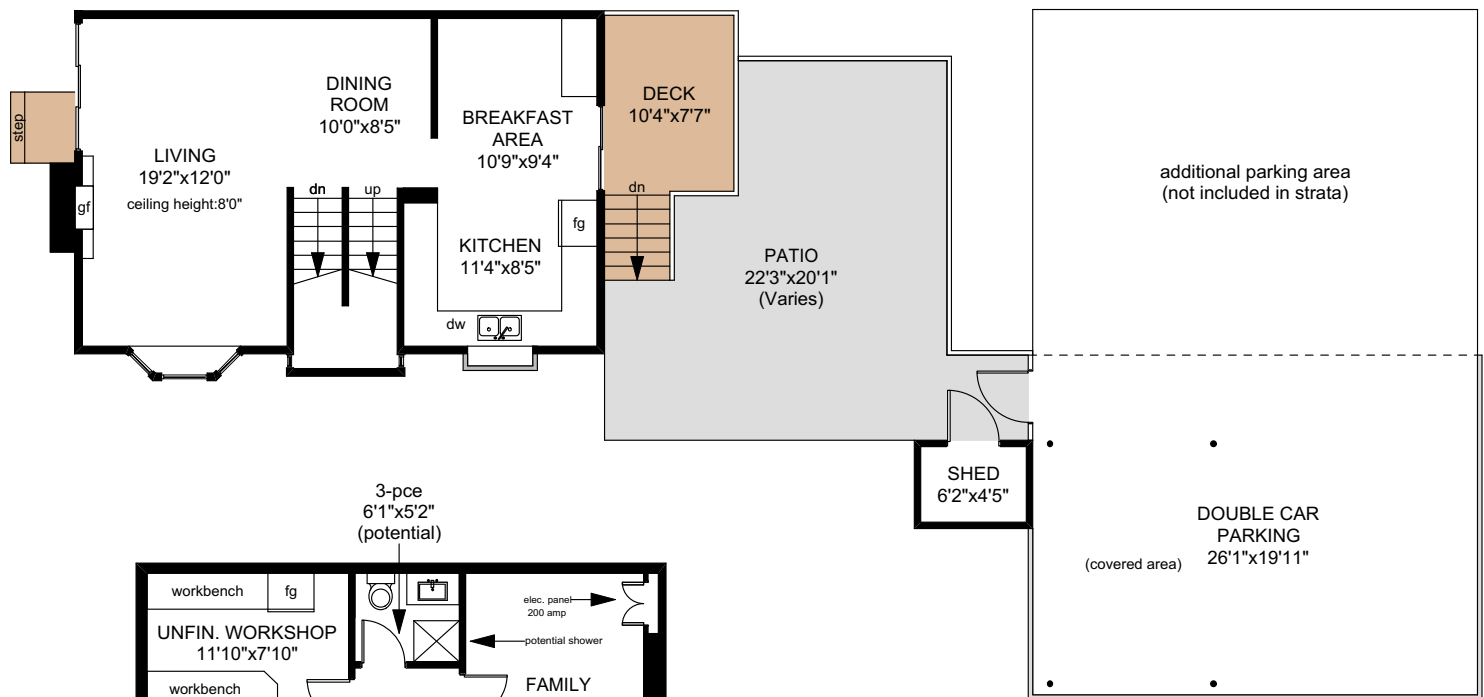


72 - 3987 GORDON HEAD ROAD

UPPER FLOOR
628 SQ.FT

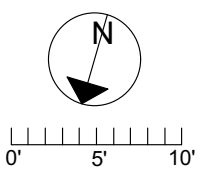


MAIN FLOOR
628 SQ.FT



LOWER FLOOR
593 SQ.FT

	FINISHED SQ. FT.	UNFINISHED SQ. FT.	TOTAL SQ. FT.
MAIN	628	0	628
UPPER	628	0	628
LOWER	352	241	593
TOTAL	1608	241	1849
SHED	0	36	36
PARKING	0	519	519
DECK	0	78	78
PATIO	0	390	390



PREPARED FOR THE EXCLUSIVE USE OF
JASON CRAVEIRO/NICO CRAVEIRO OF
ROYAL LEPAGE COAST CAPITAL REALTY

MEASURED ON: 03/06/17
DRAWING FILE: 13803

Taf Measure VICTORIA, B.C.
Ph. 883.8894
www.tafemeasure.com