

Michelle Vaughan

Royal LePage Sussex WV

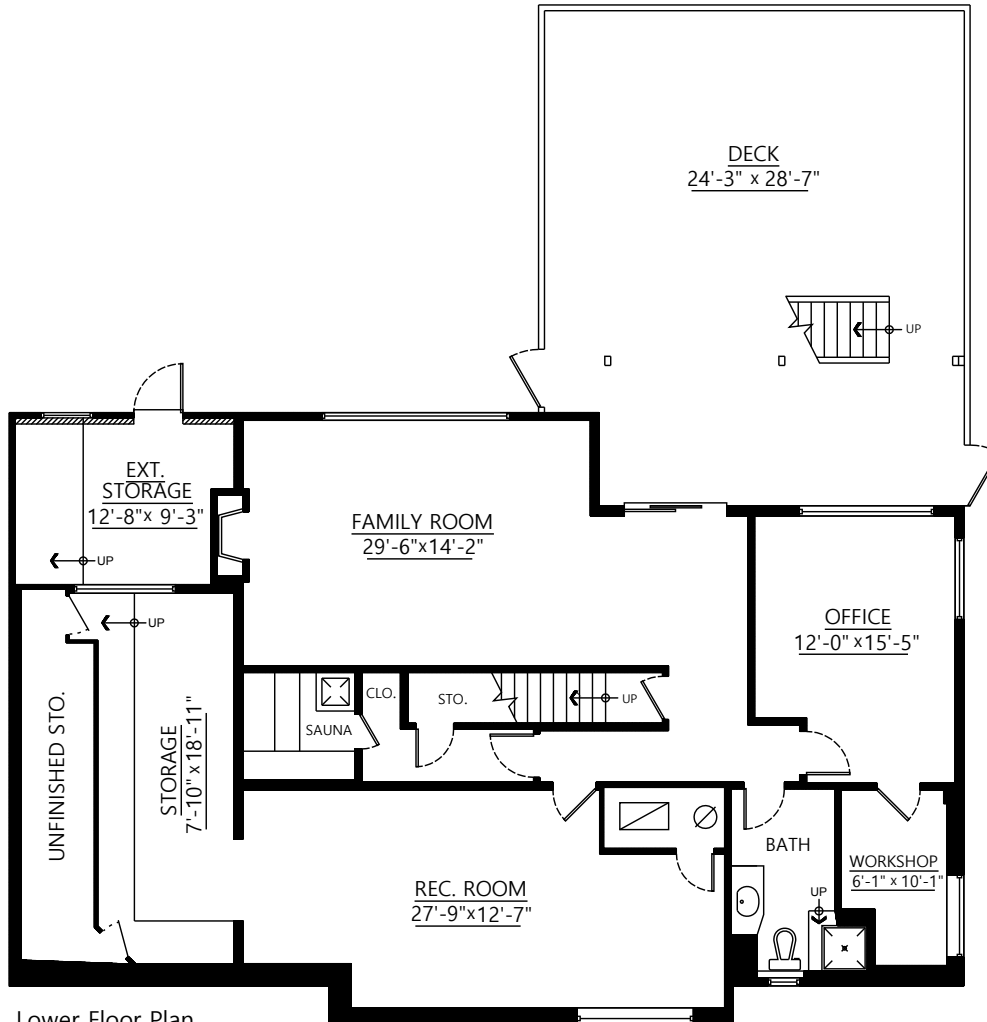
604-839-3000



86 Bonnymuir Drive,
West Vancouver, B.C.

Main Floor: 1,773 sq.ft.
 Finished Lower Floor: 1,523 sq.ft.
 Unfinished Lower Floor: 113 sq.ft.
 Total: 3,409 sq.ft.

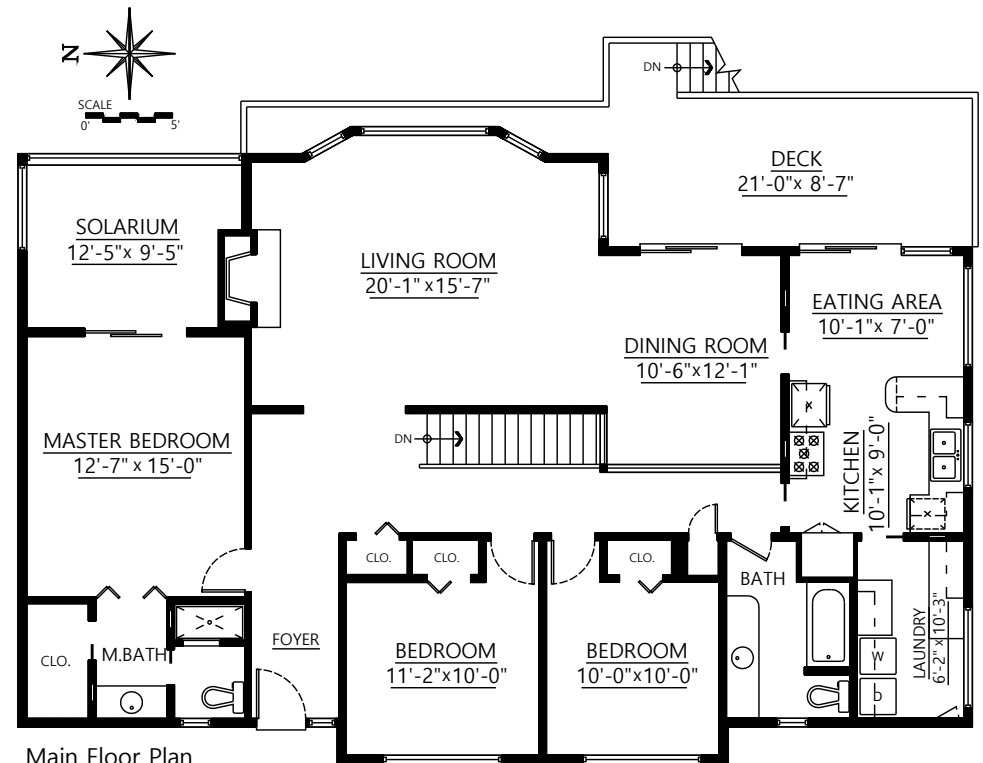
Decks: 950 sq.ft.
 Exterior Storage: 121 sq.ft.



Lower Floor Plan

Finished Floor Area: 1,523 sq.ft.

Unfinished Floor Area: 113 sq.ft.



Main Floor Plan

Floor Area: 1,773 sq.ft.

Pixilink

E&O insured up to \$1,000,000 SOLUTIONS

Total sq.ft. is calculated using ANSI - Z765 (unit gross area) 604-639-5434

This floor plan is not suitable for architectural/construction use WWW.PIXILINK.COM