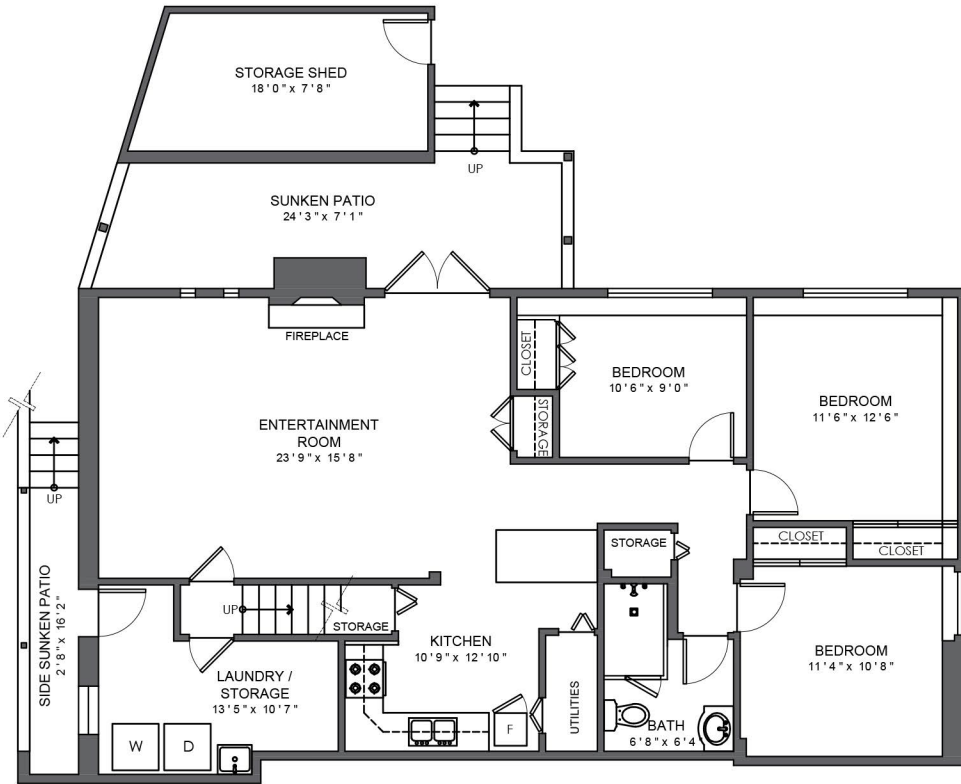
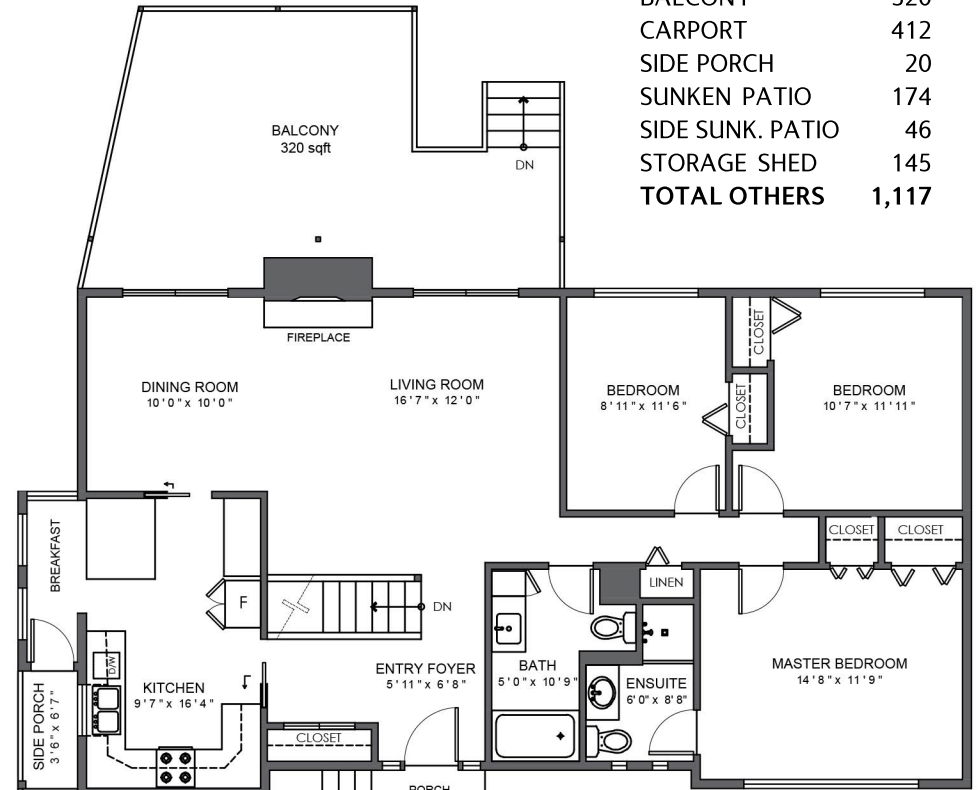


2668 Hardy Crescent, North Vancouver

*FLOOR AREA	(SQFT.)
MAIN FLOOR	1,420
LOWER FLOOR	1,333
LIVING AREA	2,753
BALCONY	320
CARPORT	412
SIDE PORCH	20
SUNKEN PATIO	174
SIDE SUNK. PATIO	46
STORAGE SHED	145
TOTAL OTHERS	1,117



LOWER FLOOR
Ceiling Height: 7'10"



MAIN FLOOR
Ceiling Height: 8'0"