

32 - 8111 160 STREET  
SURREY, BC

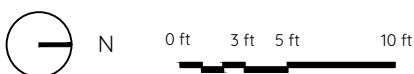
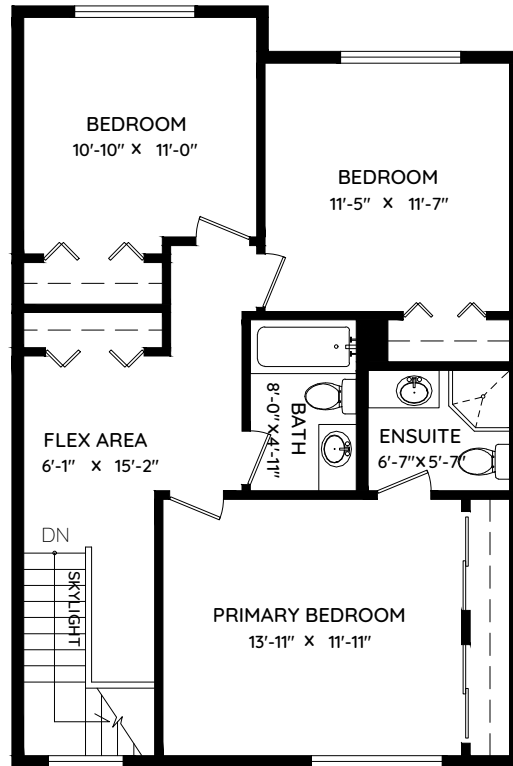
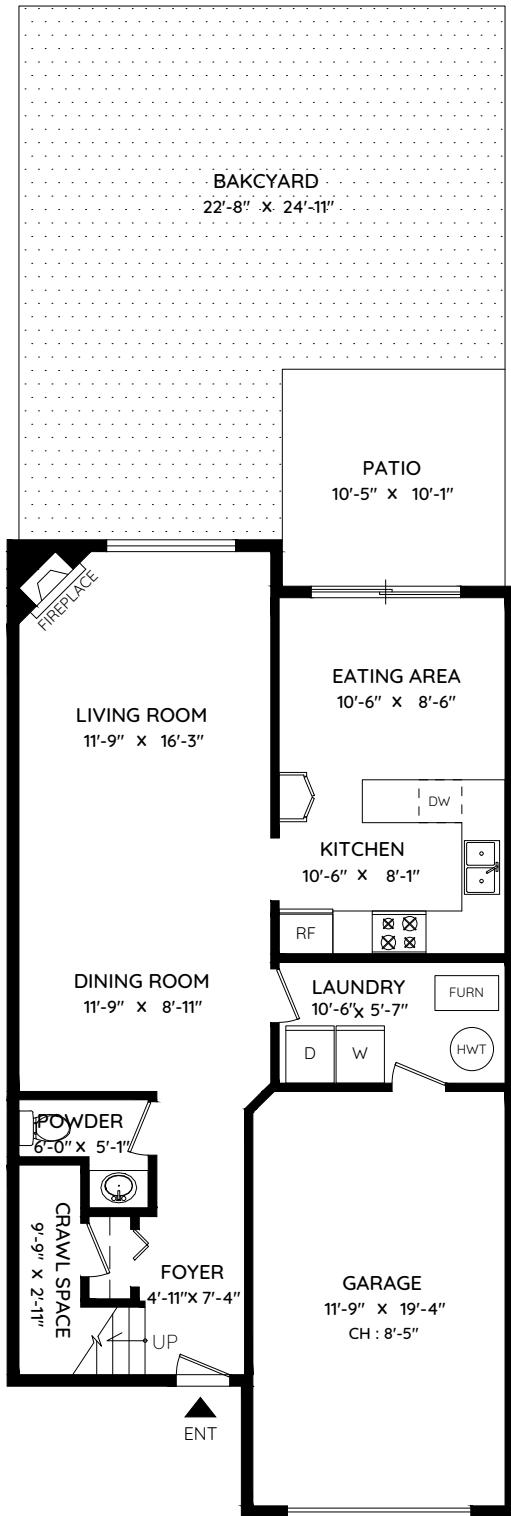


Tazmeen Woodall

604 760 7005

tazmeen@tazmeenwoodall.com

|              |                     |                 |                   |
|--------------|---------------------|-----------------|-------------------|
| MAIN         | 744 SQ.FT.          | GARAGE          | 246 SQ.FT.        |
| UPPER        | 817 SQ.FT.          | PATIO           | 104 SQ.FT.        |
| <b>TOTAL</b> | <b>1,561 SQ.FT.</b> | <b>BACKYARD</b> | <b>481 SQ.FT.</b> |
|              |                     | <b>TOTAL</b>    | <b>831 SQ.FT.</b> |



The floor plan and measurements are approximate, typically within +/- 2%. These are intended strictly for advertising purposes. They may encompass unfinished areas and are not intended for architectural or construction applications. There may be variances in the numbers if there were restrictions on property access or if taking precise measurements at the time of measuring isn't feasible. E&O Insured.

