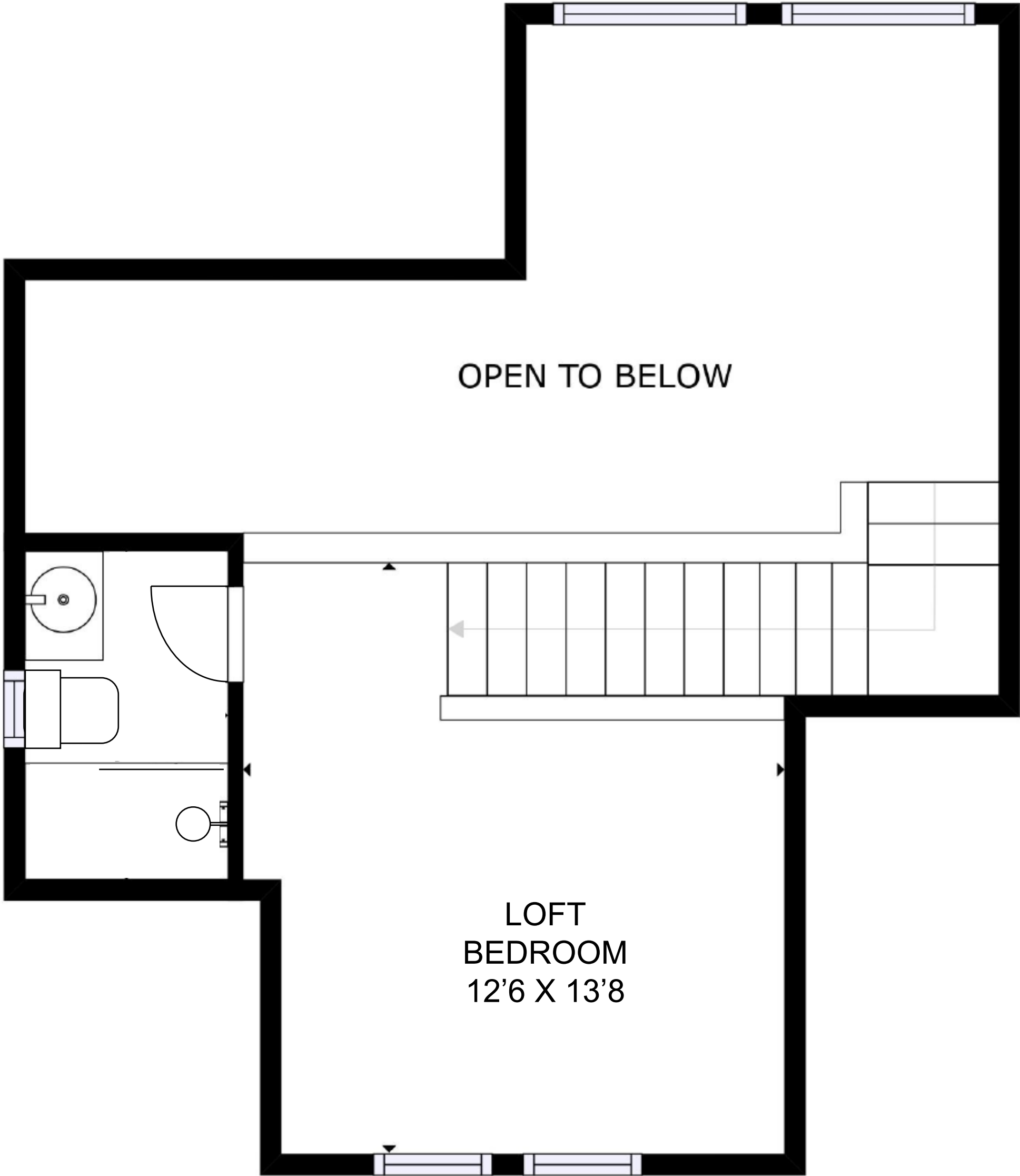
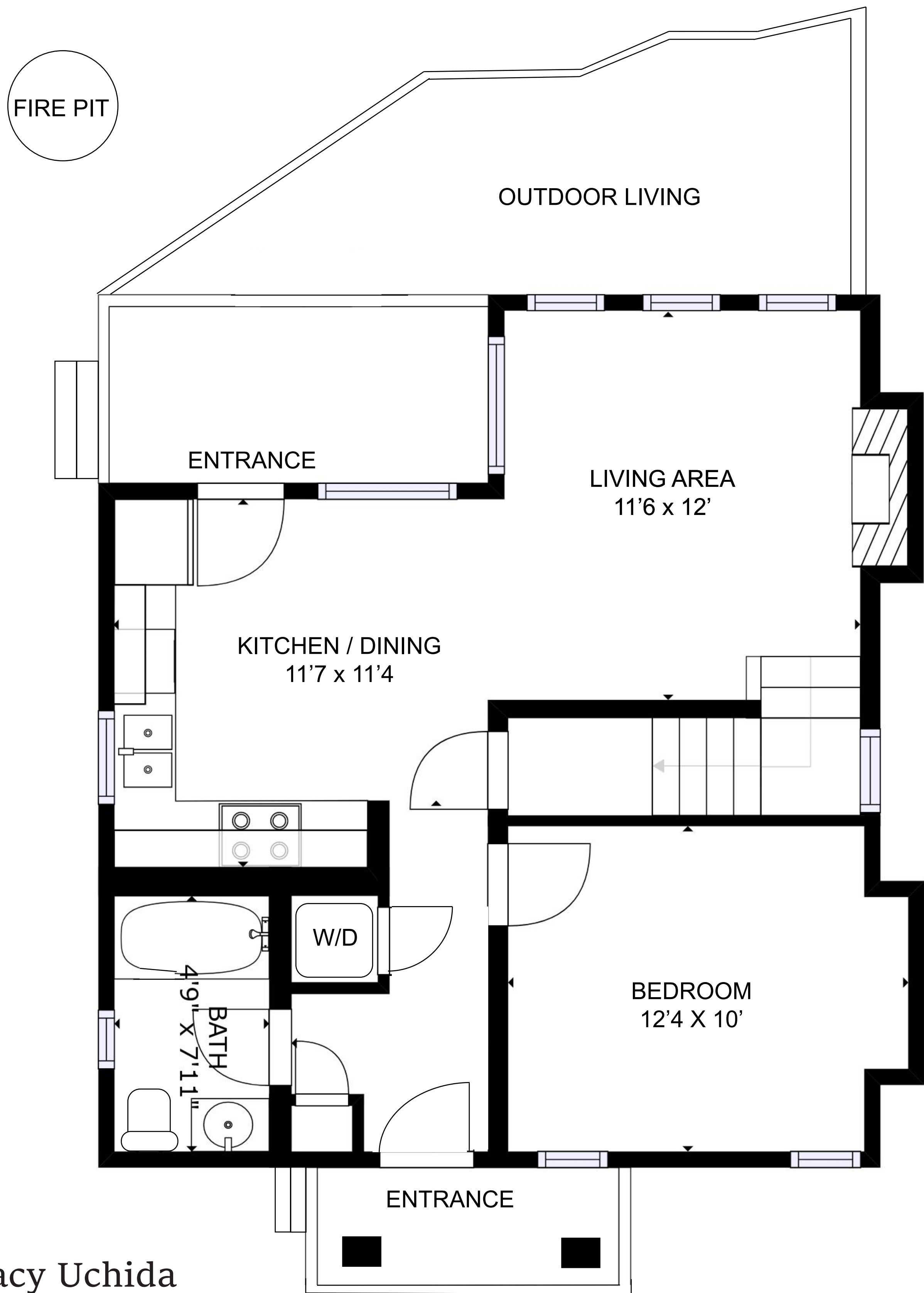


13563 Lee Road  
Pender Harbour  
Main Floor: 5422 sqft  
2nd Level: 238 sqft  
Total: 780 sqft



Tracy Uchida  
Personal Real Estate Corp.  
Blu Realty - MySunshineCoastBC.com

Floor plan is for reference only. The measurements and dimensions are approximate and may not be to scale. Buyer to verify if important.