

154 27th Street E, North Vancouver, B.C.



Lois Marie Sullivan PREC*

778.877.0908 | lifestyle@loismariesullivan.com

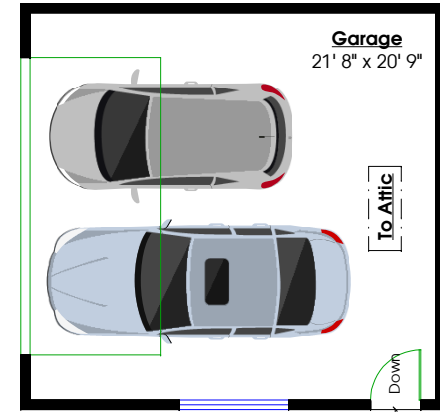
Totals**

Main Level:	991 sq. ft.	Porch:	81 sq. ft.
Upper Level:	877 sq. ft.	Patio:	297 sq. ft.
Lower Level:	615 sq. ft.	Primary Deck:	60 sq. ft.
		Lower Level Entry:	43 sq. ft.
Total:	2,483 sq. ft.	Detached Garage:	493 sq. ft.

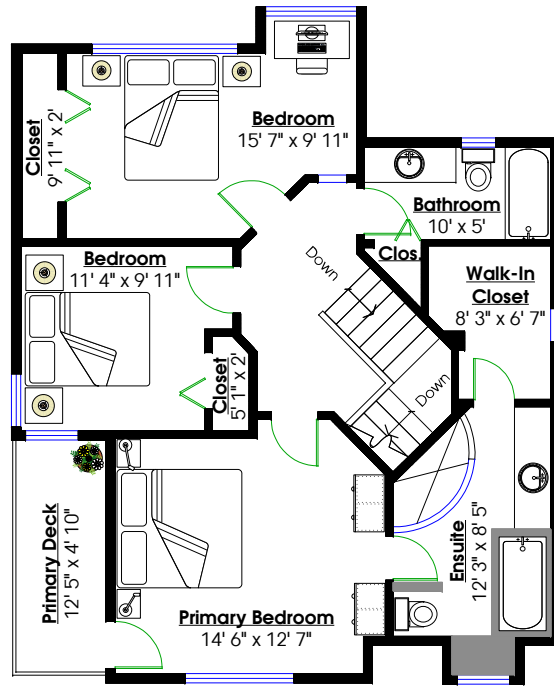
Mechanical:	37 sq. ft.	Total:	974 sq. ft.
Crawl Space:	347 sq. ft.		

Total: 384 sq. ft.

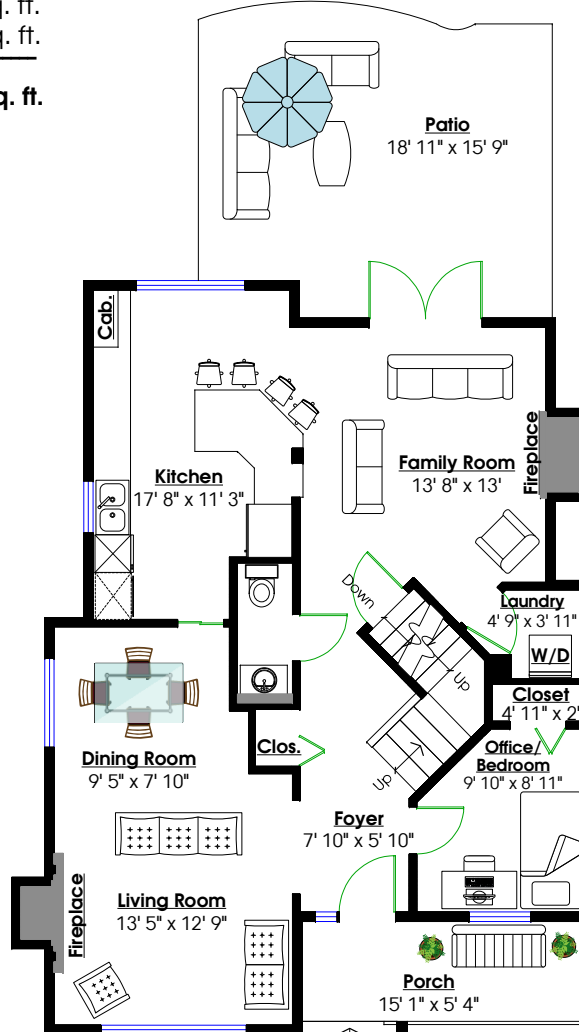
Grand Total: 2,867 sq. ft.



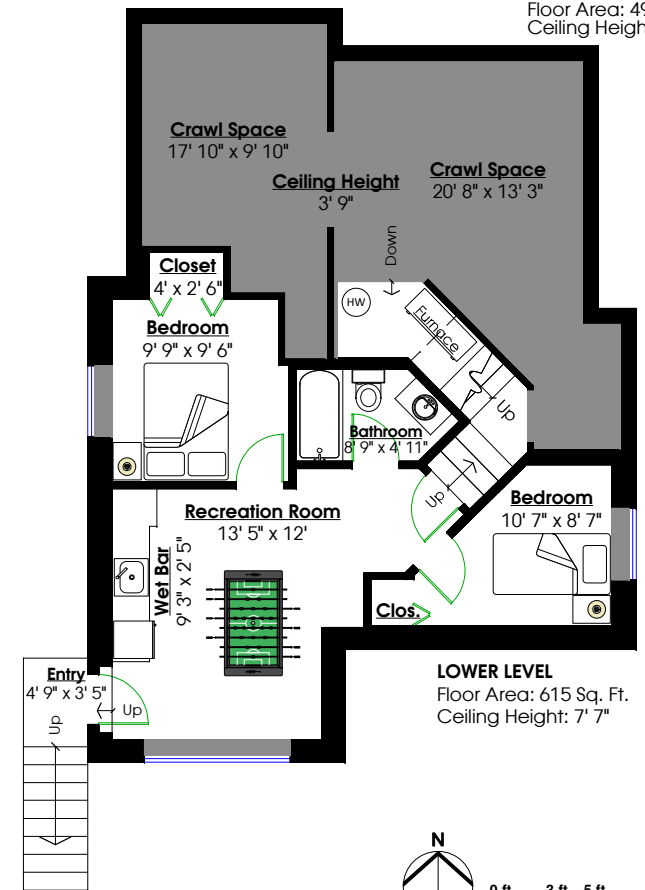
DETACHED GARAGE
Floor Area: 493 Sq. Ft.
Ceiling Height: 8' 1"



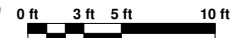
UPPER LEVEL
Floor Area: 877 Sq. Ft.
Ceiling Height: 8'



MAIN LEVEL
Floor Area: 991 Sq. Ft.
Ceiling Height: 8'



LOWER LEVEL
Floor Area: 615 Sq. Ft.
Ceiling Height: 7' 7"



** While all reasonable attempts have been made to ensure accuracy and the square footage and room dimensions are believed to be correct to ANSI Standards, due to the possibility of human error the information cannot be guaranteed. E&O Insured for \$1,000,000
**Includes under-height areas