

655 St. Ives Crescent, North Vancouver, B.C.

Totals**

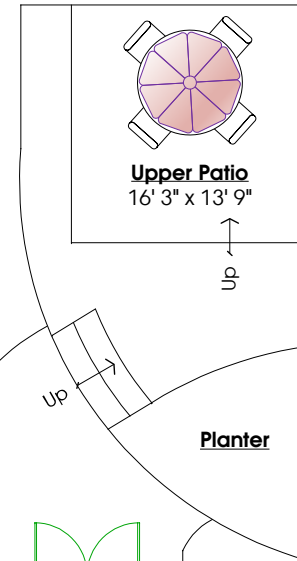
Main Level: 1,599 sq. ft. Garage: 299 sq. ft.
 Shed: 46 sq. ft. Greenhouse: 86 sq. ft.
 Patio: 361 sq. ft. Upper Patio: 238 sq. ft.

Total: 1,030 sq. ft.

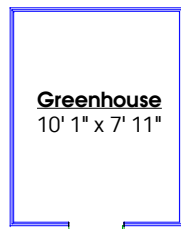


Lois Marie Sullivan PREC*

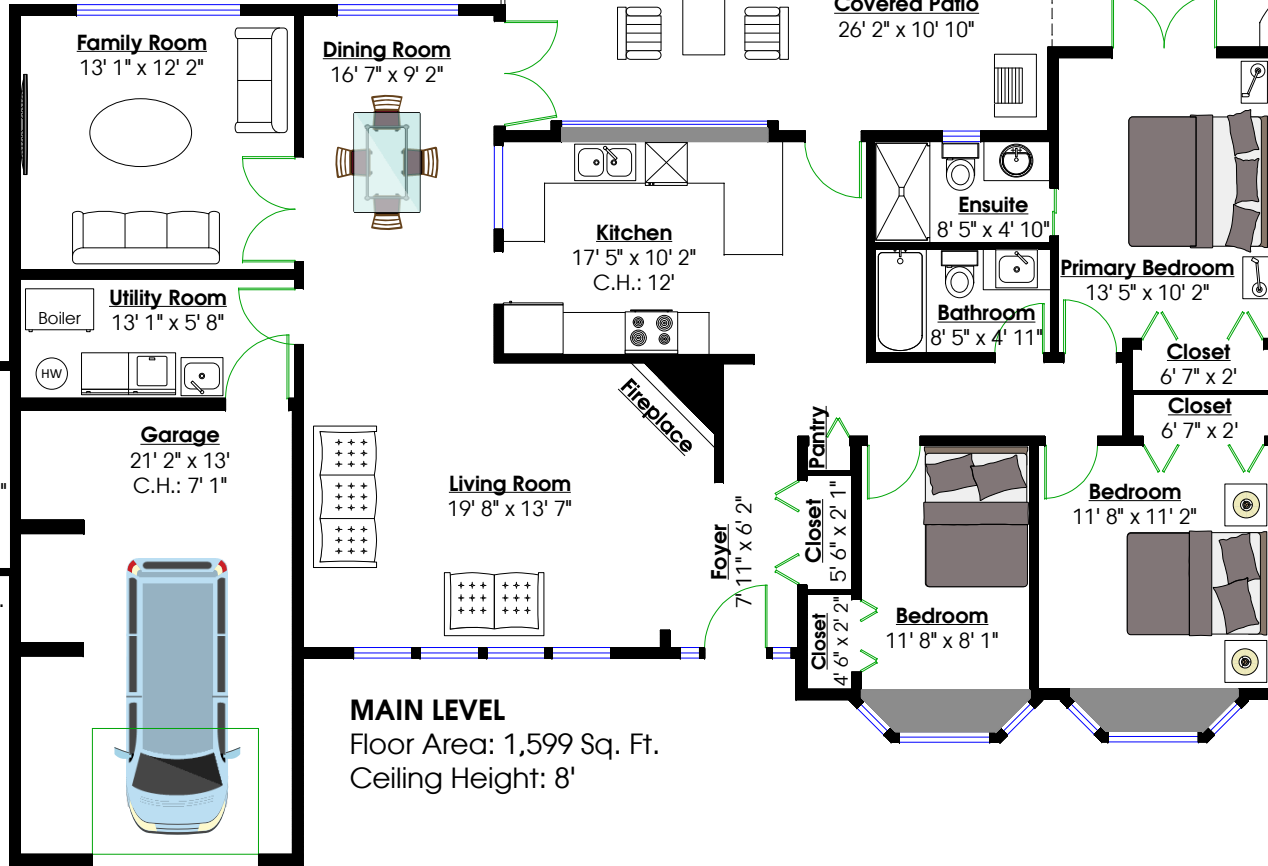
778.877.0908 | lifestyle@loismariesullivan.com



GREENHOUSE
 Floor Area: 86 Sq. Ft.
 Ceiling Height: 7' 3"



Greenhouse
 10' 1" x 7' 11"



MAIN LEVEL
 Floor Area: 1,599 Sq. Ft.
 Ceiling Height: 8'

SHED
 Floor Area: 46 Sq. Ft.
 Ceiling Height: 8'

