

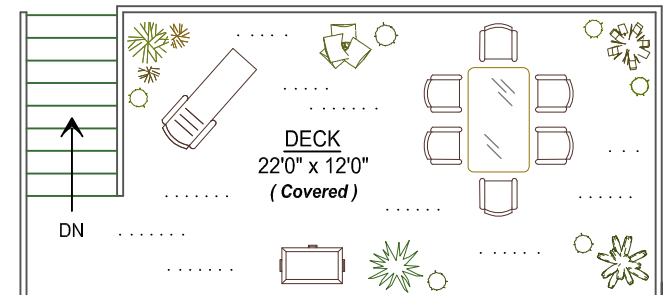
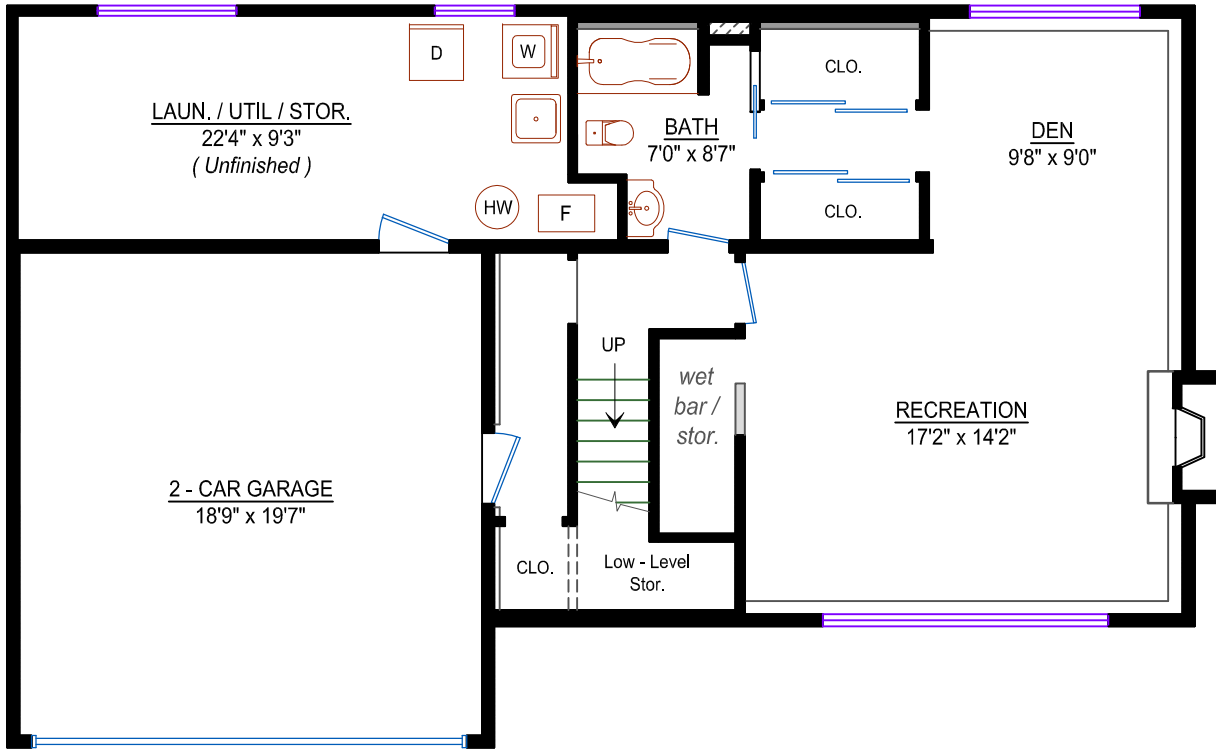
LOIS MARIE SULLIVAN

YOUR HOME LIFESTYLE SPECIALIST

778-877-0908

lifestyle@loismariesullivan.com

www.loismariesullivan.com

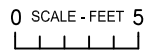


Driveway

LOWER LEVEL

Area: 672 sq. ft.

Area: 212 sq. ft. (*Unfin.*)



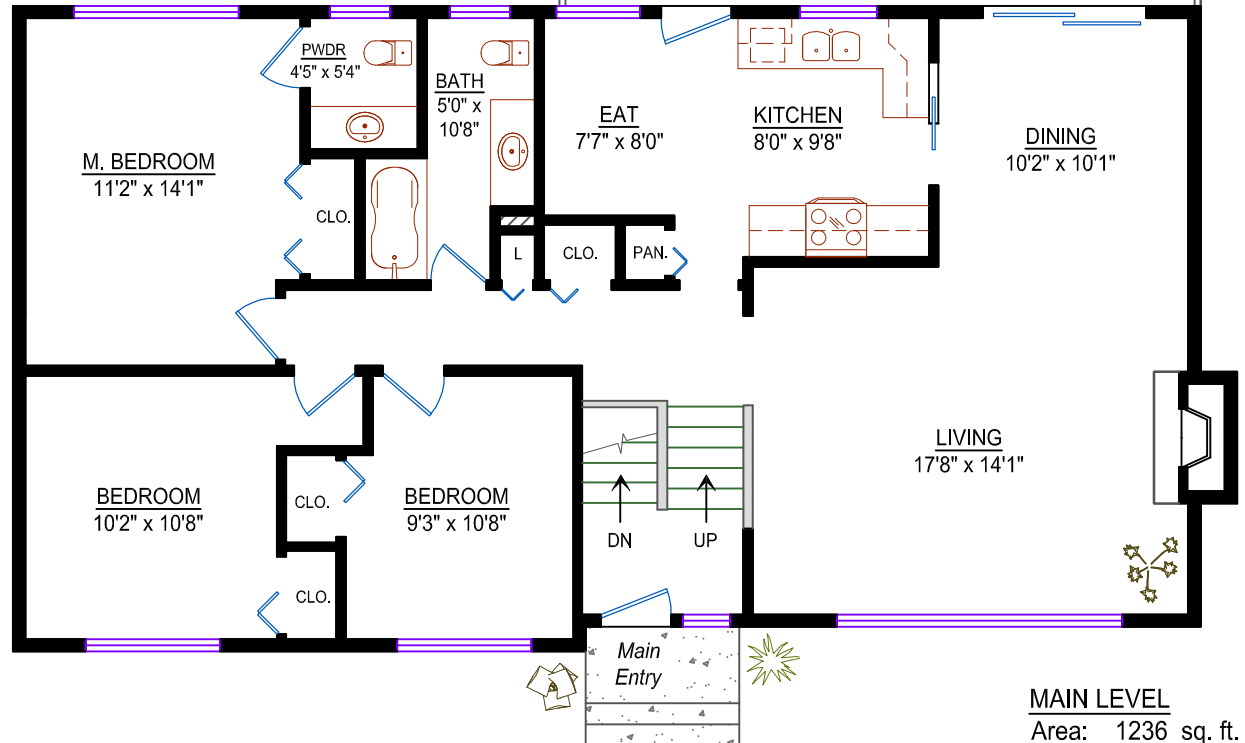
5236 Kincaid Street
Burnaby, BC

Main Level: 1236 sq. ft.
Lower Level: 672 sq. ft.
Total: 1908 sq. ft.
Lower Level: 212 sq. ft. (*Unfinished*)
Grand Total: 2120 sq. ft.

Other Areas: (not included in totals)

Deck: (Covered) 310 sq. ft. (*Sq. ft. Includes Stairs*)
Garage: 389 sq. ft.
Lower Level: 37 sq. ft. (*Low - Level Stor. under Stairwell*)

Design Ideas 4u
Floorplans - Design
info@designideas4u.ca
* room dimensions are approximate *



MAIN LEVEL
Area: 1236 sq. ft.