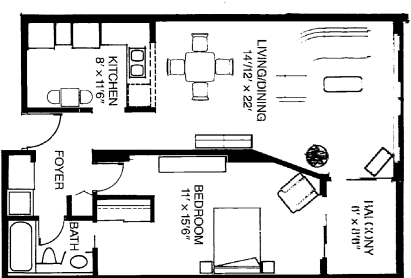


One Bedroom • Two Bedrooms • One Bedroom and Den/Guest Room

The Florence Suite

One Bedroom - Approx 810 sq. ft.
2ND FLOOR TO 7TH FLOOR



General Features:

- 36 oz. carpeting and wood baseboards
- Vertical louvered blinds
- Floor to ceiling 8 foot patio doors
- Electric heat with individual room controls
- Washer and dryer hook-up in every suite
- Private balconies with access from living room and bedroom
- Mirrored closet doors in entry, master bedroom and ensuite
- Each residential floor has its own designer decorated identity

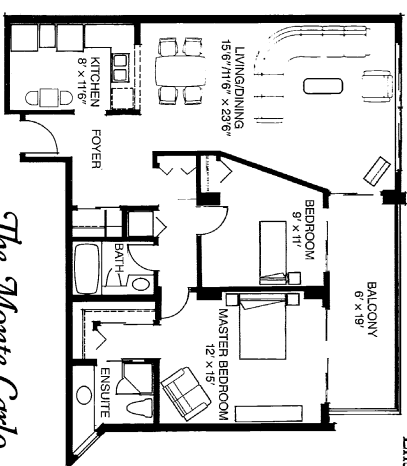
Kitchen Features:

- Eating area
- Almond oak cabinets with pass through counter
- Imported ceramic tile floor
- 30 inch self-cleaning range
- 17 cu. ft. refrigerator
- Four button dishwasher

Bathroom Features:

- Low profile acrylic bathtub with tiled bath area
- Imported ceramic tile floor
- Brass accent fixtures
- Counter to ceiling mirrors
- Ensuites include glass enclosed corner shower

Some floor plans and features may vary as shown.



The Monte Carlo Suite

Two Bedrooms - Approx. 1090 sq. ft.
1ST FLOOR TO 21ST FLOOR



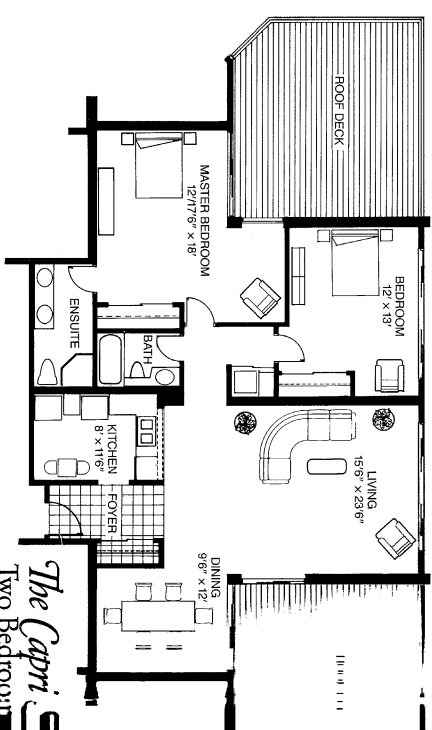
The Venice Suite

One Bedroom and Den/Guest Room
Approx. 920 sq. ft.
8TH FLOOR TO 21ST FLOOR



The Paris Suite

One Bedroom and Den/Guest Room
Approx. 940 sq. ft.
22ND FLOOR



The Capri Suite

Two Bedrooms
22ND FLOOR

General Features:

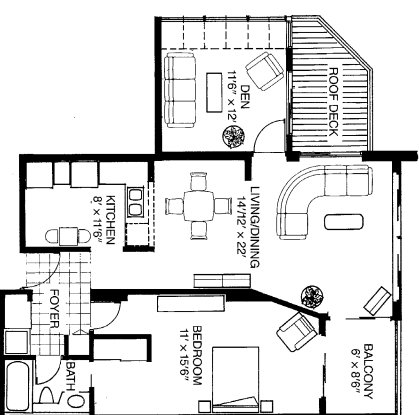
- 36 oz. carpeting and wood baseboards
- Vertical louvered blinds
- Floor to ceiling 8 foot patio doors
- Electric heat with individual room controls
- 9 ft. 6 in. high ceilings
- Mirrored closet doors in entry, master bedroom and ensuite
- Large private decks
- Washer and dryer hook-up in every suite
- Most suites feature skylights
- Marble entrance
- Each residential floor has its own designer decorated identity

Kitchen Features:

- Eating area
- Almond oak cabinets with pass through counter
- Imported ceramic tile floor
- 30 inch self-cleaning 17 cu. ft. refrigerator
- 18 cu. ft. refrigerator
- 6 button dishwasher
- Built-in microwave
- Garburator
- 190°F hot water dispenser

Bathroom Features:

- Low profile acrylic bath with tiled bath area
- Imported ceramic tile floor
- Brass accent fixtures
- Counter to ceiling mirrors
- Double size step-up sp. tubs (as shown)
- Large ensuites include enclosed corner shower some with skylights



The Versailles Suite

One Bedroom and Den/Guest Room
Approx. 970 sq. ft.
23RD FLOOR

The top three floors are premium suites - One Bedroom