

265 West Windsor Road, North Vancouver, B.C.



Lois Maire Sullivan PREC

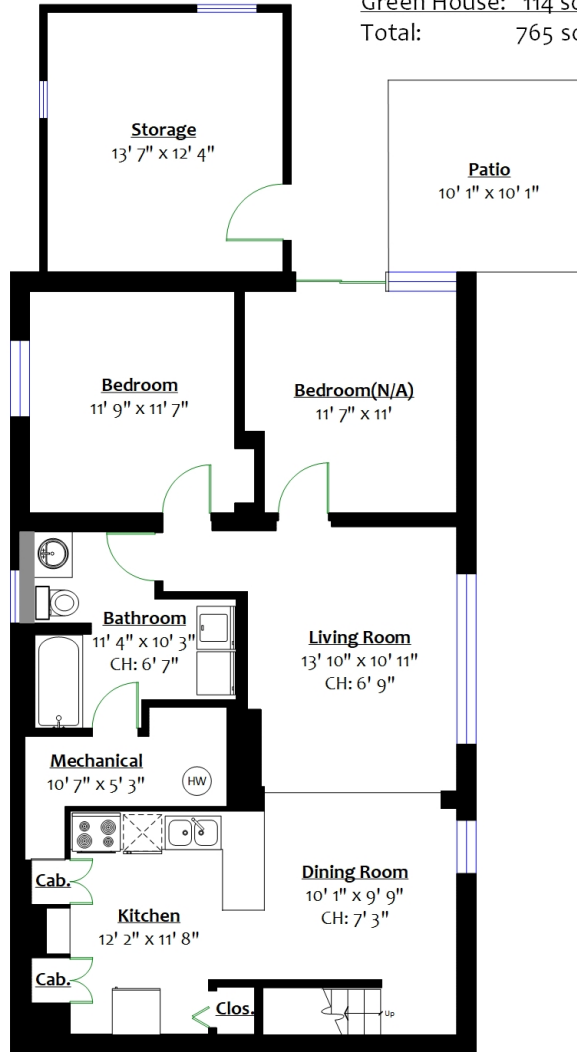
778.877.0908

lifestyle@loismariesullivan.com

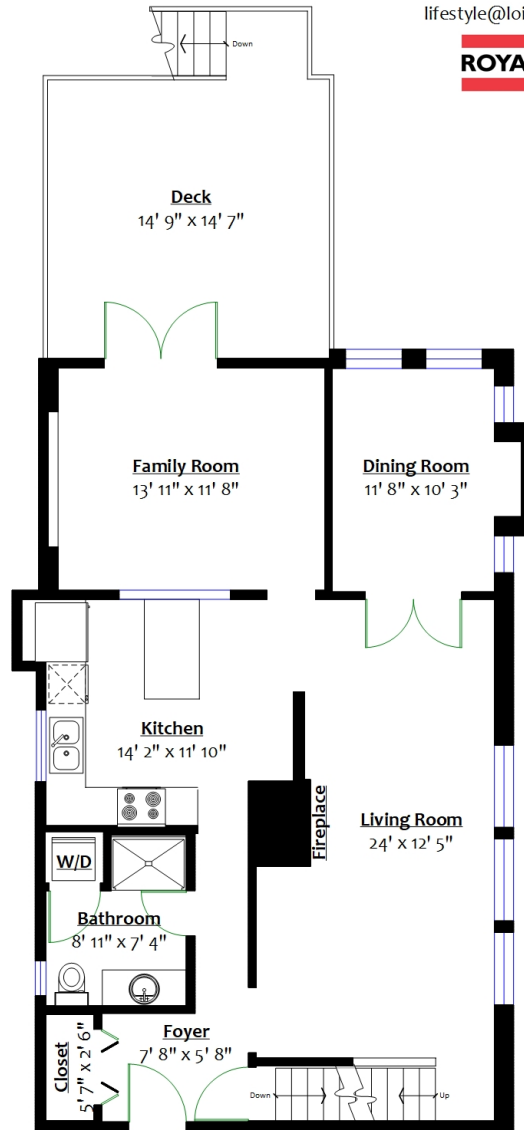


Totals**

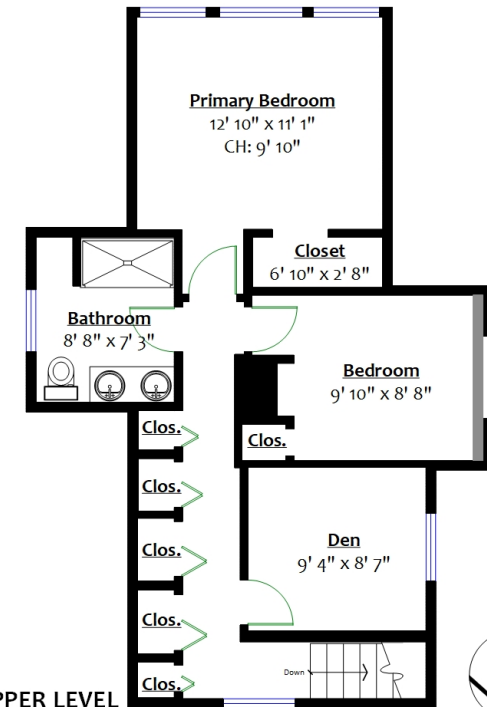
Main Level:	1,020 sq. ft.	Storage:	183 sq. ft.
Upper Level:	637 sq. ft.	Deck:	240 sq. ft.
Lower Level:	992 sq. ft.	Side Deck:	127 sq. ft.
Total:	2,649 sq. ft.	Patio:	101 sq. ft.
		Green House:	114 sq. ft.
		Total:	765 sq. ft.



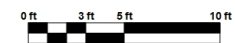
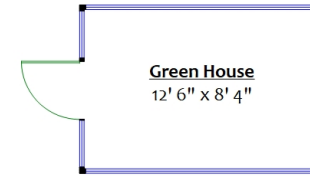
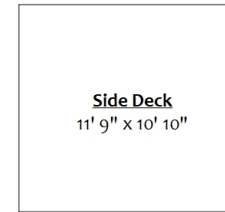
LOWER LEVEL
Floor Area: 992 Sq. Ft.



MAIN LEVEL
Floor Area: 1,020 Sq. Ft.
Ceiling Height: 8'



UPPER LEVEL
Floor Area: 637 Sq. Ft.
Ceiling Height: 8'



** While all reasonable attempts have been made to ensure accuracy and the square footage and room dimensions are believed to be correct to ANSI Standards, due to the possibility of human error the information cannot be guaranteed. E&O Insured for \$1,000,000