

2254 East 46 Avenue, Vancouver, B.C.



Lois Marie Sullivan PREC

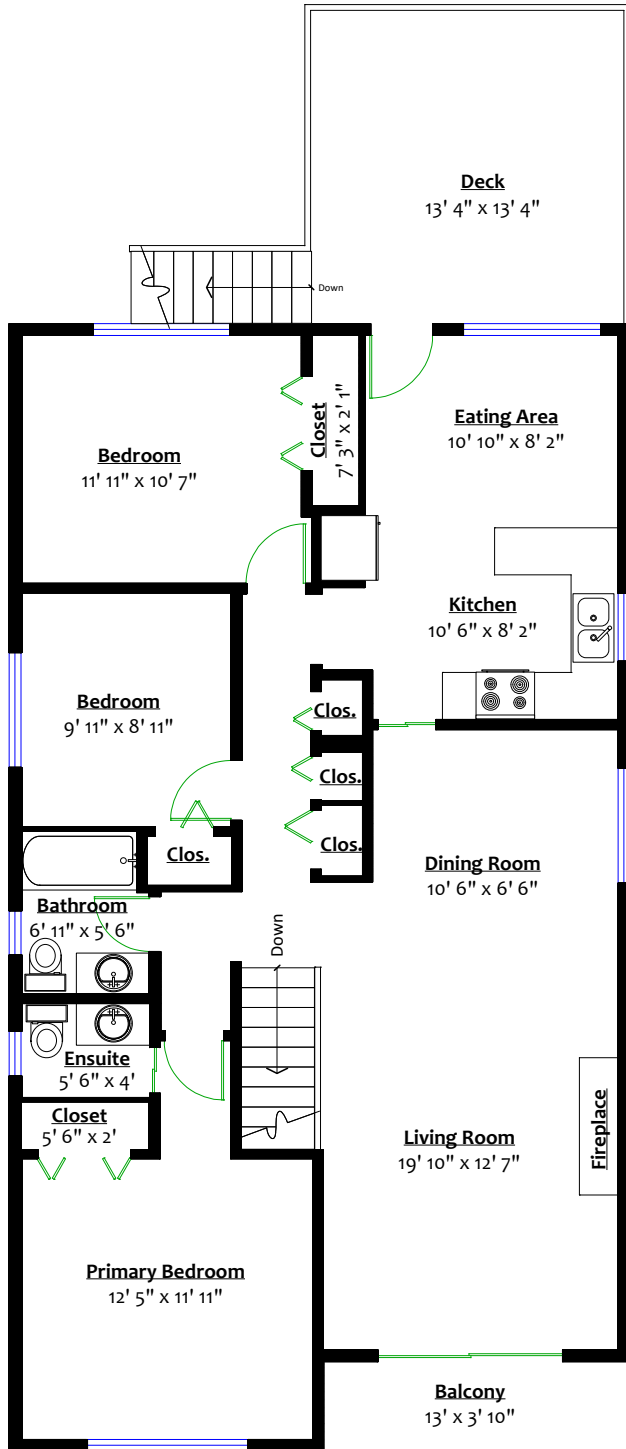
778.877.0908

lifestyle@loismariesullivan.com

ROYAL LEPAGE

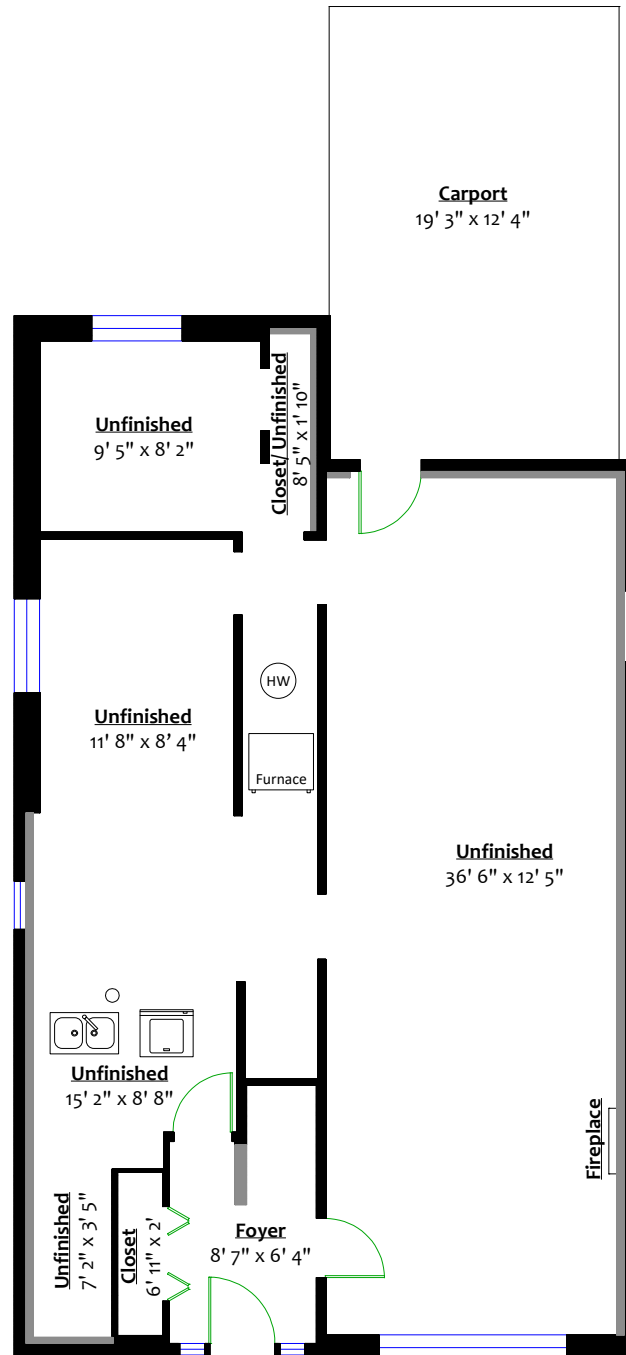
Totals**

Main Level:	1,216 sq. ft.	Carport:	238 sq. ft.
Lower Level:	91 sq. ft.	Deck:	177 sq. ft.
Total:	1,307 sq. ft.	Balcony:	49 sq. ft.
Unfinished:	1,000 sq. ft.	Total:	464 sq. ft.
Grand Total:	2,307 sq. ft.		



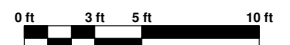
MAIN LEVEL

Floor Area: 1,216 Sq. Ft.
Ceiling Height: 8'



LOWER LEVEL

Floor Area: 91 Sq. Ft.
Ceiling Height: 7' 8"



** While all reasonable attempts have been made to ensure accuracy and the square footage and room dimensions are believed to be correct to ANSI Standards, due to the possibility of human error the information cannot be guaranteed. E&O Insured for \$1,000,000