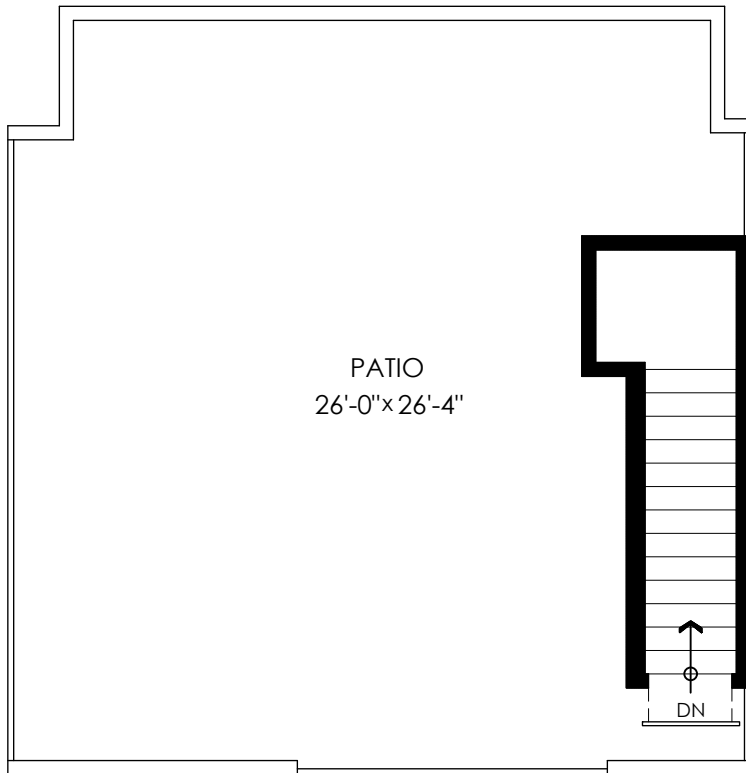


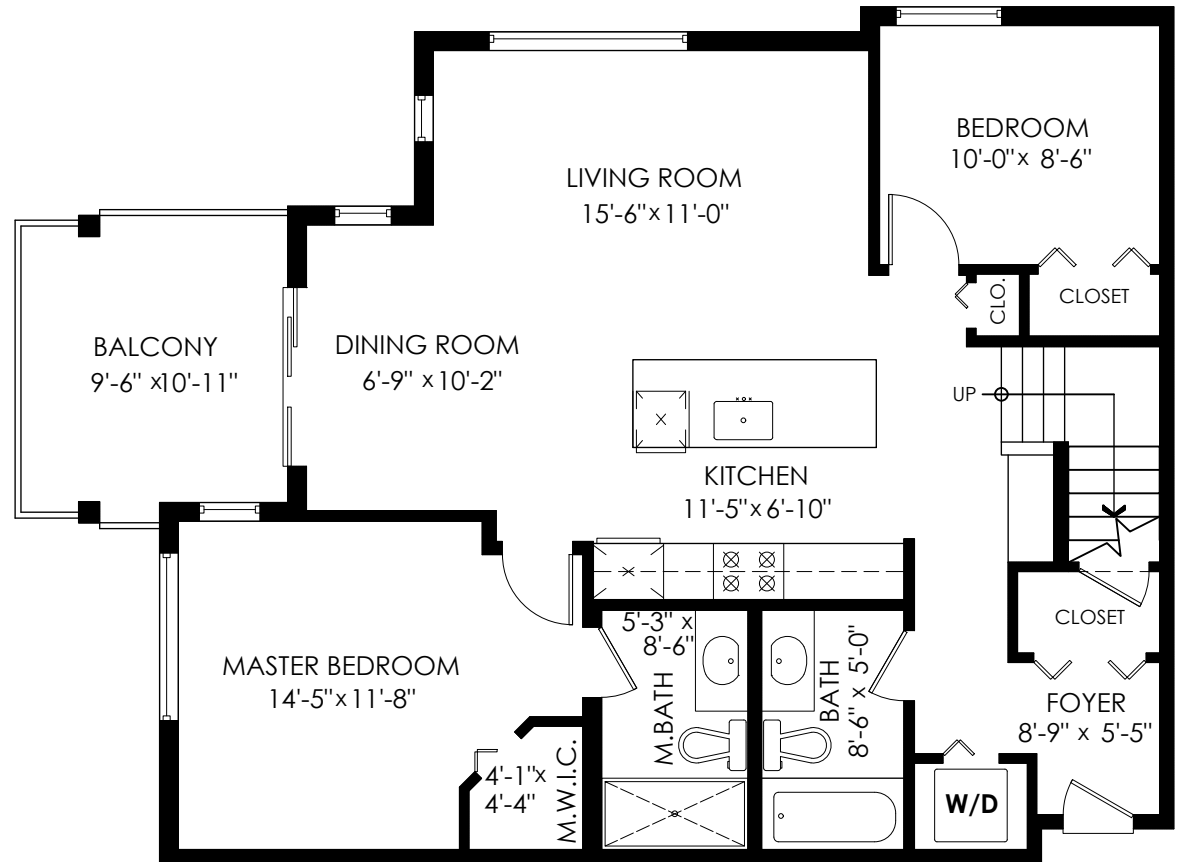
Main Floor: 967 sq.ft.
 Entry Floor: 79 sq.ft.
Total: 1,046 sq.ft.

Roof Top Patio: 598 sq.ft.
 Balcony: 98 sq.ft.
Total Extras: 696 sq.ft.



Entry Floor Plan

Floor Area: 79 sq.ft.
 Roof Top Patio: 598 sq.ft.



Main Floor Plan

Floor Area: 967 sq.ft.
 Ceiling Height: 8'-11"